



# JUVENILE DETENTION PROFILE SURVEY

FOURTH QUARTER CALENDAR YEAR 2013  
SURVEY RESULTS



## EXPLANATION OF RESULTS

The following pages contain the Juvenile Detention Profile Survey (JDPS) results for the Fourth Quarter of Calendar Year 2013. Page 2 contains totals for major categories such as the average daily population (ADP), highest one-day population, gender, and age range of detained minors. Page 3 contains information regarding counties' ADP and rated capacity (RC) breakouts, and page 4 contains information about a wide range of juvenile detention facility issues, including mental health needs, crowding, number of bookings, and average length of stay.

***Pages 5, 6, and 7 contain trend information compiled from Calendar Year 2008 through Calendar Year 2013. The trend data is separated into Juvenile Hall related data and Camp related data.***

Please keep the following in mind when reviewing this information:

- For overall capacity, crowding (highest one-day population – the count of minors in detention on the day of each county's highest population) and ADP (the average daily detention population for the reporting period), we have complete data from all jurisdictions in the state that operate juvenile detention facilities.
- Each jurisdiction provides us with the average population, computed across all the days in the month, for each of the three months in the quarter. The weighted average across the three months is then computed for each jurisdiction (with the monthly averages weighted by the number of days in the month). The jurisdictions' ADPs are then combined to produce the state's total ADP.
- For some variables (other than ADP), we did not receive complete data from all jurisdictions. In such instances, we used statistical procedures to estimate the statewide total.
- Felony/misdemeanor, gender counts, and age-range breakouts are based upon a one-day snapshot (on the 15<sup>th</sup> day of the final month of the quarter). These values are used to determine the percentage of the population in each felony/misdemeanor, gender, and age-range category. The percentages are then applied to the total ADP to project the expected ADP in each of the felony/misdemeanor, gender, and age-range categories.
- In addition to the population breakdowns for juvenile halls and camps, the report contains like information for youth who were part of non-facility based, alternative to detention programs. Youth in that category are listed under "Other Detention." Other detention includes home supervision with and without electronic monitoring, day reporting centers, work programs, and other alternatives to detention **for which youth are credited with custody time.**
- ***Please note:***
  - In early 2011, eight regional trainings were held for county reporters and contributors to the JDPS. When interpreting the JDPS results from the second quarter of 2011 forward, please consider that the clarification of variable definitions and calculations which occurred at those trainings may explain some unanticipated differences when compared to prior quarters.
  - Each quarter, every county with juvenile detention facilities submits their data to the Board of State and Community Corrections (BSCC). While we make every effort to review data for accuracy, including contacting individual counties for clarification, the BSCC cannot be responsible for data reporting errors made at the county level.

**Board of State and Community Corrections  
 Juvenile Detention Profile Survey - 4th Quarter, 2013  
 Overall Capacity, Population and ADP**

<b>Overall Capacity and Population</b>							
	<b>JUVENILE HALL</b>		<b>CAMPS</b>		<b>OTHER</b>	<b>TOTAL</b>	
<b>ADP</b>	3,815.4		2,436.7		1,576.6	7,828.7	
<b>Percent of Total</b>	48.7%		31.1%		20.1%	100.0%	
<b>RC *</b>	8,212.2		4,918.8			13,131.1	
<b>High One Day</b>	4,386.0		2,571.0			6,957.0	

<b>Gender by Detention Type</b>								
	<b>JUVENILE HALL</b>		<b>CAMPS</b>		<b>OTHER</b>		<b>TOTAL</b>	
<b>GENDER</b>	<b>ADP</b>	<b>%</b>	<b>ADP</b>	<b>%</b>	<b>ADP</b>	<b>%</b>	<b>ADP</b>	<b>%</b>
<b>Male</b>	3,228.1	84.6%	2,217.7	91.0%	1,313.1	83.3%	6,758.9	86.3%
<b>Female</b>	587.3	15.4%	219.0	9.0%	263.5	16.7%	1,069.8	13.7%
<b>TOTAL</b>	3,815.4	100.0%	2,436.7	100.0%	1,576.6	100.0%	7,828.7	100.0%

<b>Disposition by Gender for Juvenile Halls</b>							
	<b>MALE</b>		<b>FEMALE</b>		<b>TOTAL</b>		
<b>DISPOSITION</b>	<b>Number</b>	<b>%</b>	<b>Number</b>	<b>%</b>	<b>Number</b>	<b>%</b>	
<b>Pre-Disposition</b>	1,684.0	52.2%	307.3	52.3%	1,991.3	52.2%	
<b>Post-Disposition</b>	1,544.1	47.8%	280.1	47.7%	1,824.2	47.8%	
<b>TOTAL</b>	3,228.1	100.0%	587.3	100.0%	3,815.4	100.0%	

<b>Disposition by Gender for Other Detention</b>							
	<b>MALE</b>		<b>FEMALE</b>		<b>TOTAL</b>		
<b>DISPOSITION</b>	<b>Number</b>	<b>%</b>	<b>Number</b>	<b>%</b>	<b>Number</b>	<b>%</b>	
<b>Pre-Disposition</b>	530.0	40.4%	109.3	41.5%	639.3	40.6%	
<b>Post-Disposition</b>	783.1	59.6%	154.2	58.5%	937.2	59.4%	
<b>TOTAL</b>	1,313.1	100.0%	263.5	100.0%	1,576.6	100.0%	

<b>Age Range by Type of Detention (One-Day Snapshot)</b>							
	<b>JUVENILE HALL</b>		<b>CAMPS</b>		<b>TOTAL</b>		
<b>AGE RANGES</b>	<b>Number</b>	<b>%</b>	<b>Number</b>	<b>%</b>	<b>Number</b>	<b>%</b>	
<b>Under 12</b>	5.0	0.1%	0.0	0.0%	5.0	0.1%	
<b>12 to 14</b>	401.0	10.3%	129.0	5.2%	530.0	8.3%	
<b>15 to 17</b>	3,043.0	78.5%	1,801.0	72.8%	4,844.0	76.3%	
<b>18 Over</b>	426.0	11.0%	543.0	22.0%	969.0	15.3%	
<b>TOTAL</b>	3,875.0	100.0%	2,473.0	100.0%	6,348.0	100.0%	

\* RC is Rated Capacity which is the number of beds that comply with standards set forth in Title 24, California Code of Regulations.

**County Breakout Report - 4th Quarter, 2013  
Facilities and Alternative Detention**

	County	Rated Capacity	Facilities Detention	Other Detention	ADP	Percent of Total	Cumulative Percent
1	Los Angeles	3,678	1,684.5	467.82	2,152.3	27.49%	27.49%
2	San Diego	1,105	567.8	163.28	731.1	9.34%	36.83%
3	Orange	743	415.7	58.00	473.7	6.05%	42.88%
4	Fresno	450	291.3	129.67	421.0	5.38%	48.26%
5	Kern	478	335.2	1.59	336.8	4.30%	52.56%
6	Santa Clara	474	196.3	126.73	323.0	4.13%	56.69%
7	Sacramento	444	178.7	138.33	317.0	4.05%	60.74%
8	Riverside	538	244.9	41.19	286.1	3.65%	64.39%
9	San Bernardino	450	259.0	0.00	259.0	3.31%	67.70%
10	Tulare	330	150.3	87.30	237.6	3.03%	70.73%
11	Contra Costa	390	225.9	0.00	225.9	2.89%	73.62%
12	San Mateo	245	109.9	87.92	197.8	2.53%	76.15%
13	Alameda	463	197.3	0.00	197.3	2.52%	78.67%
14	Monterey	190	115.3	22.04	137.4	1.75%	80.42%
15	Merced	120	55.0	72.85	127.9	1.63%	82.06%
16	Sonoma	164	87.9	39.82	127.7	1.63%	83.69%
17	Stanislaus	218	102.2	21.94	124.1	1.59%	85.27%
18	Santa Barbara	245	110.9	0.00	110.9	1.42%	86.69%
19	San Joaquin	224	108.4	0.00	108.4	1.38%	88.07%
20	Solano	148	78.4	16.66	95.0	1.21%	89.29%
21	Ventura	420	92.6	0.00	92.6	1.18%	90.47%
22	San Francisco	234	76.7	0.00	76.7	0.98%	91.45%
23	Madera	70	56.8	15.42	72.3	0.92%	92.37%
24	Kings	85	53.7	4.99	58.7	0.75%	93.12%
25	Yolo	90	26.6	26.62	53.2	0.68%	93.80%
26	Yuba	120	51.9	0.00	51.9	0.66%	94.46%
27	El Dorado	80	34.0	9.63	43.7	0.56%	95.02%
28	Shasta	56	26.7	15.35	42.0	0.54%	95.56%
29	Butte	80	33.7	1.67	35.4	0.45%	96.01%
30	Del Norte	62	28.9	0.00	28.9	0.37%	96.38%
31	Humboldt	44	24.9	2.76	27.7	0.35%	96.73%
32	Napa	50	23.6	0.00	23.6	0.30%	97.03%
33	San Luis Obispo	45	23.1	0.00	23.1	0.29%	97.33%
34	Nevada	60	13.7	8.33	22.0	0.28%	97.61%
35	Lake	30	16.3	5.34	21.7	0.28%	97.89%
36	Placer	78	20.1	0.00	20.1	0.26%	98.14%
37	Santa Cruz	42	18.8	0.00	18.8	0.24%	98.38%
38	Glenn	22	17.6	0.67	18.2	0.23%	98.62%
39	Mendocino	43	17.9	0.00	17.9	0.23%	98.85%
40	Imperial	72	15.0	0.00	15.0	0.19%	99.04%
41	Lassen	40	9.7	4.99	14.7	0.19%	99.23%
42	Tehama	60	13.3	0.00	13.3	0.17%	99.40%
43	San Benito	20	13.0	0.00	13.0	0.17%	99.56%
44	Marin	40	5.9	4.30	10.2	0.13%	99.69%
45	Siskiyou	40	9.0	0.00	9.0	0.11%	99.81%
46	Trinity	28	7.7	0.00	7.7	0.10%	99.90%
47	Inyo	14	5.1	0.00	5.1	0.07%	99.97%
48	Mariposa	4	1.0	0.67	1.7	0.02%	99.99%
49	Tuolumne	0	0.0	0.66	0.7	0.01%	100.00%
50	Mono	4	0.0	0.00	0.0	0.00%	100.00%
		<b>13,131</b>	<b>6,252.1</b>	<b>1,576.6</b>	<b>7,828.7</b>	<b>100.00%</b>	

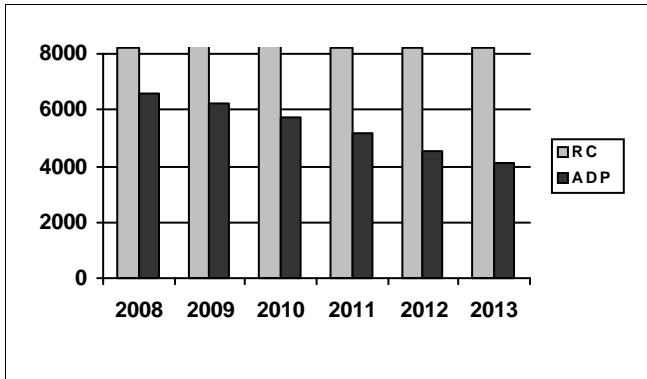
\*ADP on County Breakout Report may not equal ADP on other Summary Reports due to rounding

## Juvenile Detention Profile Survey

4th Quarter Report 2013	Average Daily Population									
	Rated Capacity	One Day Snapshot				Average Daily Population				
		Misdemeanor		Felony		Pre-Disposition		Post-Disposition		Total ADP
	Male	Female	Male	Female	Male	Female	Male	Female		
<b>Juvenile Halls</b>	8,212.2	13.1%	3.9%	28.7%	3.5%	1,684.0	307.3	1,544.1	280.1	3,815.4
<b>Camps / Ranches</b>	4,918.8	6.7%	1.0%	21.9%	1.9%			2,217.7	219.0	2,436.7
<b>Other Juveniles in the System</b>		<b>Male</b>	<b>Female</b>	<b>Male</b>	<b>Female</b>	<b>Male</b>	<b>Female</b>	<b>Male</b>	<b>Female</b>	<b>Total ADP</b>
Juveniles on home supervision with electronic monitoring		3.3%	1.0%	5.6%	1.0%	356.7	70.9	462.6	90.6	980.8
Juveniles on home supervision without electronic monitoring		1.5%	0.5%	2.4%	0.4%	171.3	37.4	170.2	37.2	416.1
Juveniles alternative confinement programs		0.8%	0.6%	1.8%	0.1%	2.0	1.0	150.3	26.4	179.7
<b>Grand Totals</b>		<b>25.5%</b>	<b>7.0%</b>	<b>60.5%</b>	<b>7.1%</b>	<b>2,214.0</b>	<b>416.6</b>	<b>4,544.9</b>	<b>653.2</b>	<b>7,828.7</b>
<b>Mental Health Snapshot</b>										
Number of open mental health cases this day									3,664.2	
Number of juveniles receiving psychotropic medication									1,420.1	
<b>Crowding</b>										
Average daily population of juveniles in other jurisdictions DUE TO LACK OF SPACE									0.0	
Number of juveniles released early DUE TO LACK OF SPACE									0.0	
Average number of days that one or more facilities in a county exceeded the Rated Capacity									3.0	
<b>Average Bookings Per Month</b>										
Number of Juvenile Hall bookings/admissions									4,478.7	
Number of bookings for weapon-related offenses									284.6	
Number of 601 bookings									21.0	
Number of 777 bookings									957.1	
Number of direct file {WIC 602(b) and 707(d)} bookings									43.4	
<b>Final Month of the Quarter (One-Day Snapshot)</b>										
Detained for 707b Offense									786.0	
Awaiting placement									351.0	
Awaiting transport to a camp									196.0	
Awaiting transfer to Youth Authority									62.0	
Court commitments to juvenile hall (Ricardo M)									508.0	
Found unfit per 707.01 WIC									66.0	
Direct files to Adult Court-602(b) and 707(d) WIC									331.0	
Hospitalized outside detention facility for MEDICAL CARE									8.0	
Hospitalized outside detention facility for MENTAL HEALTH CARE									1.0	
Believed to be criminal illegal aliens									123.7	
<b>Average Length of Stay</b>										
Juvenile Hall (all releases)									25.1	
Juvenile Hall to Camps									30.6	
Juvenile Hall to other out-of-home placements (i.e. group homes or foster homes)									41.4	
Juvenile Hall who were found unfit (per juvenile court)									354.3	
Juvenile Hall who were direct filings to adult court									293.1	
Camps (all releases)									137.3	
<b>Cumulative Total for the Quarter</b>										
<b>Detention Behavior</b>					<b>Juvenile Halls</b>		<b>Camps / Ranches</b>		<b>Other Detention</b>	
Assaults by juveniles on staff					34.0		13.0		0.0	
Escapes					2.0		29.0		13.0	
Suicide Attempts					44.0		3.0		0.0	
Suicides					0.0		0.0		0.0	

## Fourth Quarter Report, 2013 - Juvenile Hall Data

### Rated Capacity RC and ADP for Juvenile Halls

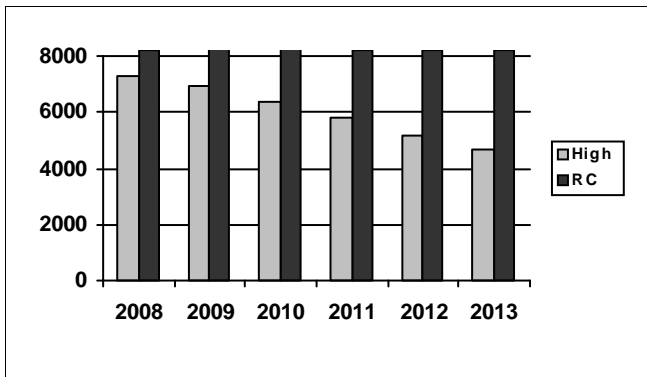


After a small increase in Juvenile Hall ADP in the Second Quarter of 2013, the annual average ADP has continued to steadily decline. The annual average ADP has dropped by 2,511 since 2008 and a 39.3% decrease since 1999.

Summary of Juvenile Hall ADP				
2008	2009	2010	2011	2012
6,614	6,197	5,721	5,137	4,546

2013 Summary of Juvenile Hall ADP				
Q1	Q2	Q3	Q4	Average
4,209	4,413	3,979	3,815	4,103

### Juvenile Hall Highest One-Day Population and RC

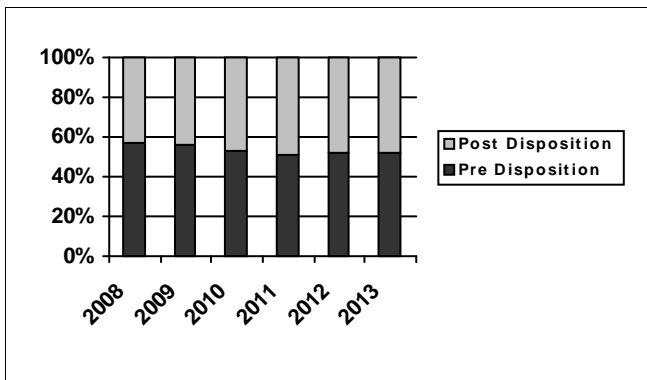


The 2013 average highest one day population is the lowest reported since the survey began. As compared to the average of the past 14 years, the 2013 average highest one day population has decreased by 2,410. Similar to the percentage decrease of ADP, the 2013 average represents a 40.2% decrease since 2006, which recorded the highest one day population average.

Summary of Juvenile Hall Highest One Day				
2008	2009	2010	2011	2012
7,317	6,914	6,386	5,795	5,154

2013 Summary of Highest One-Day Population				
Q1	Q2	Q3	Q4	Average
4,812	4,942	4,614	4,386	4,687

### Pre-Disposition in Juvenile Halls



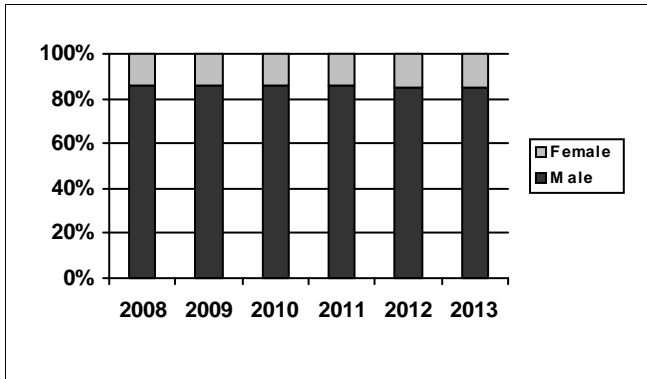
The percentage of youth in Juvenile Halls who are in a pre-disposition status was the same as the previous quarter. The average population of Juvenile Halls for 2013 is divided almost equally between pre-and-post dispositional youth.

Summary of Pre-Disposition in Juvenile Halls				
2008	2009	2010	2011	2012
57%	56%	53%	51%	52%

2013 Summary of Pre-Disposition Juvenile Halls				
Q1	Q2	Q3	Q4	Average
51%	51%	52%	52%	52%

## Fourth Quarter Report, 2013 - Juvenile Hall Data

### Gender Distribution in Juvenile Halls

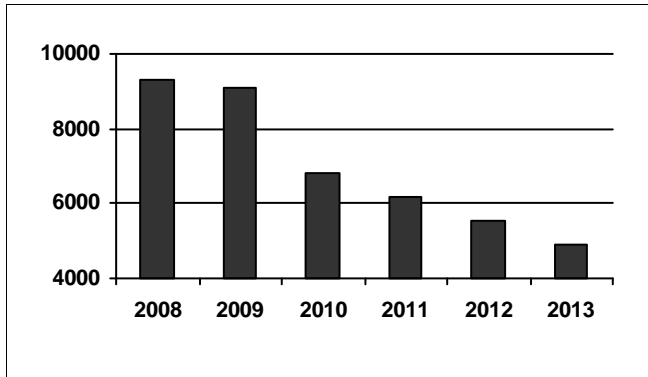


Although ADP has steadily declined, the gender distribution has remained relatively unchanged. Since 2007, girls have made up 14-15% of the Juvenile Hall population statewide

Summary of Males in Juvenile Halls				
2008	2009	2010	2011	2012
86%	86%	86%	86%	85%

2013 Summary of Males in Juvenile Hall				
Q1	Q2	Q3	Q4	Average
85%	85%	84%	85%	85%

### Average Number of Juveniles Booked per Month

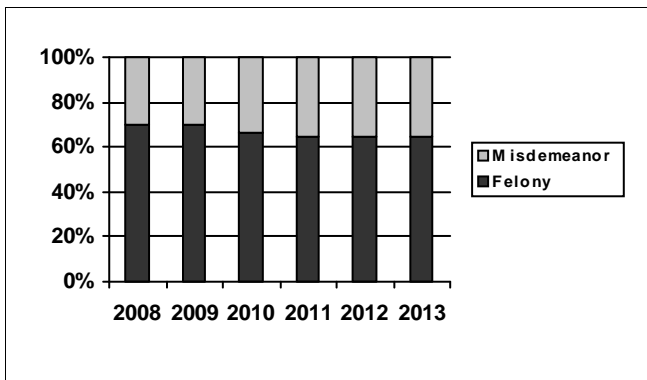


After a slight increase in the Second Quarter of 2013, the number of Juvenile Hall bookings has continued to decline, resulting in an annual average of 4,881 bookings per month. The average number of monthly bookings continues to decline each year and represents a 55.2% decrease since 1999.

Summary of Juveniles Booked per Month				
2008	2009	2010	2011	2012
9,325	9,079	6,802	6,202	5,556

2013 Summary of Monthly Bookings				
Q1	Q2	Q3	Q4	Average
5,205	5,287	4,563	4,479	4,881

### Distribution of Charge in Juvenile Halls



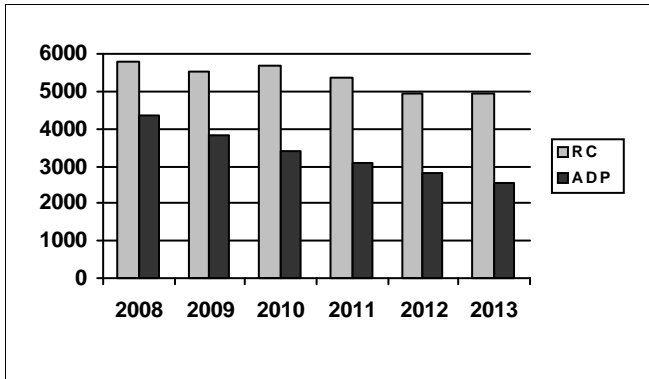
While 2013 began with 64% of the Juvenile Hall population charged with a felony offense, the remainder of the year saw a slight, but steady increase. By the Fourth Quarter of 2013, felony charges represented 66% of the youth in Juvenile Hall. After three years of reports (2007-2009) showed that 70% of youth in Juvenile Halls were booked on a felony charge, the annual percentage of youth in Juvenile Halls for felony offenses has again remained steady at 65% for the past three years (2011-2013).

Summary of Felony Charges in Juvenile Halls				
2008	2009	2010	2011	2012
70%	70%	66%	65%	65%

2013 Summary of Felony Charge Juvenile Hall				
Q1	Q2	Q3	Q4	Average
64%	65%	66%	66%	65%

## Fourth Quarter Report, 2013 - Camp Data

### RC and ADP for Camps

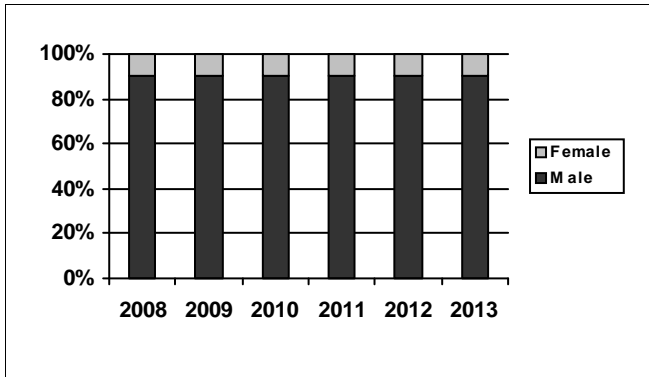


The annual camp ADP continues to decline. The annual camp population in 2013 was 287 fewer than the previous year, and 2,042 fewer than the highest year's camp population (year 1999) which represents a 44% decrease since 1999.

Summary of Camp ADP				
2008	2009	2010	2011	2012
4,338	3,841	3,374	3,105	2,811

2013 Summary of Camp ADP				
Q1	Q2	Q3	Q4	Average
2,534	2,596	2,529	2,437	2,524

### Gender Distribution in Camps

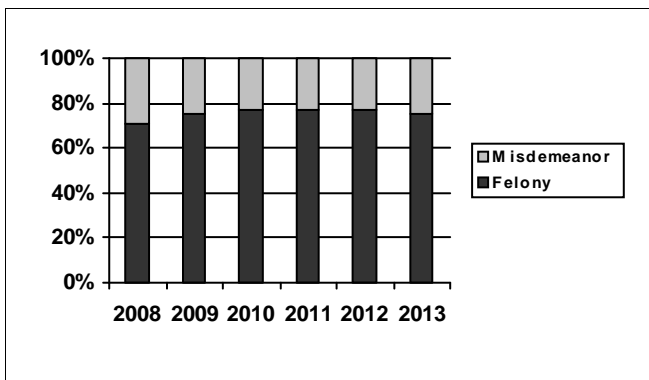


Although there are minor fluctuations between quarters in 2013, the average gender distribution in camps have remained static at 90% boys and 10% girls since 2008.

Summary of Males in Camps				
2008	2009	2010	2011	2012
90%	90%	90%	90%	90%

2013 Summary of Males in Camps				
Q1	Q2	Q3	Q4	Average
91%	90%	89%	91%	90%

### Distribution of Charge in Camps



Over the past three years, the percentage of youth committed to camp programs for felony offenses was at an all-time high. These youth accounted for 77% of the total camp population in 2010, 2011, and 2012. However, this year the percentage of felony offenders in camp decreased to the 2009 level of 75%.

Summary of Felonies in Camps				
2008	2009	2010	2011	2012
71%	75%	77%	77%	77%

2013 Summary of Felonies in Camps				
Q1	Q2	Q3	Q4	Average
76%	74%	75%	76%	75%



## INSTRUCTIONS FOR INTERPRETING THE SURVEY REPORT

**The Overall Capacity, Population and ADP page** is designed to present the JDPS results for the major reporting categories.

- **Capacity:** this category presents the RC in terms of the number of beds in juvenile halls and camps/ranches that meet the BSCC standards.
- **High One Day:** for each month in the quarter, each jurisdiction reports the juvenile hall and camp/ranch populations that together constituted the highest one-day count of the month.
- **Other:** this category refers to the sum of all juveniles who are receiving custody credit while on home supervision, with or without electronic monitoring, or are in alternative confinement programs.

**The County Breakout Report page** is designed to present county-specific information.

- **County comparison:** this page identifies the ADP for each county and the percent that county contributes to the total state juvenile detention population. The counties are ranked in descending order based on their percentage of the overall juvenile detention population in the state.

**The JDPS additional information page** is designed to present all the remaining JDPS results not already listed.

- **One Day Snapshot:** the percentages in this section are percentages of the total ADP for juvenile halls, camps/ranches, and other juveniles in the system.
- **Average number of days that one or more facilities in a county exceeded the RC:** this value is the result of taking all of the counties “number of days of crowding” and averaging the figures submitted by all the jurisdictions. If a jurisdiction had no crowding days, that jurisdiction was not included in the computation. In other words, the value presented indicates the typical number of crowding days per month experienced by jurisdictions that have had one or more days of crowding in the Fourth Quarter of Calendar Year 2013.
- **Average Length of Stay:** these numbers are averages for all juveniles in each category:
  - 1) “Juvenile Hall (all releases)” is computed by first taking the mean length of stay for all juveniles released from juvenile halls in a jurisdiction. Next, all the jurisdictions’ means are averaged to produce a statewide figure.
  - 2) “Juvenile Hall to Camps [ranches]” is computed in the same fashion, but includes only those juveniles released from juvenile hall and placed in a camp or ranch.
  - 3) “Juvenile Hall to other out-of-home placements (i.e. group homes or foster homes)” presents the average length of stay for that subset of juveniles.