

JUVENILE DETENTION PROFILE SURVEY



**SECOND QUARTER
2010**

Corrections Standards Authority
Facilities Standards and Operations Division
600 Bercut Drive
Sacramento CA 95811
(916) 445-5073
www.csa.ca.gov

JUVENILE DETENTION PROFILE SURVEY

EXPLANATION OF RESULTS

The following link titles contain the Juvenile Detention Profile Survey results for the Second Quarter of Calendar Year 2010. **Capacity, Population and ADP Breakout** contains totals for major categories such as Highest One-Day Population, Average Daily Population (ADP), gender, and the age range of detained minors. **Breakout of Juveniles in Detention** contains information regarding counties' ADP and Rated Capacity (RC) breakouts and **Summary of Survey Results** contains information about a wide range of juvenile detention facility issues including crowding, mental health needs, average length of stay, and number of bookings.

Juvenile Hall Data – Part 1 & 2, and Camp Data contains trend information compiled from 2005 through the second quarter of calendar year 2010. The trend data is separated into Juvenile Hall related data and Camp related data.

Please keep the following in mind when reviewing this information:

- For Overall Capacity, Crowding (highest one-day population-the count of minors in detention on the day of each county's highest population) and ADP (the average daily detention population for the reporting period), we have complete data from all jurisdictions in the state that operate juvenile detention facilities.
- Each jurisdiction provides us with the average population, computed across all the days in the month, for each of the three months in the quarter. The weighted average across the three months is then computed for each jurisdiction (with the monthly averages weighted by the number of days in the month). The jurisdictions ADPs are then combined to produce the state's total ADP.
- For some variables (other than ADP), we did not receive complete data from all jurisdictions. In such instances, we used statistical procedures to estimate the statewide total.
- Felony/misdemeanor, gender counts, and age-range breakouts are based upon a one-day snapshot (on the 15th day of the final month of the quarter). These values are used to determine the percentage of the population in each felony/misdemeanor, gender, and age category. The percentages are then applied to the Total ADP to project the expected ADP in each of the felony/misdemeanor, gender, and age-range categories.
- ***Please note:*** *Each quarter, every county with juvenile detention facilities submits their data to the CSA. While we make every effort to review data for accuracy, including contacting individual counties for clarification, CSA cannot be responsible for data reporting errors made at the county level.*

California Corrections Standards Authority
Juvenile Detention Profile Survey - 2nd Quarter, 2010
Overall Capacity, Population and ADP

Overall Capacity and Population								
	JUVENILE HALL		CAMPS		OTHER		TOTAL	
ADP	5,940.0		3,450.5		2,617.6		12,008.1	
Percent of Total	49.5%		28.7%		21.8%		100.0%	
RC *	8,317.0		5,894.0				14,211.0	
High One Day	6,596.0		3,461.0				10,057.0	
Gender by Detention Type								
	JUVENILE HALL		CAMPS		OTHER		TOTAL	
GENDER	ADP	%	ADP	%	ADP	%	ADP	%
Male	5,127.2	86.3%	3,111.8	90.2%	2,169.7	82.9%	10,408.7	86.7%
Female	812.8	13.7%	338.7	9.8%	448.0	17.1%	1,599.4	13.3%
TOTAL	5,940.0	100.0%	3,450.5	100.0%	2,617.6	100.0%	12,008.1	100.0%
Disposition by Gender for Juvenile Halls								
	MALE		FEMALE		TOTAL			
DISPOSITION	Number	%	Number	%	Number	%	Number	%
Pre-Disposition	2,706.0	52.8%	457.9	56.3%	3,163.9	53.3%		
Post-Disposition	2,421.2	47.2%	354.8	43.7%	2,776.1	46.7%		
TOTAL	5,127.2	100.0%	812.8	100.0%	5,940.0	100.0%		
Disposition by Gender for Other Detention								
	MALE		FEMALE		TOTAL			
DISPOSITION	Number	%	Number	%	Number	%	Number	%
Pre-Disposition	966.4	44.5%	212.6	47.5%	1,178.9	45.0%		
Post-Disposition	1,203.3	55.5%	235.4	52.5%	1,438.7	55.0%		
TOTAL	2,169.7	100.0%	448.0	100.0%	2,617.6	100.0%		
Age Range by Type of Detention (One-Day Snapshot)								
	JUVENILE HALL		CAMPS		TOTAL			
AGE RANGES	Number	%	Number	%	Number	%	Number	%
Under 12	10.0	0.2%	0.0	0.0%	10.0	0.1%		
12 to 14	682.0	11.6%	175.0	5.3%	857.0	9.3%		
15 to 17	4,706.0	79.9%	2,488.0	75.7%	7,194.0	78.4%		
18 _Over	490.0	8.3%	622.0	18.9%	1,112.0	12.1%		
TOTAL	5,888.0	100.0%	3,285.0	100.0%	9,173.0	100.0%		

* RC is Rated Capacity which is the number of beds that comply with standards set forth in Title 24, California Code of Regulations.

**County Breakout Report - 2nd Quarter, 2010
Facilities and Alternative Detention**

	County	Rated Capacity	Facilities Detention	Other Detention	ADP	Percent of Total	Cumulative Percent
1	Los Angeles	4,144	2,643.1	617.82	3,260.9	27.16%	27.16%
2	San Diego	1,105	800.4	276.84	1,077.2	8.97%	36.13%
3	Orange	953	619.2	92.56	711.8	5.93%	42.05%
4	Santa Clara	550	386.5	236.05	622.5	5.18%	47.24%
5	Sacramento	395	299.5	297.86	597.3	4.97%	52.21%
6	Alameda	463	281.3	209.98	491.3	4.09%	56.30%
7	Kern	475	397.2	59.71	456.9	3.80%	60.11%
8	Contra Costa	290	313.5	119.41	432.9	3.61%	63.71%
9	Riverside	582	370.8	24.99	395.8	3.30%	67.01%
10	San Bernardino	620	376.8	0.00	376.8	3.14%	70.15%
11	Fresno	590	363.4	0.00	363.4	3.03%	73.17%
12	San Mateo	274	204.0	132.56	336.6	2.80%	75.98%
13	Tulare	330	183.8	95.05	278.8	2.32%	78.30%
14	Stanislaus	158	145.3	62.84	208.2	1.73%	80.03%
15	Monterey	206	168.6	31.69	200.3	1.67%	81.70%
16	San Joaquin	224	194.4	0.00	194.4	1.62%	83.32%
17	San Francisco	234	114.0	78.91	192.9	1.61%	84.93%
18	Santa Barbara	252	186.0	0.00	186.0	1.55%	86.47%
19	Merced	120	109.6	68.46	178.0	1.48%	87.96%
20	Sonoma	188	114.6	50.63	165.3	1.38%	89.33%
21	Ventura	295	160.1	0.00	160.1	1.33%	90.67%
22	Solano	148	104.2	19.52	123.7	1.03%	91.70%
23	Yolo	90	73.9	16.79	90.7	0.76%	92.45%
24	Kings	209	76.0	0.00	76.0	0.63%	93.09%
25	El Dorado	80	53.9	16.66	70.6	0.59%	93.67%
26	Madera	75	56.2	10.56	66.7	0.56%	94.23%
27	Butte	60	54.0	2.99	57.0	0.47%	94.70%
28	Placer	58	32.0	20.75	52.8	0.44%	95.14%
29	Yuba	120	52.6	0.00	52.6	0.44%	95.58%
30	San Luis Obispo	45	38.8	10.93	49.7	0.41%	96.00%
31	Shasta	101	32.0	14.60	46.6	0.39%	96.38%
32	Napa	50	36.3	9.78	46.1	0.38%	96.77%
33	Colusa	162	43.8	0.00	43.8	0.36%	97.13%
34	Humboldt	44	31.0	7.89	38.9	0.32%	97.46%
35	Del Norte	62	37.5	0.00	37.5	0.31%	97.77%
36	Mendocino	43	29.1	0.00	29.1	0.24%	98.01%
37	Santa Cruz	42	21.0	7.37	28.4	0.24%	98.25%
38	Marin	40	19.2	9.08	28.3	0.24%	98.48%
39	Imperial	72	28.1	0.00	28.1	0.23%	98.72%
40	Nevada	30	20.4	2.31	22.7	0.19%	98.91%
41	Lake	40	16.0	4.69	20.7	0.17%	99.08%
42	Tehama	40	17.8	0.00	17.8	0.15%	99.23%
43	San Benito	20	16.0	0.99	17.0	0.14%	99.37%
44	Trinity	28	15.7	0.00	15.7	0.13%	99.50%
45	Siskiyou	20	13.7	1.32	15.0	0.13%	99.62%
46	Glenn	22	14.8	0.00	14.8	0.12%	99.75%
47	Lassen	40	13.4	0.68	14.0	0.12%	99.86%
48	Inyo	14	11.0	2.64	13.6	0.11%	99.98%
49	Tuolumne	0	0.0	1.65	1.6	0.01%	99.99%
50	Amador	0	0.0	1.06	1.1	0.01%	100.00%
51	Mariposa	4	0.2	0.00	0.2	0.00%	100.00%
52	Mono	4	0.0	0.00	0.0	0.00%	100.00%
53	Sierra	0	0.0	0.00	0.0	0.00%	100.00%
		14,211	9,390.5	2,617.6	12,008.1	100.00%	

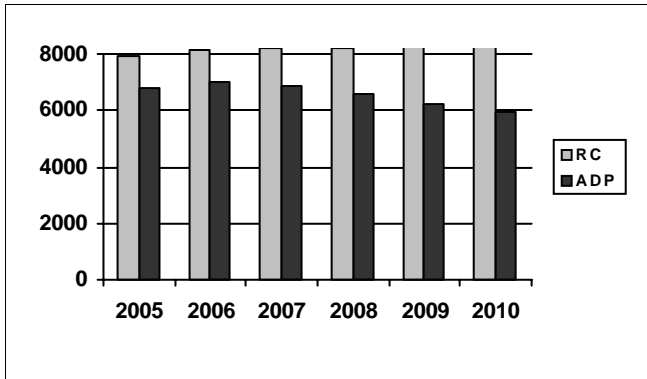
*ADP on County Breakout Report may not equal ADP on other Summary Reports due to rounding

Juvenile Detention Profile Survey

2nd Quarter Report 2010	One Day Snapshot									
	Rated Capacity	Misdemeanor		Felony		Pre-Disposition		Post-Disposition		Total ADP
		Male	Female	Male	Female	Male	Female	Male	Female	
Juvenile Halls	8,317.0	12.6%	3.4%	27.9%	3.1%	2,706.0	457.9	2,421.2	354.8	5,940.0
Camps / Ranches	5,894.0	6.0%	1.2%	22.4%	1.6%			3,111.8	338.7	3,450.5
Other Juveniles in the System		Male	Female	Male	Female	Male	Female	Male	Female	Total ADP
Juveniles on home supervision with electronic monitoring		3.9%	1.1%	7.3%	1.4%	656.6	144.9	642.3	145.0	1,588.7
Juveniles on home supervision without electronic monitoring		1.8%	0.6%	3.0%	0.5%	283.1	64.0	301.6	67.6	716.4
Juveniles alternative confinement programs		0.7%	0.1%	1.3%	0.1%	26.7	3.7	259.3	22.8	312.5
Grand Totals		25.0%	6.4%	61.9%	6.7%	3,672.4	670.5	6,736.3	928.9	12,008.1
Mental Health Snapshot										
Number of open mental health cases this day									3,844.1	
Number of juveniles receiving psychotropic medication									1,304.5	
Crowding										
Average daily population of juveniles in other jurisdictions DUE TO LACK OF SPACE									17.7	
Number of juveniles released early DUE TO LACK OF SPACE									111.4	
Average number of days that one or more facilities in a county exceeded the Rated Capacity									10.2	
Average Bookings Per Month										
Number of Juvenile Hall bookings/admissions									7,093.3	
Number of bookings for weapon-related offenses									481.7	
Number of 601 bookings									51.1	
Number of 777 bookings									1,575.4	
Number of direct file {WIC 602(b) and 707(d)} bookings									71.9	
Final Month of the Quarter (One-Day Snapshot)										
Detained for 707b Offense									1,081.0	
Awaiting placement									522.6	
Awaiting transport to a camp									311.7	
Awaiting transfer to Youth Authority									70.0	
Court commitments to juvenile hall (Ricardo M)									737.0	
Found unfit per 707.01 WIC									93.2	
Direct files to Adult Court-602(b) and 707(d) WIC									383.7	
Hospitalized outside detention facility for MEDICAL CARE									6.0	
Hospitalized outside detention facility for MENTAL HEALTH CARE									8.0	
Believed to be criminal illegal aliens									103.1	
Average Length of Stay										
Juvenile Hall (all releases)									28.7	
Juvenile Hall to Camps									46.6	
Juvenile Hall to other out-of-home placements (i.e. group homes or foster homes)									44.3	
Juvenile Hall who were found unfit (per juvenile court)									362.8	
Juvenile Hall who were direct filings to adult court									290.6	
Camps (all releases)									108.9	
Cumulative Total for the Quarter										
Detention Behavior						Juvenile Halls	Camps / Ranches	Other Detention		
Assaults by juveniles on staff						55.8	3.0	0.0		
Escapes						11.0	94.0	1.0		
Suicide Attempts						53.2	1.0	0.0		
Suicides						0.0	0.0	0.0		

Second Quarter Report, 2010 - Juvenile Hall Data

Rated Capacity RC and ADP for Juvenile Halls

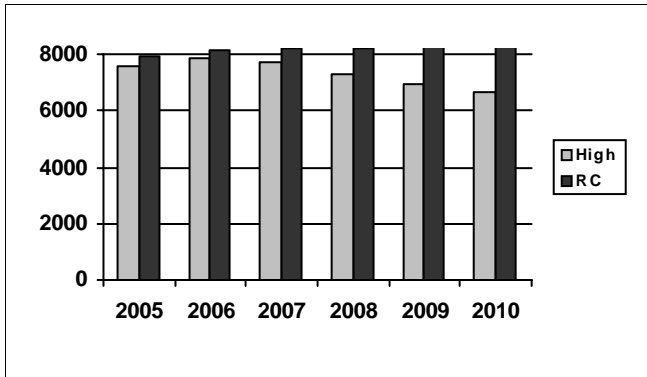


The average daily population of California juvenile halls decreased by more than 1,100 youth over the annual ADP reported in 2008.

Summary of Juvenile Hall ADP				
2005	2006	2007	2008	2009
6,818	7,017	6,858	6,614	6,197

2010 Summary of Juvenile Hall ADP			
Q1	Q2		Average
5,964	5,940		5,952

Juvenile Hall Highest One-Day Population and RC

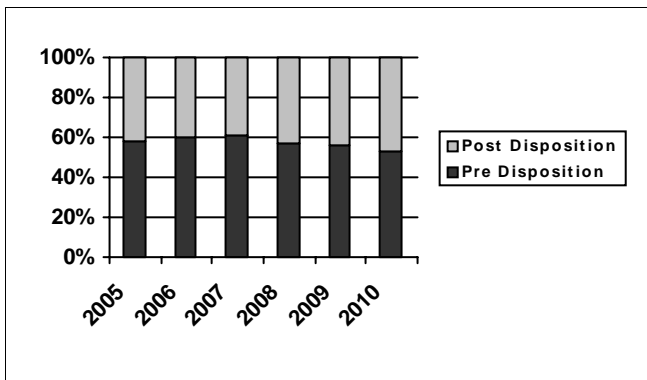


The highest one day population of California juvenile halls also decreased by more than 1,100 youth over the annual high one-day average computed in 2008.

Summary of Juvenile Hall Highest One Day				
2005	2006	2007	2008	2009
7,575	7,837	7,686	7,317	6,914

2010 Summary of Highest One-Day Population			
Q1	Q2		Average
6,698	6,596		6,647

Pre-Disposition in Juvenile Halls



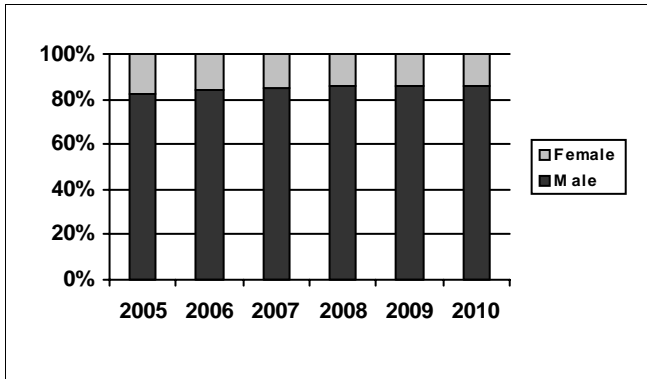
The percentage of youth in juvenile halls who are pre-disposition continues to decline.

Summary of Pre-Disposition in Juvenile Halls				
2005	2006	2007	2008	2009
58%	60%	61%	57%	56%

2010 Summary of Pre-Disposition Juvenile Halls			
Q1	Q2		Average
54%	53%		53%

Second Quarter Report, 2010 - Juvenile Hall Data

Gender Distribution in Juvenile Halls



The percentage of male minors in juvenile halls rose a single percentage point this quarter.

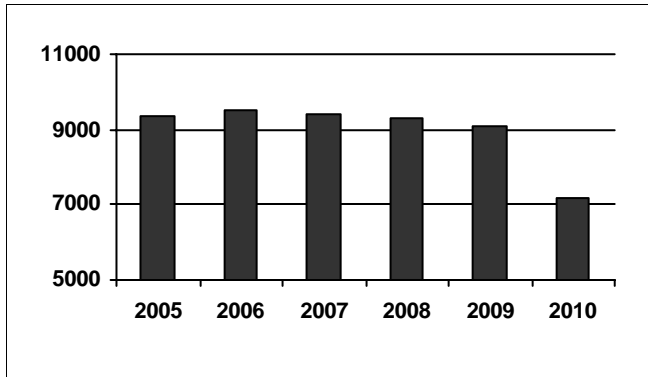
Summary of Males in Juvenile Halls

2005	2006	2007	2008	2009
82%	84%	85%	86%	86%

2010 Summary of Males in Juvenile Hall

Q1	Q2	Average
86%	86%	86%

Average Number of Juveniles Booked per Month



The number of juvenile hall bookings declined by nearly 600 when compared to the previous quarter.

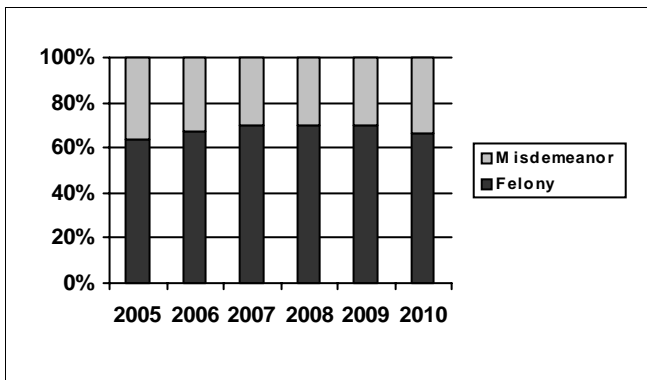
Summary of Juveniles Booked per Month

2005	2006	2007	2008	2009
9,353	9,539	9,422	9,325	9,079

2010 Summary of Monthly Bookings

Q1	Q2	Average
7,247	7,093	7,170

Distribution of Charge in Juvenile Halls



3rd Quarter data is identical to the data reported 1st and 2nd Quarters in the percentage of felony charges in juvenile halls.

Summary of Felony Charges in Juvenile Halls

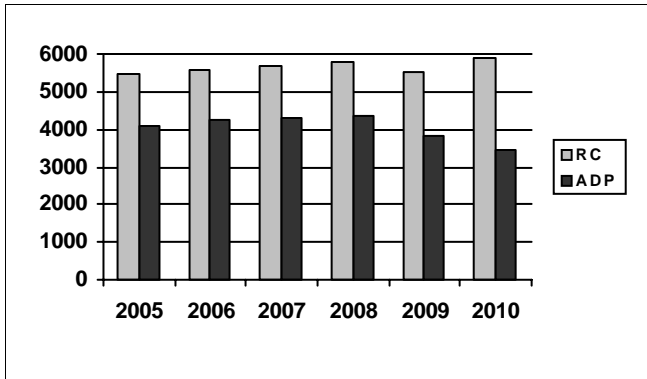
2005	2006	2007	2008	2009
64%	67%	70%	70%	70%

2010 Summary of Felony Charge Juvenile Hall

Q1	Q2	Average
66%	66%	66%

Second Quarter Report, 2010 - Camp Data

RC and ADP for Camps

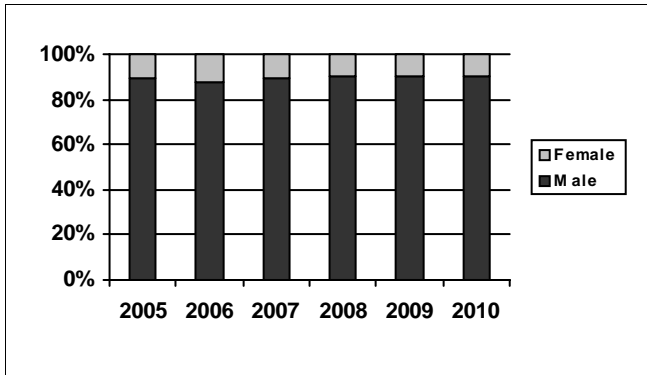


The population of California's probation camps decreased slightly over the previous quarter.

Summary of Camp ADP				
2005	2006	2007	2008	2009
4,097	4,252	4,278	4,338	3,841

2010 Summary of Camp ADP				
Q1	Q2			Average
3,422	3,450			3,436

Gender Distribution in Camps

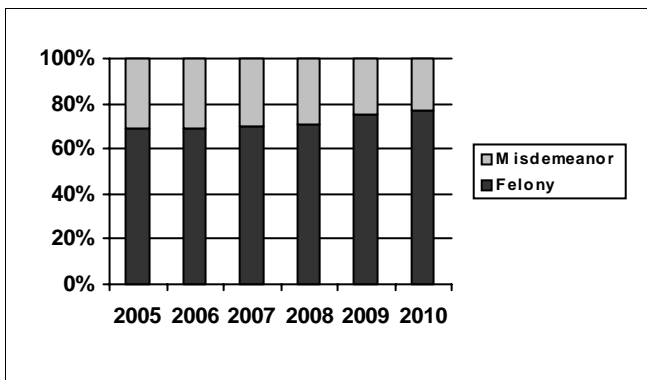


Data reflects the same small percentage of girls in camp programs as in the four previous quarters.

Summary of Males in Camps				
2005	2006	2007	2008	2009
89%	88%	89%	90%	90%

2010 Summary of Males in Camps				
Q1	Q2			Average
90%	90%			90%

Distribution of Charge in Camps



The percentage of felony offenders in the 2nd and 3rd quarters were the same, again reflecting that 3/4 of the youth in camps are there for a felony offense.

Summary of Felonies in Camps				
2005	2006	2007	2008	2009
69%	69%	70%	71%	75%

2010 Summary of Felonies in Camps				
Q1	Q2			Average
76%	77%			77%

Instructions for Interpreting the Survey Report

Capacity, Population and ADP Breakout is designed to present the Juvenile Detention Profile Survey results for the major reporting categories.

- **Capacity:** this category presents the Rated Capacity (RC) in terms of the number of beds in juvenile halls and camps/ranches that meet the Corrections Standards Authority (CSA) standards.
- **High One-Day:** each jurisdiction reports for each month in the quarter, the juvenile hall and camp/ranch populations that, together, constituted the highest one-day count of the month.
- **Other:** this category refers to the sum of all juveniles who are receiving custody credit while on home supervision with or without electronic monitoring, or in alternative confinement programs.

Breakout of Juveniles in Detention is designed to present County-specific counts.

- **County-specific counts:** this page identifies the ADP for each county and the percent that county contributes to the total state juvenile detention population. The counties are ranked in descending order based on their percentage of the overall juvenile detention population in the state.

Summary of Survey Results is designed to present all the remaining Juvenile Detention Profile Survey results not already listed.

- **One-Day Snapshot:** the percentages in this section are percentages of the total ADP for juvenile halls, camps/ranches, and other juveniles in the system.
- **Average number of days that one or more facilities in a county exceeded the Rated Capacity:** this value is the result of taking all of the counties "number of days of crowding" and averaging the figures submitted by all the jurisdictions. If a jurisdiction had no crowding days, that jurisdiction was not included in the computation. In other words, the value presented indicates the typical number of crowding days per month experienced by jurisdictions that have had one or more days of crowding in the Second Quarter of Calendar Year 2010.
- **Average Length of Stay:** these numbers are averages for all juveniles in each category: 1) "juvenile hall (all releases)" is computed by first taking the mean length of stay for all juveniles released from juvenile halls in a jurisdiction. Next, all the jurisdictions' means are averaged to produce a statewide figure; 2) "juvenile hall to camps/ranches" is computed in the same fashion, but includes only those juveniles released from juvenile hall and placed in a camp or ranch; 3) "juvenile hall to other out-of-home placements" presents the average length of stay for that subset of juveniles.