

# JAIL PROFILE SURVEY

## 2009, 1st QUARTER SURVEY RESULTS

FACILITIES STANDARDS AND OPERATIONS DIVISION  
CORRECTIONS STANDARDS AUTHORITY

STATE OF CALIFORNIA  
600 Bercut Drive  
Sacramento, CA 95811  
(916) 445-5073  
[www.csa.ca.gov](http://www.csa.ca.gov)

# JAIL PROFILE SURVEY

## EXPLANATION OF RESULTS

The following link titles contain the Jail Profile Survey results for the first quarter of the calendar year 2009. **Quarterly Totals** contains the first quarter totals based upon the monthly and quarterly data submitted to us by the participating jurisdictions. The next six (6) link titles show the trend data for variables we have been tracking for the last ten years (**Average Number of Persons Booked**, **Average Length of Stay**, **Average Daily Population**, **Percentage Non-Sentenced**, **Non-Sentenced ADP**, and **Sentenced ADP**). The remainder of this page provides explanations and clarifications of the data presented.

### **Quarterly Totals** link

- Unless otherwise noted, “projected totals” are based upon the average per day for the variable in question. For example, there was an average of 81,138 inmates per day in local jails (excluding Type I’s) during the three-month span of January thru March 2009.
- For some variables (other than ADP), we did not receive complete data from all jurisdictions. In such instances, we used statistical procedures to estimate the statewide total.
- The number for “Bookings” is the average of the monthly totals for January, February, and March.
- For the following variables, the numbers presented are the totals as of the mid-quarter (i.e., February 15, 2009); Pretrial Release, Early Release, 2 and 3 Strikes, Felony Warrants, Misdemeanor Warrants, Juveniles in Custody and Undocumented Aliens.
- “Assaults” is the total number of serious inmate assaults on staff (resulting in a crime report), statewide, during the first quarter of calendar year 2009.

### **Average Number of Persons Booked**, **Average Length of Stay**, **Average Daily Population**, **Percentage Non-Sentenced**, **Non-Sentenced ADP**, and **Sentenced ADP** links

- The data in the 10-Year Summary tables are based upon survey data which the Corrections Standards Authority has gathered since the early 1980’s.
- Prior to 1995, yearly averages were reported to the CSA on an annual basis. Yearly averages from 1996 to the present time have been the average of the 12 calendar months. In 1995, the yearly figure reported is the fourth quarter average, since we do not have data from the first three quarters.

# CORRECTIONS STANDARDS AUTHORITY JAIL PROFILE SURVEY

**Reporting Period: January to March, 2009**

## County Jail Populations

ADP <sup>a</sup>	81,138 <sup>b</sup>
Holding Areas	1,425
Average "Under the Roof" <sup>c</sup>	82,563 <sup>d</sup>
Highest One Day Count	86,073 <sup>e</sup>

## County Jail Populations

Felony	63,985
Misdemeanor	17,153
<b>Total</b>	<b>81,138</b>
Non-Sentenced Males	49,046
Non-Sentenced Females	6,298
Sentenced Males	21,957
Sentenced Females	3,837
<b>Total</b>	<b>81,138</b>
Maximum Security Inmates	22,464
Medium Security Inmates	36,271
Minimum Security Inmates	22,403
<b>Total</b>	<b>81,138</b>

## Inmates From Other Jurisdictions

Housed on Federal Contract	4,771
Housed on Contract with CDC	1,852
From Other Counties on Contract	30
Awaiting Transport	2,779
<b>Total</b>	<b>9,432</b>

## Special Use Beds

Medical Beds	853
Mental Health Beds	3,783

## Released Per Month Due to Lack of Space

Pretrial Release	8,756 <sup>f</sup>
Early Release	6,444 <sup>f</sup>
<b>Total</b>	<b>15,200</b>

## Inmates with 2 and 3 Strikes

2 Strike Inmates	1,504 <sup>g</sup>
3 Strike Inmates	719 <sup>g</sup>
<b>Total</b>	<b>2,223</b>

## Unservd Warrants

Felony Warrants	236,325 <sup>g</sup>
Misdemeanor Warrants	1,711,724 <sup>g</sup>
<b>Total</b>	<b>1,948,049</b>

## Other Jail Profile Survey Variables

Bookings Per Month	102,516 <sup>f</sup>
Juveniles in Custody	3 <sup>f</sup>
Criminal / Illegal Aliens	11,668
Assaults On Staff	284

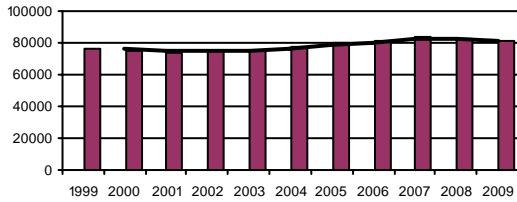
- a. The Average Daily Population for all jurisdictions (excluding Type I's) does not include inmates in holding areas.
- b. Unless otherwise indicated, the numbers reported are the average across the days in the quarter.
- c. "Under the Roof" is the sum of the Average Daily Population plus the average daily number of inmates in Holding Areas.
- d. Totals may not be the exact sum of the subtotals due to rounding.
- e. The sum of all Highest One Day inmate population counts from all jurisdictions.
- f. These data are collected on a monthly basis, this figure is an average of the total numbers collected each month during this quarter.
- g. These data are one-day snapshots collected at the end of the quarter.

# Jail Profile Survey

2009

## Average Daily Population

10 Year Summary									
1999	2000	2001	2002	2003	2004	2005	2006	2007	2008
76,311	75,044	73,824	75,096	75,243	76,887	79,705	81,104	83,184	82,397



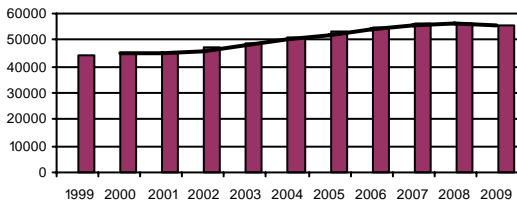
The Average Daily Population (ADP) for the first quarter of 2009 reflects a slight decrease over the fourth quarter of 2008. In addition, ADP for the first quarter of 2009 is lower than the first quarter of 2008 reflecting a continuing downtrend in ADP that peaked in 2007.

## Quarterly Results

	Q1	Q2	Q3	Q4	Average
2008	82,416	82,658	82,748	81,769	82,397
2009	81,138				81,138

## Non-sentenced ADP

10 Year Summary									
1999	2000	2001	2002	2003	2004	2005	2006	2007	2008
44,509	44,940	45,187	47,053	49,121	50,715	53,357	54,585	56,571	56,232



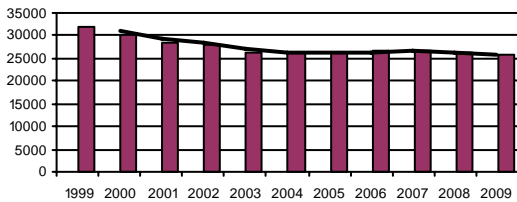
The Non-Sentenced Population ADP was 55,344 for the first quarter of 2009. Not only is this a slight decrease from the fourth quarter of 2008, it also reflects a decrease from the first quarter of 2008.

## Quarterly Results

	Q1	Q2	Q3	Q4	Average
2008	56,519	56,196	56,314	55,902	56,232
2009	55,344				55,344

## Sentenced ADP

10 Year Summary									
1999	2000	2001	2002	2003	2004	2005	2006	2007	2008
31,802	30,109	28,637	28,043	26,121	26,171	26,347	26,519	26,613	26,165



The first quarter Sentenced ADP reflects a decrease from the fourth quarter of 2008. The first quarter 2009 sentenced population also reflects a slight decrease from the first quarter 2008 average.

## Quarterly Results

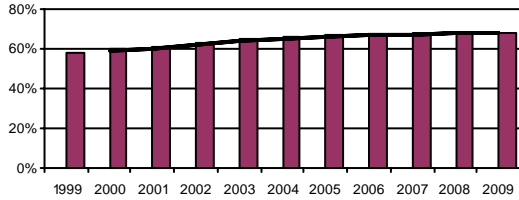
	Q1	Q2	Q3	Q4	Average
2008	25,897	26,462	26,433	25,868	26,165
2009	25,794				25,794

# Jail Profile Survey

2009

## Percentage Non-sentenced

10 Year Summary									
1999	2000	2001	2002	2003	2004	2005	2006	2007	2008
58%	60%	61%	63%	65%	66%	67%	67%	68%	68%



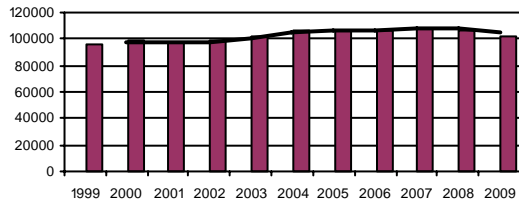
The Percentage of Non-Sentenced inmates remained the same in the first quarter of 2009 as the fourth quarter of 2008 at 68%, and, on average, has stabilized at this percentage since 2007.

## Quarterly Results

	Q1	Q2	Q3	Q4	Average
2008	69%	68%	68%	68%	68%
2009	68%				68%

## Average Number of Persons Booked Per Month

10 Year Summary									
1999	2000	2001	2002	2003	2004	2005	2006	2007	2008
96,684	98,486	97,089	98,603	102,217	106,862	107,120	106,868	108,238	107,086



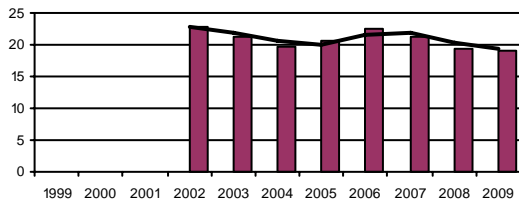
While the Average Number of Persons Booked Per Month in the first quarter of 2009 remains relatively unchanged from the fourth quarter of 2008, the number reflects a 2.83% decrease in bookings from the first quarter of 2008.

## Quarterly Results

	Q1	Q2	Q3	Q4	Average
2008	105,507	108,927	111,446	102,466	107,086
2009	102,516				102,516

## Average Length Of Stay

10 Year Summary									
1999	2000	2001	2002	2003	2004	2005	2006	2007	2008
			22.7	21.2	19.8	20.5	22.5	21.4	19.4



While the Average Length of Stay in the first quarter of 2009 decreased 6.34% from the fourth quarter of 2008, it remained unchanged from the first quarter of 2008.

## Quarterly Results

	Q1	Q2	Q3	Q4	Average
2008	19.2	19.1	18.9	20.5	19.4
2009	19.2				19.2

# Average Daily Population

Non-sentenced / Sentenced Male / Female

California County Jails - For Months Of January - March 2009

	Non-sentenced						Sentenced						Total
	Male		Female		Total		Male		Female		Total		
	#	%	#	%	#	%	#	%	#	%	#	%	
1. Alameda Sheriff's Dept.	3,307	92%	282	8%	3,589	81%	733	87%	109	13%	842	19%	4,431
2. Amador Sheriff's Dept.	41	74%	14	26%	55	62%	25	76%	8	24%	33	38%	88
3. Butte Sheriff's Dept.	225	86%	35	14%	260	58%	143	76%	44	24%	188	42%	448
4. Calaveras Sheriff's Dept.	39	83%	8	17%	46	63%	25	91%	2	9%	27	37%	73
5. Colusa Sheriff's Dept.	23	87%	3	13%	26	58%	16	81%	4	19%	19	42%	46
6. Contra Costa Sheriff's Dept.	1,188	86%	188	14%	1,376	85%	223	90%	24	10%	247	15%	1,623
7. Del Norte Sheriff's Dept.	75	87%	11	13%	86	61%	42	76%	13	24%	55	39%	141
8. El Dorado Sheriff's Dept.	154	87%	24	13%	178	51%	139	83%	29	17%	168	49%	347
9. Fresno Sheriff's Dept.	1,953	89%	237	11%	2,190	75%	607	83%	128	17%	735	25%	2,925
10. Glenn Sheriff's Dept.	57	87%	9	13%	66	66%	26	76%	8	24%	34	34%	100
11. Humboldt Sheriff's Dept.	192	86%	32	14%	224	67%	95	86%	15	14%	110	33%	334
12. Imperial Sheriff's Dept.	424	90%	49	10%	474	76%	128	86%	20	14%	148	24%	622
13. Inyo Sheriff's Dept.	30	77%	9	23%	39	43%	43	83%	9	17%	52	57%	91
14. Kern Sheriff's Dept.	1,505	88%	212	12%	1,717	76%	429	78%	124	22%	553	24%	2,270
15. Kings Sheriff's Dept.	192	87%	29	13%	221	62%	108	79%	29	21%	138	38%	358
16. Lake Sheriff's Dept.	113	85%	20	15%	133	61%	72	84%	14	16%	85	39%	218
17. Lassen Sheriff's Dept.	35	75%	12	25%	46	53%	31	73%	11	27%	42	47%	88
18. Los Angeles Sheriff's Dept.	10,876	89%	1,297	11%	12,173	67%	5,532	91%	560	9%	6,091	33%	18,264
19. Madera Corrections Dept.	211	79%	57	21%	268	59%	161	88%	22	12%	183	41%	451
20. Marin Sheriff's Dept.	210	91%	21	9%	231	80%	45	80%	11	20%	56	20%	287
21. Mariposa Sheriff's Dept.	20	77%	6	23%	26	48%	23	83%	5	17%	28	52%	54
22. Mendocino Sheriff's Dept.	174	90%	18	10%	193	65%	90	85%	16	15%	106	35%	298
23. Merced Sheriff's Dept.	502	89%	62	11%	564	73%	187	90%	21	10%	208	27%	772
24. Modoc Sheriff's Dept.	17	89%	2	11%	19	62%	11	97%	0	3%	12	38%	30
25. Mono Sheriff's Dept.	19	89%	2	11%	22	52%	18	92%	2	8%	20	48%	42
26. Monterey Sheriff's Dept.	695	90%	78	10%	773	77%	193	84%	35	16%	228	23%	1,001
27. Napa Corrections Dept.	153	88%	21	12%	175	69%	68	85%	12	15%	80	31%	255
28. Nevada Sheriff's Dept.	82	88%	11	12%	93	57%	58	82%	13	18%	71	43%	164
29. Orange Sheriff's Dept.	2,785	89%	335	11%	3,120	54%	2,264	84%	438	16%	2,702	46%	5,822
30. Placer Sheriff's Dept.	295	88%	41	12%	336	65%	151	83%	30	17%	181	35%	518
31. Plumas Sheriff's Dept.	21	87%	3	13%	24	42%	26	81%	6	19%	32	58%	56
32. Riverside Sheriff's Dept.	2,542	90%	272	10%	2,814	79%	601	81%	137	19%	738	21%	3,551
33. Sacramento Sheriff's Dept.	2,408	90%	266	10%	2,675	59%	1,630	86%	257	14%	1,887	41%	4,562
34. San Benito Sheriff's Dept.	68	84%	13	16%	81	63%	42	90%	5	10%	47	37%	128
35. San Bernardino Sheriff's Dept.	3,864	87%	566	13%	4,429	78%	1,018	81%	234	19%	1,252	22%	5,681

# Average Daily Population

Non-sentenced / Sentenced Male / Female

California County Jails - For Months Of January - March 2009

	Non-sentenced						Sentenced						Total
	Male		Female		Total		Male		Female		Total		
	#	%	#	%	#	%	#	%	#	%	#	%	
36. San Diego Sheriff's Dept.	2,877	86%	460	14%	3,337	66%	1,410	82%	309	18%	1,719	34%	5,056
37. San Diego Work Furlough	0	0%	0	0%	0	0%	191	79%	50	21%	241	100%	241
38. San Francisco Sheriff's Dept.	1,378	90%	157	10%	1,536	80%	316	83%	65	17%	381	20%	1,916
39. San Joaquin Sheriff's Dept.	784	89%	96	11%	880	57%	567	85%	104	15%	670	43%	1,550
40. San Luis Obispo Sheriff's Dept.	192	89%	23	11%	215	44%	231	86%	38	14%	268	56%	483
41. San Mateo Sheriff's Dept.	677	89%	81	11%	758	66%	328	86%	55	14%	383	34%	1,141
42. Santa Ana Police Dept.	406	87%	60	13%	466	99%	6	95%	0	5%	6	1%	472
43. Santa Barbara Sheriff's Dept.	621	87%	92	13%	713	77%	176	80%	43	20%	219	23%	932
44. Santa Clara Corrections Dept.	2,665	88%	374	12%	3,039	70%	1,105	85%	188	15%	1,294	30%	4,333
45. Santa Cruz Sheriff's Dept.	186	87%	29	13%	214	47%	214	89%	28	11%	242	53%	456
46. Shasta Sheriff's Dept.	217	84%	41	16%	259	77%	68	86%	11	14%	79	23%	338
47. Sierra Sheriff's Dept.	4	80%	1	20%	5	71%	1	67%	1	33%	2	29%	7
48. Siskiyou Sheriff's Dept.	62	90%	7	10%	69	75%	17	73%	6	27%	23	25%	92
49. Solano Sheriff's Dept.	662	88%	93	12%	756	77%	186	81%	45	19%	231	23%	986
50. Sonoma Sheriff's Dept.	500	88%	67	12%	567	55%	399	85%	69	15%	468	45%	1,036
51. Stanislaus Sheriff's Dept.	757	88%	101	12%	858	65%	358	78%	100	22%	457	35%	1,315
52. Sutter Sheriff's Dept.	169	88%	23	12%	192	71%	56	71%	23	29%	79	29%	270
53. Tehama Sheriff's Dept.	71	81%	17	19%	88	53%	68	86%	11	14%	79	47%	167
54. Trinity Sheriff's Dept.	16	89%	2	11%	18	44%	21	93%	2	7%	22	56%	40
55. Tulare Sheriff's Dept.	701	90%	77	10%	778	52%	575	81%	136	19%	711	48%	1,489
56. Tuolumne Sheriff's Dept.	48	80%	12	20%	61	52%	40	73%	15	27%	55	48%	116
57. Ventura Sheriff's Dept.	995	86%	159	14%	1,154	69%	426	82%	93	18%	520	31%	1,674
58. Ventura Work Furlough	0	0%	0	0%	0	0%	71	78%	20	22%	91	100%	91
59. Yolo Sheriff's Dept.	258	87%	38	13%	296	75%	76	78%	21	22%	98	25%	394
60. Yuba Sheriff's Dept.	305	88%	41	12%	346	86%	45	79%	12	21%	57	14%	403
<b>Statewide</b>	<b>49,045</b>	<b>89%</b>	<b>6,298</b>	<b>11%</b>	<b>55,344</b>	<b>68%</b>	<b>21,957</b>	<b>85%</b>	<b>3,837</b>	<b>15%</b>	<b>25,794</b>	<b>32%</b>	<b>81,137</b>

## Jail Populations: Quarter 1, 2008 Versus Quarter 1, 2009

Jurisdiction	Qtr 1, 2008	Qtr 1, 2009	Qtr 1, 2009 Minus Qtr 1, 2008	Qtr 1, 2008 To Qtr 1, 2009 % +/-	% of Total Increase or Decrease	Cum %	Cum Total
San Bernardino Sheriff's Dept.	5,428	5,682	254	4.7%	22.4%	22.44%	254
Imperial Sheriff's Dept.	418	622	204	48.8%	18.0%	40.46%	458
Contra Costa Sheriff's Dept.	1,511	1,623	112	7.4%	9.9%	50.35%	570
Fresno Sheriff's Dept.	2,864	2,926	62	2.2%	5.5%	55.83%	632
Madera Corrections Dept.	395	451	56	14.2%	4.9%	60.78%	688
Santa Ana Police Dept.	423	472	49	11.6%	4.3%	65.11%	737
Ventura Sheriff's Dept.	1,627	1,674	47	2.9%	4.2%	69.26%	784
Merced Sheriff's Dept.	726	772	46	6.3%	4.1%	73.32%	830
Alameda Sheriff's Dept.	4,392	4,431	39	0.9%	3.4%	76.77%	869
San Mateo Sheriff's Dept.	1,103	1,142	39	3.5%	3.4%	80.21%	908
Sacramento Sheriff's Dept.	4,526	4,562	36	0.8%	3.2%	83.39%	944
San Joaquin Sheriff's Dept.	1,526	1,550	24	1.6%	2.1%	85.51%	968
El Dorado Sheriff's Dept.	323	346	23	7.1%	2.0%	87.54%	991
Plumas Sheriff's Dept.	37	56	19	51.4%	1.7%	89.22%	1,010
San Benito Sheriff's Dept.	109	127	18	16.5%	1.6%	90.81%	1,028
Napa Corrections Dept.	239	255	16	6.7%	1.4%	92.23%	1,044
Inyo Sheriff's Dept.	76	91	15	19.7%	1.3%	93.55%	1,059
Mono Sheriff's Dept.	29	42	13	44.8%	1.1%	94.70%	1,072
San Diego Work Furlough	228	241	13	5.7%	1.1%	95.85%	1,085
Modoc Sheriff's Dept.	18	30	12	66.7%	1.1%	96.91%	1,097
Kings Sheriff's Dept.	351	359	8	2.3%	0.7%	97.61%	1,105
Siskiyou Sheriff's Dept.	85	92	7	8.2%	0.6%	98.23%	1,112
Mariposa Sheriff's Dept.	47	53	6	12.8%	0.5%	98.76%	1,118
Sonoma Sheriff's Dept.	1,030	1,035	5	0.5%	0.4%	99.20%	1,123
Mendocino Sheriff's Dept.	295	298	3	1.0%	0.3%	99.47%	1,126
Glenn Sheriff's Dept.	97	100	3	3.1%	0.3%	99.73%	1,129
Del Norte Sheriff's Dept.	138	141	3	2.2%	0.3%	100.00%	1,132
Sutter Sheriff's Dept.	271	271	0	0.0%	0.0%	100.00%	1,132
Sierra Sheriff's Dept.	8	6	-2	-25.0%	0.1%	0.08%	-2
Lassen Sheriff's Dept.	90	88	-2	-2.2%	0.1%	0.17%	-4
Colusa Sheriff's Dept.	49	46	-3	-6.1%	0.1%	0.29%	-7
Trinity Sheriff's Dept.	43	40	-3	-7.0%	0.1%	0.41%	-10
Calaveras Sheriff's Dept.	76	73	-3	-3.9%	0.1%	0.54%	-13
Kern Sheriff's Dept.	2,273	2,270	-3	-0.1%	0.1%	0.66%	-16
Amador Sheriff's Dept.	90	87	-3	-3.3%	0.1%	0.79%	-19
Humboldt Sheriff's Dept.	341	334	-7	-2.1%	0.3%	1.08%	-26
Shasta Sheriff's Dept.	344	337	-7	-2.0%	0.3%	1.37%	-33
Santa Barbara Sheriff's Dept.	944	932	-12	-1.3%	0.5%	1.87%	-45
Tehama Sheriff's Dept.	183	167	-16	-8.7%	0.7%	2.53%	-61
Lake Sheriff's Dept.	238	217	-21	-8.8%	0.9%	3.40%	-82
Tuolumne Sheriff's Dept.	138	115	-23	-16.7%	1.0%	4.36%	-105
Ventura Work Furlough	118	92	-26	-22.0%	1.1%	5.44%	-131
Yolo Sheriff's Dept.	421	394	-27	-6.4%	1.1%	6.56%	-158
Marin Sheriff's Dept.	315	288	-27	-8.6%	1.1%	7.68%	-185
Nevada Sheriff's Dept.	191	164	-27	-14.1%	1.1%	8.80%	-212
Butte Sheriff's Dept.	479	448	-31	-6.5%	1.3%	10.08%	-243
Stanislaus Sheriff's Dept.	1,346	1,315	-31	-2.3%	1.3%	11.37%	-274
Yuba Sheriff's Dept.	435	403	-32	-7.4%	1.3%	12.70%	-306
Santa Cruz Sheriff's Dept.	488	456	-32	-6.6%	1.3%	14.02%	-338
San Luis Obispo Sheriff's Dept.	522	483	-39	-7.5%	1.6%	15.64%	-377
Tulare Sheriff's Dept.	1,543	1,490	-53	-3.4%	2.2%	17.84%	-430
Solano Sheriff's Dept.	1,045	987	-58	-5.6%	2.4%	20.25%	-488
Placer Sheriff's Dept.	577	517	-60	-10.4%	2.5%	22.74%	-548
Monterey Sheriff's Dept.	1,090	1,001	-89	-8.2%	3.7%	26.43%	-637
Riverside Sheriff's Dept.	3,642	3,552	-90	-2.5%	3.7%	30.17%	-727
San Diego Sheriff's Dept.	5,159	5,056	-103	-2.0%	4.3%	34.44%	-830
Orange Sheriff's Dept.	5,963	5,822	-141	-2.4%	5.9%	40.29%	-971
Santa Clara Corrections Dept.	4,513	4,334	-179	-4.0%	7.4%	47.72%	-1,150
San Francisco Sheriff's Dept.	2,107	1,916	-191	-9.1%	7.9%	55.64%	-1,341
Los Angeles Sheriff's Dept.	19,334	18,265	-1,069	-5.5%	44.4%	100.00%	-2,410
	82,417	81,139	-1,278	Note: Totals subject to slight variation due to rounding			
		Total Increase:	1,132				
		Total Decrease:	-2,410				



**Interpretation of Table:**  
**JAIL POPULATIONS: 1<sup>st</sup> Qtr Calendar Year '08 versus 1<sup>st</sup> Qtr Calendar Year '09**

This table:

- summarizes the ADP results for the 60 jurisdictions in California reporting data from Type II, III, and IV jails;
- summarizes jurisdiction ADP results for the most recent quarter (Column C);
- compares jurisdiction ADP for the most recent quarter with the same quarter last year (Column B);
- ranks the jurisdictions in terms of gains or losses in ADP from high to low (Column D);
- lists the percentage growth or decline in ADP for each jurisdiction (Column E);
- lists the percentage of the overall State increase or decrease in ADP that is represented by each jurisdiction (Column F);
- lists, by jurisdiction, the cumulative percentage increase and decrease in the State ADP starting with the jurisdiction with the highest percentage of the increase and proceeding to the jurisdiction with the highest percentage of the decrease (Column G);
- lists, by jurisdiction, the cumulative total increase and decrease in the State ADP starting with the jurisdiction with the highest increase and proceeding to the jurisdiction with the biggest decrease (Column H); and,
- lists the jurisdictions that experienced decreases in their ADP as shaded.

Some important conclusions from this table are:

1. The two numbers at the bottom indicate the "total increase" in ADP (in this case 1,132) and "total decrease" in ADP (-2,410). In other words, the jurisdictions experiencing increases had a total increase of 1,132 ADP; and the jurisdictions experiencing decreases had a total decrease of 2,410 ADP. Subtracting 2,410 from 1,132 produces the overall decrease of 1,278 between the first quarter of calendar year 2008 and the first quarter of calendar year 2009.
2. The San Bernardino Sheriff's Dept. ADP increase of 254 is 22.4% of the total increase of 1,132. Twenty-seven jurisdictions had increases (down to Del Norte Sheriff's Dept.) with one jurisdiction reporting no increase. When you get to Del Norte Sheriff's Dept., you have accounted for 100% of the increases (100% of the cumulative total of 1,132).
3. Jurisdictions that experienced a decrease in ADP are listed from smallest decrease to largest decrease (Sierra Sheriff's Dept. to Los Angeles Sheriff's Dept.). When you get to the bottom of the table, you have accounted for 100% of the total decreases of 2,410 inmates.
4. The cumulative percentage of ADP increase for the top four jurisdictions (San Bernardino Sheriff's Dept. to Fresno Sheriff's Dept.) is 55.83%. In other words, four jurisdictions accounted for almost 56% of the total ADP increase. Four jurisdictions (Orange Sheriff's Dept., Santa Clara Corrections Dept., San Francisco Sheriff's Dept., and Los Angeles Sheriff's Dept.) account for 65.6% of the decreases.