



# JUVENILE DETENTION PROFILE SURVEY

FIRST QUARTER CALENDAR YEAR 2014  
SURVEY RESULTS



## EXPLANATION OF RESULTS

The following pages contain the Juvenile Detention Profile Survey (JDPS) results for the First Quarter of Calendar Year 2014. Page 2 contains totals for major categories such as the average daily population (ADP), highest one-day population, gender, and age range of detained minors. Page 3 contains information regarding counties' ADP and rated capacity (RC) breakouts, and page 4 contains information about a wide range of juvenile detention facility issues, including mental health needs, crowding, number of bookings, and average length of stay.

***Pages 5, 6, and 7 contain trend information compiled from Calendar Year 2009 through Calendar Year 2014. The trend data is separated into Juvenile Hall related data and Camp related data.***

Please keep the following in mind when reviewing this information:

- For overall capacity, crowding (highest one-day population – the count of minors in detention on the day of each county's highest population) and ADP (the average daily detention population for the reporting period), we have complete data from all jurisdictions in the state that operate juvenile detention facilities.
- Each jurisdiction provides us with the average population, computed across all the days in the month, for each of the three months in the quarter. The weighted average across the three months is then computed for each jurisdiction (with the monthly averages weighted by the number of days in the month). The jurisdictions' ADPs are then combined to produce the state's total ADP.
- For some variables (other than ADP), we did not receive complete data from all jurisdictions. In such instances, we used statistical procedures to estimate the statewide total.
- Felony/misdemeanor, gender counts, and age-range breakouts are based upon a one-day snapshot (on the 15<sup>th</sup> day of the final month of the quarter). These values are used to determine the percentage of the population in each felony/misdemeanor, gender, and age-range category. The percentages are then applied to the total ADP to project the expected ADP in each of the felony/misdemeanor, gender, and age-range categories.
- In addition to the population breakdowns for juvenile halls and camps, the report contains like information for youth who were part of non-facility based, alternative to detention programs. Youth in that category are listed under "Other Detention." Other detention includes home supervision with and without electronic monitoring, day reporting centers, work programs, and other alternatives to detention **for which youth are credited with custody time.**
- ***Please note:***
  - In early 2011, eight regional trainings were held for county reporters and contributors to the JDPS. When interpreting the JDPS results from the second quarter of 2011 forward, please consider that the clarification of variable definitions and calculations which occurred at those trainings may explain some unanticipated differences when compared to prior quarters.
  - Each quarter, every county with juvenile detention facilities submits their data to the Board of State and Community Corrections (BSCC). While we make every effort to review data for accuracy, including contacting individual counties for clarification, the BSCC cannot be responsible for data reporting errors made at the county level.

**Board of State and Community Corrections**  
**Juvenile Detention Profile Survey - 1st Quarter, 2014**  
**Overall Capacity, Population and ADP**

<b>Overall Capacity and Population</b>							
	<b>JUVENILE HALL</b>		<b>CAMPS</b>		<b>OTHER</b>	<b>TOTAL</b>	
<b>ADP</b>	3,682.3		2,267.0		1,544.0	7,493.3	
<b>Percent of Total</b>	49.1%		30.3%		20.6%	100.0%	
<b>RC *</b>	8,261.2		4,912.0			13,173.2	
<b>High One Day</b>	4,198.0		2,414.0			6,612.0	

<b>Gender by Detention Type</b>								
	<b>JUVENILE HALL</b>		<b>CAMPS</b>		<b>OTHER</b>		<b>TOTAL</b>	
<b>GENDER</b>	<b>ADP</b>	<b>%</b>	<b>ADP</b>	<b>%</b>	<b>ADP</b>	<b>%</b>	<b>ADP</b>	<b>%</b>
<b>Male</b>	3,134.8	85.1%	2,068.1	91.2%	1,274.3	82.5%	6,477.2	86.4%
<b>Female</b>	547.5	14.9%	198.8	8.8%	269.8	17.5%	1,016.1	13.6%
<b>TOTAL</b>	3,682.3	100.0%	2,267.0	100.0%	1,544.0	100.0%	7,493.3	100.0%

<b>Disposition by Gender for Juvenile Halls</b>							
	<b>MALE</b>		<b>FEMALE</b>		<b>TOTAL</b>		
<b>DISPOSITION</b>	<b>Number</b>	<b>%</b>	<b>Number</b>	<b>%</b>	<b>Number</b>	<b>%</b>	
<b>Pre-Disposition</b>	1,706.1	54.4%	280.7	51.3%	1,986.8	54.0%	
<b>Post-Disposition</b>	1,428.7	45.6%	266.8	48.7%	1,695.5	46.0%	
<b>TOTAL</b>	3,134.8	100.0%	547.5	100.0%	3,682.3	100.0%	

<b>Disposition by Gender for Other Detention</b>							
	<b>MALE</b>		<b>FEMALE</b>		<b>TOTAL</b>		
<b>DISPOSITION</b>	<b>Number</b>	<b>%</b>	<b>Number</b>	<b>%</b>	<b>Number</b>	<b>%</b>	
<b>Pre-Disposition</b>	573.5	45.0%	126.8	47.0%	700.3	45.4%	
<b>Post-Disposition</b>	700.8	55.0%	142.9	53.0%	843.7	54.6%	
<b>TOTAL</b>	1,274.3	100.0%	269.8	100.0%	1,544.0	100.0%	

<b>Age Range by Type of Detention (One-Day Snapshot)</b>							
	<b>JUVENILE HALL</b>		<b>CAMPS</b>		<b>TOTAL</b>		
<b>AGE RANGES</b>	<b>Number</b>	<b>%</b>	<b>Number</b>	<b>%</b>	<b>Number</b>	<b>%</b>	
<b>Under 12</b>	4.0	0.1%	0.0	0.0%	4.0	0.1%	
<b>12 to 14</b>	415.0	11.1%	126.0	5.4%	541.0	8.9%	
<b>15 to 17</b>	2,922.0	78.0%	1,601.0	68.7%	4,523.0	74.4%	
<b>18 Over</b>	403.0	10.8%	605.0	25.9%	1,008.0	16.6%	
<b>TOTAL</b>	3,744.0	100.0%	2,332.0	100.0%	6,076.0	100.0%	

\* RC is Rated Capacity which is the number of beds that comply with standards set forth in Title 24, California Code of Regulations.

**County Breakout Report - 1st Quarter, 2014  
Facilities and Alternative Detention**

	<b>County</b>	<b>Rated Capacity</b>	<b>Facilities Detention</b>	<b>Other Detention</b>	<b>ADP</b>	<b>Percent of Total</b>	<b>Cumulative Percent</b>
1	Los Angeles	3,678	1,527.1	473.83	2,001.0	26.70%	26.70%
2	San Diego	1,105	505.2	167.98	673.2	8.98%	35.69%
3	Orange	743	387.2	55.49	442.7	5.91%	41.60%
4	Fresno	450	290.6	122.20	412.8	5.51%	47.10%
5	Kern	485	315.3	1.61	316.9	4.23%	51.33%
6	Santa Clara	474	190.2	118.86	309.1	4.12%	55.46%
7	Sacramento	431	176.1	124.76	300.9	4.02%	59.47%
8	San Bernardino	450	265.7	0.00	265.7	3.55%	63.02%
9	Riverside	538	219.3	45.33	264.6	3.53%	66.55%
10	Tulare	330	149.5	94.52	244.0	3.26%	69.81%
11	Contra Costa	390	225.1	0.00	225.1	3.00%	72.81%
12	Alameda	463	205.0	0.00	205.0	2.74%	75.55%
13	San Mateo	245	100.4	72.68	173.1	2.31%	77.86%
14	Merced	120	58.4	75.30	133.7	1.78%	79.64%
15	Sonoma	164	96.4	36.45	132.8	1.77%	81.41%
16	Stanislaus	218	110.5	21.71	132.3	1.76%	83.18%
17	Monterey	190	102.3	22.62	124.9	1.67%	84.85%
18	Solano	148	85.4	25.06	110.4	1.47%	86.32%
19	Santa Barbara	232	107.2	0.00	107.2	1.43%	87.75%
20	Ventura	420	97.7	0.00	97.7	1.30%	89.05%
21	San Joaquin	224	96.7	0.00	96.7	1.29%	90.34%
22	San Francisco	234	85.9	0.00	85.9	1.15%	91.49%
23	Madera	70	55.7	10.22	66.0	0.88%	92.37%
24	Kings	85	52.4	5.28	57.7	0.77%	93.14%
25	Yuba	120	50.3	0.00	50.3	0.67%	93.81%
26	El Dorado	80	35.4	5.97	41.4	0.55%	94.36%
27	Yolo	90	17.9	20.36	38.3	0.51%	94.87%
28	Shasta	78	21.0	15.79	36.8	0.49%	95.36%
29	Humboldt	44	28.9	5.86	34.8	0.46%	95.83%
30	San Luis Obispo	45	34.6	0.00	34.6	0.46%	96.29%
31	Butte	120	27.9	1.34	29.3	0.39%	96.68%
32	Napa	50	28.1	0.00	28.1	0.37%	97.06%
33	Nevada	60	19.9	7.24	27.2	0.36%	97.42%
34	Del Norte	62	26.1	0.00	26.1	0.35%	97.77%
35	Placer	78	20.9	0.00	20.9	0.28%	98.05%
36	Lake	30	10.8	8.03	18.8	0.25%	98.30%
37	Santa Cruz	42	16.2	0.00	16.2	0.22%	98.51%
38	Glenn	22	15.7	0.00	15.7	0.21%	98.72%
39	Tehama	60	13.5	0.00	13.5	0.18%	98.90%
40	Mendocino	43	13.2	0.00	13.2	0.18%	99.08%
41	Siskiyou	40	12.7	0.00	12.7	0.17%	99.25%
42	Imperial	72	12.3	0.00	12.3	0.16%	99.41%
43	San Benito	20	11.1	0.00	11.1	0.15%	99.56%
44	Lassen	40	8.0	2.00	10.0	0.13%	99.69%
45	Marin	40	5.5	3.17	8.7	0.12%	99.81%
46	Trinity	28	7.8	0.00	7.8	0.10%	99.91%
47	Inyo	14	5.9	0.00	5.9	0.08%	99.99%
48	Mariposa	4	0.3	0.34	0.7	0.01%	100.00%
49	Mono	4	0.0	0.00	0.0	0.00%	100.00%
50	Tuolumne	0	0.0	0.00	0.0	0.00%	100.00%
		<b>13,173</b>	<b>5,949.2</b>	<b>1,544.0</b>	<b>7,493.3</b>	<b>100.00%</b>	

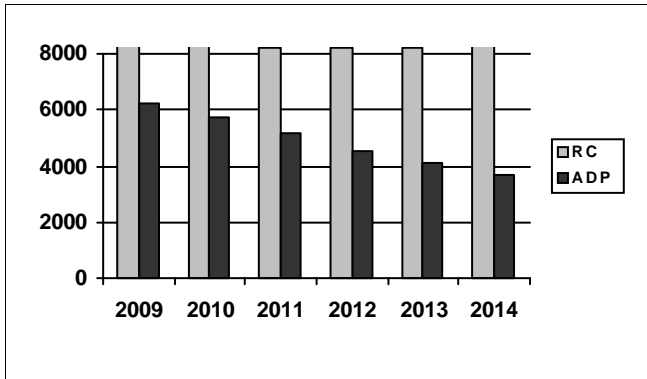
\*ADP on County Breakout Report may not equal ADP on other Summary Reports due to rounding

## Juvenile Detention Profile Survey

1st Quarter Report 2014			One Day Snapshot				Average Daily Population				
	Rated Capacity	Misdemeanor		Felony		Pre-Disposition		Post-Disposition		Total ADP	
		Male	Female	Male	Female	Male	Female	Male	Female		
<b>Juvenile Halls</b>	8,261.2	13.7%	3.9%	28.3%	3.3%	1,706.1	280.7	1,428.7	266.8	3,682.3	
<b>Camps / Ranches</b>	4,912.0	6.5%	1.4%	21.4%	2.0%			2,068.1	198.8	2,267.0	
<b>Other Juveniles in the System</b>		Male	Female	Male	Female	Male	Female	Male	Female	Total ADP	
Juveniles on home supervision with electronic monitoring		3.2%	0.8%	6.1%	1.3%	390.2	86.3	405.7	81.0	963.2	
Juveniles on home supervision without electronic monitoring		1.6%	0.6%	2.5%	0.4%	181.9	39.6	153.7	35.5	410.7	
Juveniles alternative confinement programs		0.8%	0.2%	1.9%	0.1%	1.4	1.0	141.4	26.4	170.1	
<b>Grand Totals</b>		<b>25.9%</b>	<b>6.8%</b>	<b>60.1%</b>	<b>7.1%</b>	<b>2,279.6</b>	<b>407.6</b>	<b>4,197.6</b>	<b>608.5</b>	<b>7,493.3</b>	
<b>Mental Health Snapshot</b>											
Number of open mental health cases this day									3,490.3		
Number of juveniles receiving psychotropic medication									1,334.9		
<b>Crowding</b>											
Average daily population of juveniles in other jurisdictions DUE TO LACK OF SPACE									0.0		
Number of juveniles released early DUE TO LACK OF SPACE									0.0		
Average number of days that one or more facilities in a county exceeded the Rated Capacity									0.0		
<b>Average Bookings Per Month</b>											
Number of Juvenile Hall bookings/admissions									4,581.3		
Number of bookings for weapon-related offenses									298.7		
Number of 601 bookings									15.7		
Number of 777 bookings									1,014.7		
Number of direct file {WIC 602(b) and 707(d)} bookings									40.1		
<b>Final Month of the Quarter (One-Day Snapshot)</b>											
Detained for 707b Offense									768.0		
Awaiting placement									370.0		
Awaiting transport to a camp									188.0		
Awaiting transfer to Youth Authority									49.0		
Court commitments to juvenile hall (Ricardo M)									530.0		
Found unfit per 707.01 WIC									54.0		
Direct files to Adult Court-602(b) and 707(d) WIC									279.0		
Hospitalized outside detention facility for MEDICAL CARE									0.0		
Hospitalized outside detention facility for MENTAL HEALTH CARE									4.0		
Believed to be criminal illegal aliens									114.0		
<b>Average Length of Stay</b>											
Juvenile Hall (all releases)									26.6		
Juvenile Hall to Camps									33.8		
Juvenile Hall to other out-of-home placements (i.e. group homes or foster homes)									49.7		
Juvenile Hall who were found unfit (per juvenile court)									393.7		
Juvenile Hall who were direct filings to adult court									283.3		
Camps (all releases)									127.5		
<b>Cumulative Total for the Quarter</b>											
<b>Detention Behavior</b>						Juvenile Halls	Camps / Ranches	Other Detention			
Assaults by juveniles on staff						43.0	8.0	0.0			
Escapes						2.0	34.0	12.0			
Suicide Attempts						33.0	0.0	0.0			
Suicides						0.0	0.0	0.0			

# First Quarter Report, 2014 - Juvenile Hall Data

## Rated Capacity RC and ADP for Juvenile Halls

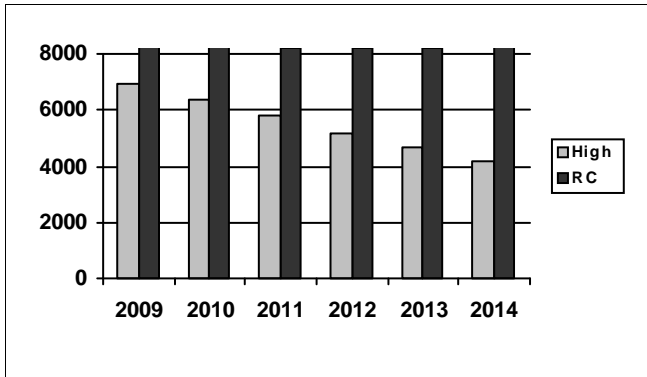


The average daily population of California Juvenile Halls has declined annually since 2006. The first quarter of 2014 shows a 47.5% decrease from the annual 2006 ADP and has housed an average of 527 fewer youth when compared to the same quarter of 2013.

Summary of Juvenile Hall ADP				
2009	2010	2011	2012	2013
6,197	5,721	5,137	4,546	4,103

2014 Summary of Juvenile Hall ADP			
Q1			Average
3,682			3,682

## Juvenile Hall Highest One-Day Population and RC

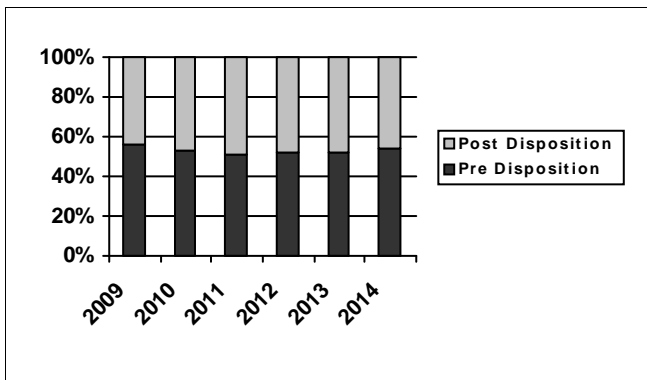


The highest one day population of California Juvenile Halls decreased again in the first quarter of 2014. The population on the date of highest population was 614 fewer than the same quarter of 2013 and is consistent with the declining ADP of Juvenile Halls.

Summary of Juvenile Hall Highest One Day				
2009	2010	2011	2012	2013
6,914	6,386	5,795	5,154	4,687

2014 Summary of Highest One-Day Population			
Q1			Average
4,198			4,198

## Pre-Disposition in Juvenile Halls



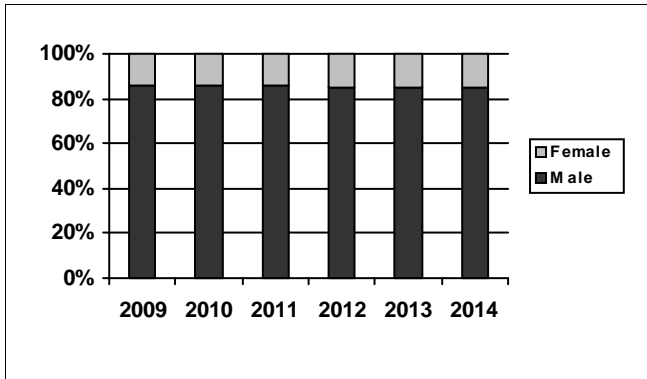
For the past three years (2011-2013), the percentage of youth in Juvenile Halls who were in pre-disposition status has remained between 51% and 52%. This percentage slightly increased in the first quarter of 2014 to 54%, which has not been seen since the first quarter of 2010.

Summary of Pre-Disposition in Juvenile Halls				
2009	2010	2011	2012	2013
56%	53%	51%	52%	52%

2014 Summary of Pre-Disposition Juvenile Halls			
Q1			Average
54%			54%

# First Quarter Report, 2014 - Juvenile Hall Data

## Gender Distribution in Juvenile Halls

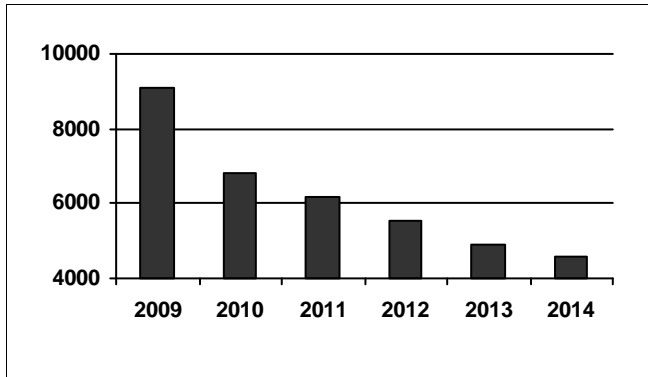


Even as the Juvenile Hall ADP continues to decline, the gender distribution continues to remain steady. Since 2007, girls have represented between 14% and 15% of the Juvenile Hall population.

Summary of Males in Juvenile Halls				
2009	2010	2011	2012	2013
86%	86%	86%	85%	85%

2014 Summary of Males in Juvenile Hall			
Q1			Average
85%			85%

## Average Number of Juveniles Booked per Month

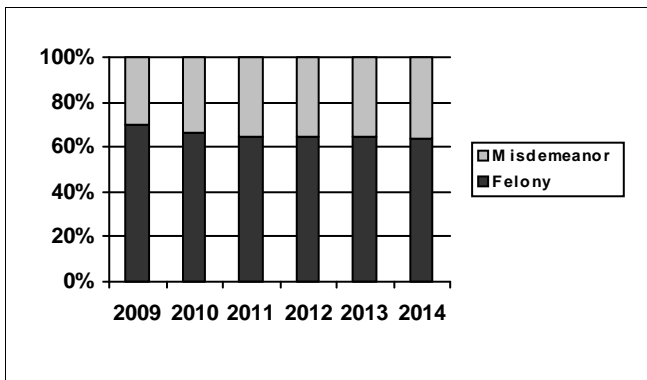


There were 102 more bookings in the first quarter of 2014 than the fourth quarter of 2013. It is noted that the increase between the first quarter and the fourth quarter of the previous year has occurred almost every year since 2002. Even with the increase between quarters, the number of bookings in the first quarter of 2014 still reflects a decrease when compared to the annual average of 2013, which has not been seen since 2007.

Summary of Juveniles Booked per Month				
2009	2010	2011	2012	2013
9,079	6,802	6,202	5,556	4,881

2014 Summary of Monthly Bookings			
Q1			Average
4,581			4,581

## Distribution of Charge in Juvenile Halls



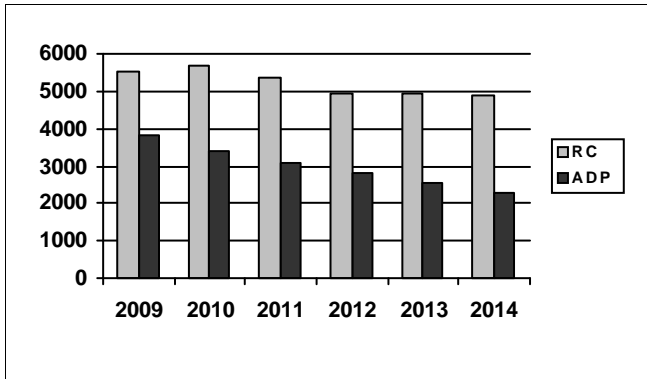
For the past three years (2011-2013), 65% of youth in Juvenile Halls were there for felony offenses. Although this percentage for the first quarter of 2014 has slightly decreased to 64%, this is consistent with the percentage in the first quarter of 2013.

Summary of Felony Charges in Juvenile Halls				
2009	2010	2011	2012	2013
70%	66%	65%	65%	65%

2014 Summary of Felony Charge Juvenile Hall			
Q1			Average
64%			64%

# First Quarter Report, 2014 - Camp Data

## RC and ADP for Camps

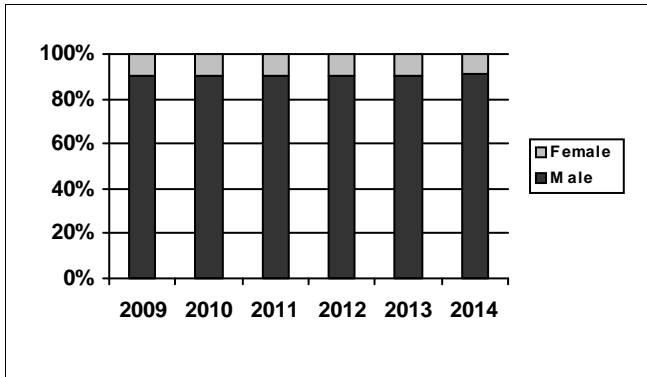


The average daily population in Camps continues to decline. Camp ADP is 170 less than the previous quarter and is far below California's Camp rated capacity.

Summary of Camp ADP				
2009	2010	2011	2012	2013
3,841	3,374	3,105	2,811	2,524

2014 Summary of Camp ADP			
Q1			Average
2,267			2,267

## Gender Distribution in Camps

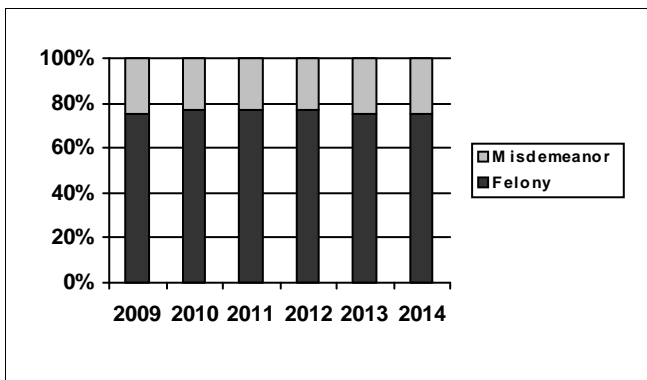


As with the Juvenile Halls, gender distribution has varied little over the years. As compared to the previous quarter (fourth quarter 2013) and the same quarter of 2013 (first quarter of 2013), the gender distribution has remained unchanged at 91% boys and 9% girls.

Summary of Males in Camps				
2009	2010	2011	2012	2013
90%	90%	90%	90%	90%

2014 Summary of Males in Camps			
Q1			Average
91%			91%

## Distribution of Charge in Camps



The percentage of felony offenders in Camp remained unchanged from the 2013 average and remains at the 2009 levels.

Summary of Felonies in Camps				
2009	2010	2011	2012	2013
75%	77%	77%	77%	75%

2014 Summary of Felonies in Camps			
Q1			Average
75%			75%



## INSTRUCTIONS FOR INTERPRETING THE SURVEY REPORT

**The Overall Capacity, Population and ADP page** is designed to present the JDPS results for the major reporting categories.

- **Capacity:** this category presents the RC in terms of the number of beds in juvenile halls and camps/ranches that meet the BSCC standards.
- **High One Day:** for each month in the quarter, each jurisdiction reports the juvenile hall and camp/ranch populations that together constituted the highest one-day count of the month.
- **Other:** this category refers to the sum of all juveniles who are receiving custody credit while on home supervision, with or without electronic monitoring, or are in alternative confinement programs.

**The County Breakout Report page** is designed to present county-specific information.

- **County comparison:** this page identifies the ADP for each county and the percent that county contributes to the total state juvenile detention population. The counties are ranked in descending order based on their percentage of the overall juvenile detention population in the state.

**The JDPS additional information page** is designed to present all the remaining JDPS results not already listed.

- **One Day Snapshot:** the percentages in this section are percentages of the total ADP for juvenile halls, camps/ranches, and other juveniles in the system.
- **Average number of days that one or more facilities in a county exceeded the RC:** this value is the result of taking all of the counties “number of days of crowding” and averaging the figures submitted by all the jurisdictions. If a jurisdiction had no crowding days, that jurisdiction was not included in the computation. In other words, the value presented indicates the typical number of crowding days per month experienced by jurisdictions that have had one or more days of crowding in the First Quarter of Calendar Year 2014.
- **Average Length of Stay:** these numbers are averages for all juveniles in each category:
  - 1) “Juvenile Hall (all releases)” is computed by first taking the mean length of stay for all juveniles released from juvenile halls in a jurisdiction. Next, all the jurisdictions’ means are averaged to produce a statewide figure.
  - 2) “Juvenile Hall to Camps [ranches]” is computed in the same fashion, but includes only those juveniles released from juvenile hall and placed in a camp or ranch.
  - 3) “Juvenile Hall to other out-of-home placements (i.e. group homes or foster homes)” presents the average length of stay for that subset of juveniles.