

JAIL PROFILE SURVEY

1997, 3rd QUARTER SURVEY RESULTS

FACILITIES STANDARDS AND OPERATIONS DIVISION

BOARD OF CORRECTIONS

STATE OF CALIFORNIA

600 Bercut Drive

Sacramento, CA 95814-0185

(916) 445-5073



JAIL PROFILE SURVEY

EXPLANATION OF RESULTS

The following pages contain the Jail Profile Survey results for the third quarter of 1997. Page 1 contains the quarterly totals based upon the monthly and quarterly data submitted to us by the participating jurisdictions. Page 2 and 3 show the trend data for variables we have been tracking for the last ten years. The remainder of this page provides explanations and clarifications of the data presented.

Page 1

- Unless otherwise noted, "projected totals" are based upon the average per day for the variable in question. For example, there were an average of 77,529 inmates per day in local jails (excluding Type I's) during the three month span of July to September 1997.
- For some variables, we did not receive data from all jurisdictions. In these cases, we project what the statewide number of felony inmates would have been if we had complete data from all the participating jurisdictions (based upon the representativeness of our sample).
- The number for "Bookings" is the average of the monthly totals for July, August and September.
- For the following variables, the numbers presented are the totals as of the mid-quarter (i.e., August 15, 1997); Pretrial Release, Early Release, 2 and 3 Strikes, Felony Warrants, Misdemeanor Warrants, Juveniles in Custody and Undocumented Aliens.
- Assaults is the total number of serious inmate assaults on staff (resulting in a crime report), statewide, during the third quarter of 1997.

Pages 2 and 3

- The data in the 10-Year Summary tables are based upon survey data which the Board has gathered since the early 1980's.
- Prior to 1995, yearly averages were reported to the Board on an annual basis. Yearly averages from 1996 on have been the average across the 12 calendar months. In 1995, the yearly figure reported is the fourth quarter average, since we do not have data from the first three quarters.



JAIL PROFILE SURVEY

CALIFORNIA COUNTY JAILS - FOR MONTHS OF JULY - SEPTEMBER 1997

Projected Total

Average Daily Population (ADP)

Highest One Day Count ^b	82,565
ADP	77,529 ^c
Holding Areas	996
Average "Under the Roof" ^d	78,525 ^e

Projected Total

Inmates from Other Jurisdictions

Inmates Housed on Federal Contract	2,957
Inmates Housed on Contract with CDC	2,019
Inmates from Other Counties on Contract	54
Inmates Awaiting Transport	1,431
Total	6,461

Categories of Inmates

Felony	54,020
Misdemeanor	23,184
Unspecified	325
Total	77,529
Non-Sentenced Males	39,268
Non-Sentenced Females	5,735
Sentenced Males	27,793
Sentenced Females	4,734
Total	77,529
Maximum Security Inmates	33,832
Medium Security Inmates	20,207
Minimum Security Inmates	22,810
Unspecified	680
Total	77,529

Special Use Beds

Medical Beds	876
Mental Beds	1,416

^a The highest one day inmate population counts in the 63 jurisdictions.
^b Unless otherwise indicated, the numbers reported in this table are an average across the days covered by the report.
^c The Average Daily Population in all jurisdictions is for the days covered by the report.
^d The term "Under the Roof" is the sum of the Average Daily Population plus the Inmates in Holding Areas.

Number of People Released Per Month Due to Lack of Space

Pretrial Release	7,990
Early Release	13,859
Total	21,850^e

Inmates with 2 and 3 Strikes

2 Strike Inmates	3,068 ^f
3 Strike Inmates	2,073 ^f
Total	5,141^e

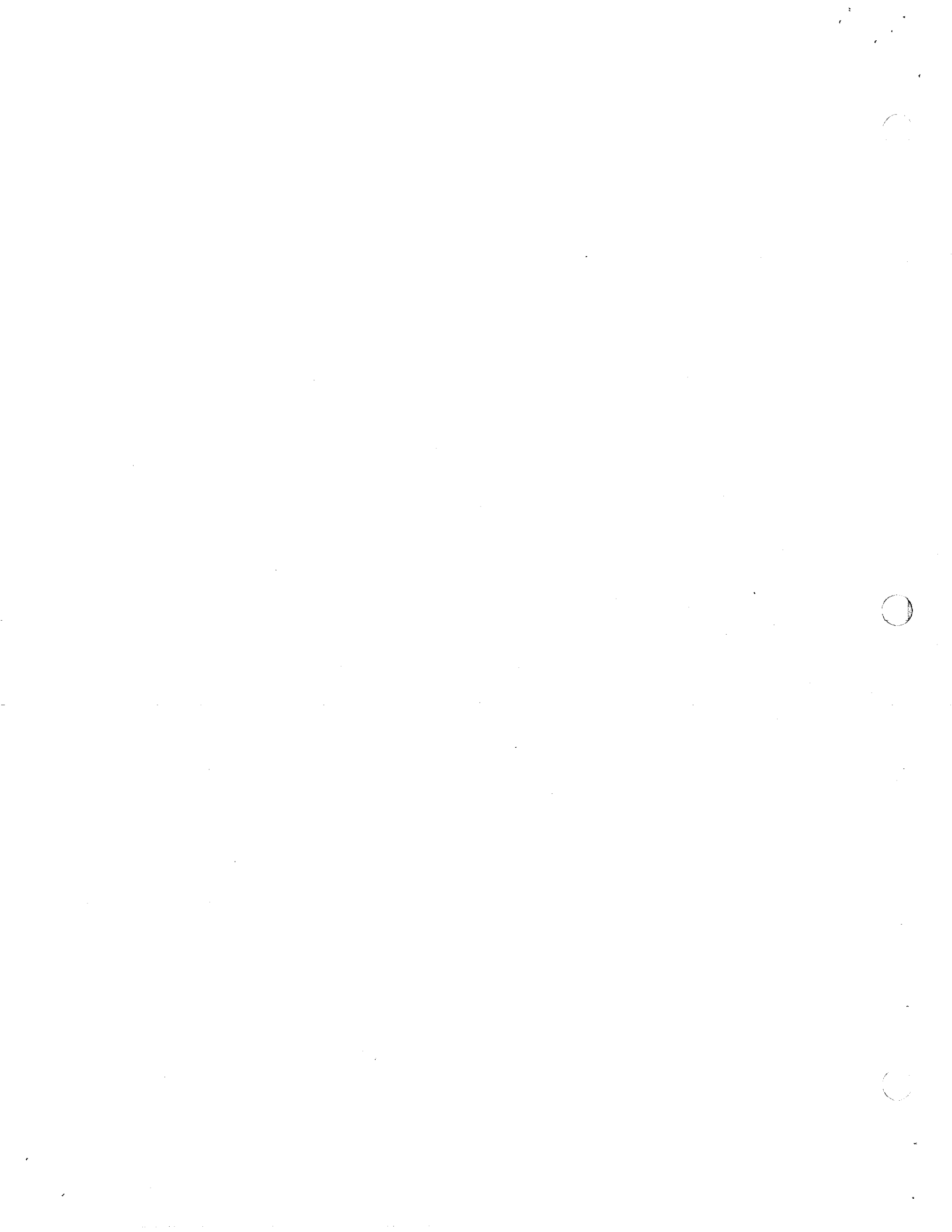
Unserviced Warrants

Felony Warrants	455,394 ^f
Misdemeanor Warrants	2,186,201 ^f
Total	2,641,596

Other Jail Profile Survey Variables

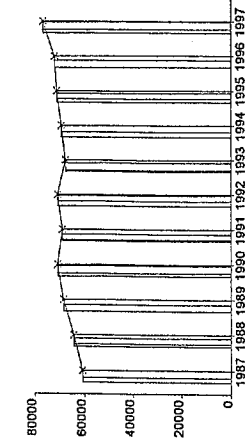
Bookings per Month	105,096 ^f
Juveniles in Custody	104 ^f
Undocumented Aliens	8,509 ^f
Assaults	236 ^f

^e Grand totals may not add up exactly to the column totals due to rounding.
^f This number is the average for the quarters represented by the span of time covered by this report.



Average Daily Population

10 Year Summary						
1987	1988	1989	1990	1991	1992	1993
60,802	64,335	68,535	70,845	68,923	70,853	67,576
				69,233	71,107	72,029



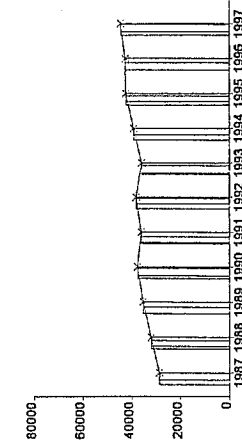
The ADP rose again this quarter (for the 7th quarter in a row). The increase per quarter over the last 6 quarters is over 1,000 inmates (from 71,117 ADP in the 1st quarter of 1996, to 77,529 in the 3rd quarter of 1997). The major factor appears to be the reduction in the number of inmates who were released early due to lack of space (6,744 fewer releases than in the 3rd quarter of 1996).

Quarterly Results

	Q1	Q2	Q3	Q4	Average
1996	71,117	71,590	72,473	72,935	72,029
1997	75,684	76,778	77,529	76,663	76,663

Non-Sentenced ADP

10 Year Summary						
1987	1988	1989	1990	1991	1992	1993
28,528	31,959	35,264	37,630	36,064	38,110	35,899
				39,122	42,237	42,541



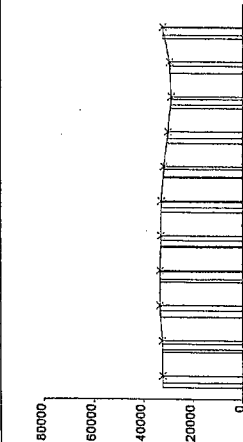
After a slight decrease in the 2nd quarter, the non-sentenced ADP is again on the rise. At 45,003 for this quarter, the non-sentenced population has risen by 2,896 in the last 4 quarters. Looking back on the last 4 quarters, the non-sentenced population has risen by 7% (equal to the overall increase in the ADP). This is a significant finding in that during the 10-year span prior to 1996, the non-sentenced population was rising at a faster rate than the overall ADP.

Quarterly Results

	Q1	Q2	Q3	Q4	Average
1996	42,812	42,724	42,107	42,520	42,541
1997	44,257	44,072	45,003	44,444	44,444

Sentenced ADP

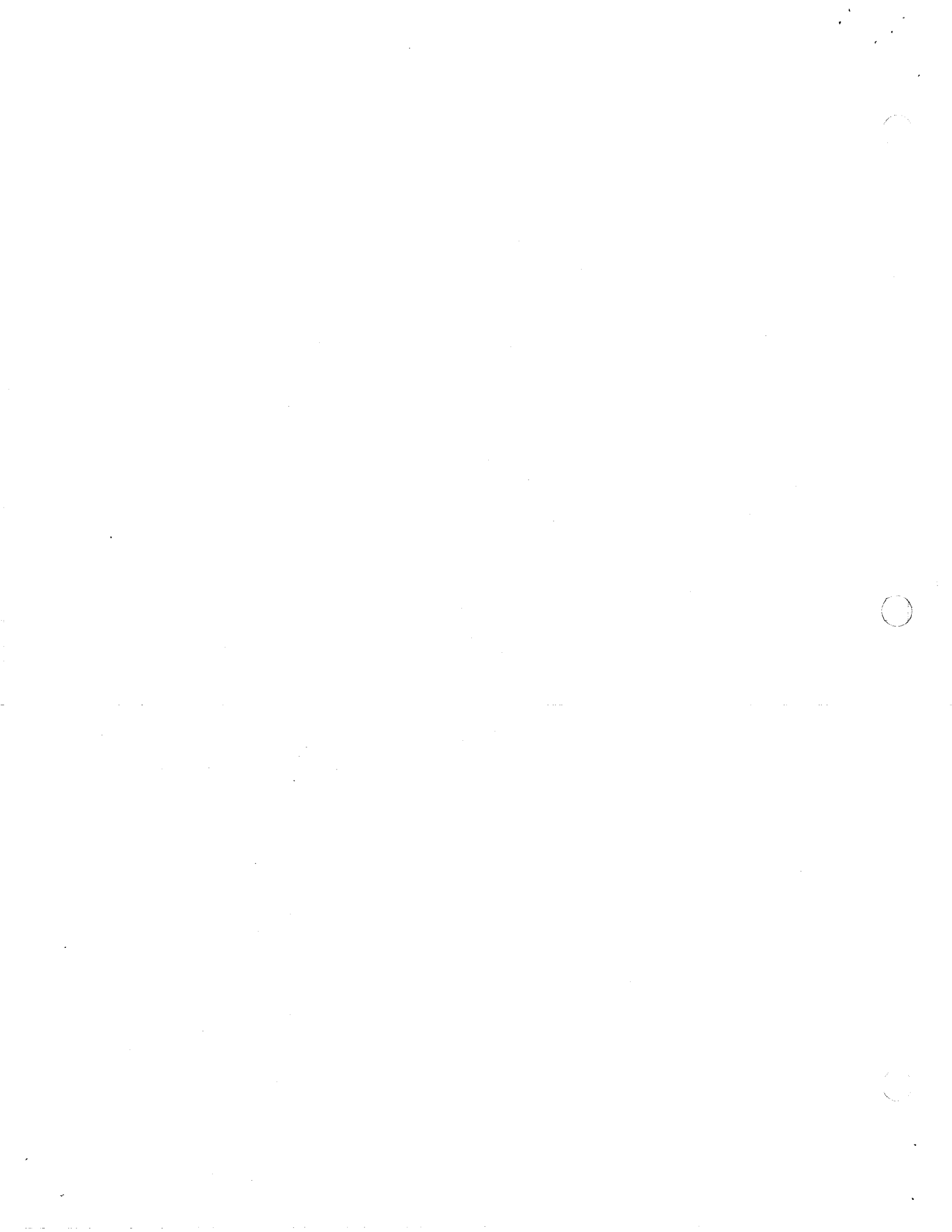
10 Year Summary						
1987	1988	1989	1990	1991	1992	1993
32,274	32,376	33,271	33,215	32,859	32,743	31,677
				30,142	28,870	29,488



There was a slight downturn in the sentenced population this quarter. Nevertheless, the sentenced population has risen 7% over the last 4 quarters. The most probable cause for this increase is the reduction in early releases due to lack of space. Over the last 4 quarters, the non-sentenced and sentenced populations have experienced the same rate of increase.

Quarterly Results

	Q1	Q2	Q3	Q4	Average
1996	28,304	28,867	30,367	30,415	29,488
1997	31,426	32,705	32,526	32,219	32,219

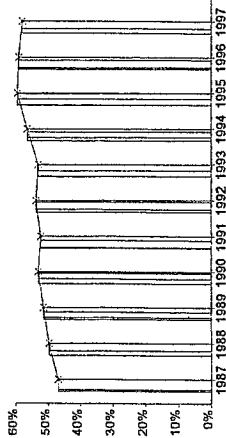


Jail Profile Survey

12/30/97

Percentage Non-Sentenced

10 Year Summary										
	1988	1989	1990	1991	1992	1993	1994	1995	1996	1996
47%	50%	51%	53%	52%	54%	53%	57%	59%	59%	59%



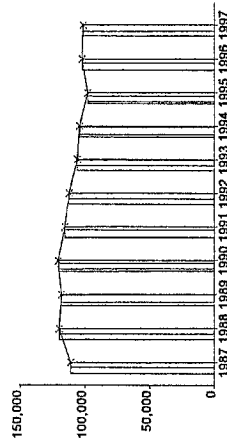
The percentage of non-sentenced inmates reached its peak at 60% in the 1st and 2nd quarters of 1996. Since then, however, the percentage of non-sentenced inmates has fluctuated between 57% and 59%, and currently stands at 58%. This finding is consistent with the data presented above that indicates that for the last 12 months the non-sentenced and sentenced populations have grown at the same rate.

Quarterly Results

	Q1	Q2	Q3	Q4	Average
1996	60	60	58	58	59
1997	58	57	58	58	58

Average Number of Persons Booked Per Month

10 Year Summary									
	1988	1989	1990	1991	1992	1993	1994	1995	1996
111,039	119,838	118,253	120,716	115,313	112,009	105,593	103,996	97,589	101,939



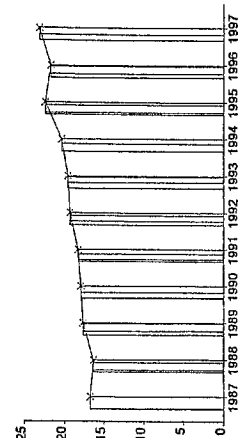
There was a large drop in the number of persons booked per month in the last quarter of 1996 (from 104,133 to 95,805). However, the number of bookings has steadily increased since then, and the 3rd quarter 1997 figure (105,096) actually exceeds the 3rd quarter 1996 results (104,133). We have not had the Jail Profile Survey in place long enough to determine the reason for these fluctuations (e.g., seasonal factors).

Quarterly Results

	Q1	Q2	Q3	Q4	Average
1996	104,385	103,433	104,133	95,805	101,939
1997	98,505	99,686	105,096	101,096	101,096

Average Length of Stay

10 Year Summary									
	1988	1989	1990	1991	1992	1993	1994	1995	1996
16.7	16.3	17.6	17.9	18.2	19.2	19.5	20.3	22.3	21.6



The Average Length of Stay reached a peak in the 4th quarter of 1996 (this was the highest value recorded since we have computed this statistic). After a slight downturn in the 1st quarter of 1997, the Average Length of Stay for the 2nd quarter of 1997 was again 23.4 days. In the 3rd quarter of 1997, the Average Length of Stay dropped somewhat to 22.6 days. Nevertheless, it is still higher than it was a year ago. If it stays at this level, the Average Length of Stay for 1997 will be the highest ever recorded for a calendar year.

Quarterly Results

	Q1	Q2	Q3	Q4	Average
1996	20.7	21.0	21.5	23.4	21.6
1997	23.1	23.4	22.6	23.0	23.0



**AVERAGE DAILY POPULATION
NON-SENTENCED/SENTENCED MALE/FEMALE
CALIFORNIA COUNTY JAILS - FOR MONTHS OF JULY - SEPTEMBER 1997**

Jurisdiction	Non-sentenced				Sentenced				Total		
	Male		Female		Male		Female				
	#	%	#	%	#	%	#	%			
1. Alameda Sheriff's Dept.	2,630	92%	228	8%	1,023	83%	210	17%	1,233	30%	4,090
2. Amador Sheriff's Dept.**	18	82%	4	18%	28	85%	5	15%	33	60%	56
3. Butte Sheriff's Dept.**	223	87%	33	13%	131	87%	19	13%	150	37%	406
4. Calaveras Sheriff's Dept.**	18	90%	2	10%	28	82%	6	18%	35	64%	54
5. Casa Oasis**	0	0%	0	0%	25	100%	0	0%	25	100%	25
6. Colusa Sheriff's Dept.**	36	88%	5	12%	30	88%	4	12%	34	46%	75
7. Contra Costa Sheriff's Dept.**	759	84%	140	16%	657	90%	71	10%	728	45%	1,627
8. Del Norte Sheriff's Dept.**	59	83%	12	17%	25	83%	5	17%	30	30%	101
9. El Dorado Sheriff's Dept.**	109	90%	12	10%	173	87%	26	13%	198	62%	319
10. Fresno Sheriff's Dept.**	1,501	90%	171	10%	415	87%	62	13%	478	22%	2,149
11. Glenn Sheriff's Dept.	38	88%	5	12%	21	89%	3	11%	23	35%	67
12. Humboldt Sheriff's Dept.**	214	89%	26	11%	29	97%	1	3%	30	11%	271
13. Imperial Sheriff's Dept.**	175	67%	87	33%	175	67%	87	33%	262	50%	523
14. Inyo Sheriff's Dept.**	26	91%	3	9%	26	76%	8	24%	34	54%	62
15. Kern Sheriff's Dept.**	1,278	87%	192	13%	426	78%	123	22%	549	27%	2,020
16. Kings Sheriff's Dept.**	188	91%	18	9%	123	88%	16	12%	139	40%	345
17. Lake Sheriff's Dept.**	76	88%	10	12%	68	75%	22	25%	90	51%	176
18. Lassen Sheriff's Dept.**	27	84%	5	16%	36	68%	17	32%	53	63%	85
19. Los Angeles Sheriff's Dept.**	10,378	85%	1,791	15%	7,612	88%	990	12%	8,602	41%	20,771
20. Madera Corrections Dept.**	160	89%	19	11%	162	92%	14	8%	176	50%	355
21. Marin Sheriff's Dept.**	202	88%	27	12%	57	86%	9	14%	66	22%	295
22. Mariposa Sheriff's Dept.	26	85%	4	15%	16	78%	4	22%	20	40%	50
23. Mendocino Sheriff's Dept.	118	90%	13	10%	89	86%	15	14%	104	44%	235
24. Merced Sheriff's Dept.**	272	89%	32	11%	172	86%	27	14%	199	40%	503
25. Modoc Sheriff's Dept.**	17	91%	2	9%	15	80%	4	20%	19	50%	37
26. Mono Sheriff's Dept.	12	88%	2	12%	15	91%	2	9%	16	53%	30
27. Monterey Sheriff's Dept.**	627	89%	74	11%	352	89%	43	11%	395	36%	1,096
28. Napa Corrections Dept.**	104	90%	11	10%	64	88%	8	12%	72	39%	187
29. Nevada Sheriff's Dept.	76	84%	14	16%	51	81%	12	19%	63	41%	154
30. Orange Sheriff's Dept.	1,951	89%	241	11%	2,296	78%	635	22%	2,931	57%	5,123
31. Placer Sheriff's Dept.**	192	90%	21	10%	205	85%	36	15%	241	53%	455
32. Plumas Sheriff's Dept.**	17	80%	4	20%	21	88%	3	12%	24	52%	45
33. Riverside Sheriff's Dept.	1,631	90%	190	10%	758	86%	121	14%	879	33%	2,701
34. Sacramento Sheriff's Dept.**	1,632	85%	299	15%	1,298	84%	246	16%	1,543	44%	3,475

**AVERAGE DAILY POPULATION
NON-SENTENCED/SENTENCED MALE/FEMALE
CALIFORNIA COUNTY JAILS - FOR MONTHS OF JULY - SEPTEMBER 1997**

Jurisdiction	Non-sentenced				Sentenced				Total		
	Male		Female		Male		Female				
	#	%	#	%	#	%	#	%			
35. San Benito Sheriff's Dept.**	44	87%	6	13%	49	92%	4	8%	53	51%	103
36. San Bernardino Sheriff's Dept.	2,865	88%	401	12%	1,192	83%	237	17%	1,428	30%	4,695
37. San Diego Probation Dept.**	0	0%	0	0%	342	100%	0	0%	342	100%	342
38. San Diego Sheriff's Dept.**	2,608	87%	383	13%	1,903	82%	404	18%	2,307	44%	5,298
39. San Diego WorkFurlough**	5	27%	13	73%	154	88%	21	12%	174	91%	192
40. San Francisco Sheriff's Dept.**	1,075	89%	134	11%	425	84%	79	16%	505	29%	1,714
41. San Joaquin Sheriff's Dept.**	504	84%	94	16%	514	84%	99	16%	613	51%	1,211
42. San Luis Obispo Sheriff's Dept.**	132	89%	16	11%	198	86%	31	14%	229	61%	377
43. San Mateo Sheriff's Dept.	313	88%	41	12%	711	91%	68	9%	779	69%	1,133
44. Santa Ana Police Dept.	261	83%	52	17%	0	0%	0	0%	0	0%	312
45. Santa Barbara Sheriff's Dept.**	387	90%	45	10%	420	78%	121	22%	541	56%	973
46. Santa Clara Dept. of Correction**	2,723	90%	308	10%	1,450	87%	207	13%	1,657	35%	4,688
47. Santa Clara Probation Dept.	0	0%	0	0%	214	86%	35	14%	249	100%	249
48. Santa Cruz Sheriff's Dept.**	212	89%	26	11%	304	88%	42	12%	346	59%	584
49. Scapular House**	0	0%	0	0%	200	88%	28	12%	228	100%	228
50. Shasta Sheriff's Dept.	187	84%	35	16%	94	81%	23	19%	116	34%	338
51. Siskiyou Sheriff's Dept.	41	87%	6	13%	31	81%	7	19%	38	45%	85
52. Solano Sheriff's Dept.**	469	86%	75	14%	270	85%	49	15%	319	37%	863
53. Sonoma Sheriff's Dept.	453	86%	73	14%	425	91%	43	9%	468	47%	994
54. Stanislaus Sheriff's Dept.**	519	89%	61	11%	401	84%	77	16%	478	45%	1,058
55. Sutter Sheriff's Dept.**	116	84%	23	16%	70	73%	26	27%	96	41%	235
56. Tehama Sheriff's Dept.**	0	0%	0	0%	172	89%	22	11%	194	100%	194
57. Trinity Sheriff's Dept.**	27	94%	2	6%	18	86%	3	14%	21	42%	50
58. Tulare Sheriff's Dept.**	490	85%	84	15%	622	89%	77	11%	699	55%	1,273
59. Tuolumne Sheriff's Dept.	40	80%	10	20%	55	82%	12	18%	67	57%	116
60. Ventura County Work Furlough**	0	0%	0	0%	147	79%	40	21%	187	100%	187
61. Ventura Sheriff's Dept.**	600	88%	80	12%	552	86%	92	14%	644	49%	1,324
62. Yolo Sheriff's Dept.**	217	83%	45	17%	75	85%	14	15%	88	25%	350
63. Yuba County Sheriff's Dept.**	191	89%	25	11%	164	89%	21	11%	185	46%	401
Statewide	39,268	87%	5,735	13%	27,793	85%	4,734	15%	32,526	42%	77,529

** Jurisdictions which have not yet been updated for the month(s) in question

Column totals may not add up to the grand total due to rounding



JAIL POPULATIONS: 3RD QUARTER '97 VERSUS 3RD QUARTER '96

1996	1997	Total Increase		Total decrease	
		72,473	77,530	5,505	(449)
Quarter 3	1997	Qtr 2, 96	Qtr 3, 97	% +/-	% of Total Increase
Los Angeles Sheriff's Dept.	18,702	20,771	2,069	11.1%	37.57%
San Bernardino Sheriff's Dept.	4,079	4,695	616	15.1%	
Santa Clara Dept. of Correction	4,149	4,688	539	13.0%	
Santa Ana Police Dept.	-	312	312		
San Diego Sheriff's Dept.	5,025	5,298	273	5.4%	
Sacramento Sheriff's Dept.	3,238	3,475	237	7.3%	
Scapular House	98	228	130	131.7%	
Alameda Sheriff's Dept.	3,975	4,090	115	2.9%	
Stanislaus Sheriff's Dept.	947	1,058	111	11.7%	
Yuba County Sheriff's Dept.	291	401	110	37.9%	
Sonoma Sheriff's Dept.	890	994	104	11.7%	
Solano Sheriff's Dept.	770	863	93	12.1%	
Riverside Sheriff's Dept.	2,068	2,149	81	3.9%	
Humboldt Sheriff's Dept.	2,634	2,701	67	2.5%	
Monterey Sheriff's Dept.	1,032	1,096	64	6.2%	
Santa Cruz Sheriff's Dept.	526	584	58	11.0%	
Tehama Sheriff's Dept.	136	194	58	42.2%	
San Luis Obispo Sheriff's Dept.	415	455	40	9.7%	
San Luis Obispo Sheriff's Dept.	340	377	37	11.0%	
Mendocino Sheriff's Dept.	200	235	35	17.4%	
Santa Barbara Sheriff's Dept.	943	973	30	3.2%	
Madara Correctional Dept.	325	355	30	9.1%	
San Joaquin Sheriff's Dept.	1,183	1,211	28	2.3%	
Trinity Sheriff's Dept.	26	50	24	92.2%	
Tulare Sheriff's Dept.	1,249	1,273	24	1.9%	
Ventura County Work-Furlough	166	187	21	12.9%	
Sutter Sheriff's Dept.	214	235	21	9.9%	
El Dorado Sheriff's Dept.	302	319	17	5.8%	
Ventura Sheriff's Dept.	1,307	1,324	17	1.3%	
Merced Sheriff's Dept.	488	503	15	3.2%	
Napa Correctional Dept.	175	187	12	7.1%	
Amarador Sheriff's Dept.	45	56	11	25.4%	
Mariposa Sheriff's Dept.	42	50	8	19.7%	
Lake Sheriff's Dept.	170	176	6	3.8%	
Contra Costa Sheriff's Dept.	1,621	1,627	6	0.3%	
Orange Sheriff's Dept.	5,118	5,123	5	0.1%	
Tuolumne Sheriff's Dept.	112	116	4	3.6%	
Colusa Sheriff's Dept.	73	73	2	3.2%	
Nevada Sheriff's Dept.	100	101	1	1.0%	
Del Norte Sheriff's Dept.	522	523	1	0.2%	
Calaveras Sheriff's Dept.	54	54	0	0.5%	
Marin Sheriff's Dept.	295	295	0	0.0%	
Casa Oaks	25	25	0	0.0%	
Stanislaus Sheriff's Dept.	86	85	(1)	-1.2%	
Plumas Sheriff's Dept.	46	45	(1)	-2.6%	
Kings Sheriff's Dept.	347	345	(2)	-0.5%	
Mono Sheriff's Dept.	32	30	(2)	-6.5%	
Glenn Sheriff's Dept.	70	67	(3)	-3.9%	
Lassen Sheriff's Dept.	88	85	(3)	-3.4%	
Shasta Sheriff's Dept.	346	338	(8)	-2.2%	
Butte Sheriff's Dept.	415	406	(9)	-2.1%	
San Diego Probation Dept.	351	342	(9)	-2.6%	
San Benito Sheriff's Dept.	113	103	(10)	-9.1%	
Inyo Sheriff's Dept.	73	62	(11)	-14.6%	
Kern Sheriff's Dept.	2,044	2,020	(24)	-1.2%	
San Diego Work-Furlough	374	350	(24)	-6.4%	
Santa Clara Probation Dept.	217	192	(25)	-11.5%	
San Mateo Sheriff's Dept.	1,175	1,133	(41)	-14.1%	
San Francisco Sheriff's Dept.	1,950	1,714	(236)	-3.5%	
Total	72,473	77,530	5,057		

1996	1997	Qtr 2, 96	Qtr 3, 97	% +/-	% of Total Increase
18,702	20,771	2,069	11.1%	37.57%	37.57%
4,079	4,695	616	15.1%		
4,149	4,688	539	13.0%		
-	312	312			
5,025	5,298	273	5.4%		
3,238	3,475	237	7.3%		
98	228	130	131.7%		
3,975	4,090	115	2.9%		
291	401	110	37.9%		
890	994	104	11.7%		
770	863	93	12.1%		
2,068	2,149	81	3.9%		
2,634	2,701	67	2.5%		
1,032	1,096	64	6.2%		
526	584	58	11.0%		
136	194	58	42.2%		
415	455	40	9.7%		
340	377	37	11.0%		
200	235	35	17.4%		
943	973	30	3.2%		
325	355	30	9.1%		
1,183	1,211	28	2.3%		
26	50	24	92.2%		
1,249	1,273	24	1.9%		
166	187	21	12.9%		
214	235	21	9.9%		
302	319	17	5.8%		
1,307	1,324	17	1.3%		
488	503	15	3.2%		
175	187	12	7.1%		
45	56	11	25.4%		
42	50	8	19.7%		
170	176	6	3.8%		
1,621	1,627	6	0.3%		
5,118	5,123	5	0.1%		
112	116	4	3.6%		
73	73	2	3.2%		
100	101	1	1.0%		
522	523	1	0.2%		
54	54	0	0.5%		
295	295	0	0.0%		
86	85	(1)	-1.2%		
46	45	(1)	-2.6%		
347	345	(2)	-0.5%		
32	30	(2)	-6.5%		
70	67	(3)	-3.9%		
88	85	(3)	-3.4%		
346	338	(8)	-2.2%		
415	406	(9)	-2.1%		
351	342	(9)	-2.6%		
113	103	(10)	-9.1%		
73	62	(11)	-14.6%		
2,044	2,020	(24)	-1.2%		
374	350	(24)	-6.4%		
217	192	(25)	-11.5%		
1,175	1,133	(41)	-14.1%		
1,950	1,714	(236)	-3.5%		
72,473	77,530	5,057			

