

JAIL PROFILE SURVEY

1997, 1st QUARTER SURVEY RESULTS

CORRECTIONS STANDARDS AND SERVICES DIVISION

BOARD OF CORRECTIONS

STATE OF CALIFORNIA
600 Bercut Drive
Sacramento, CA 95814-0185
(916) 445-5073

JAIL PROFILE SURVEY

EXPLANATION OF RESULTS

The following pages contain the Jail Profile Survey results for the first quarter of 1997. Page 1 contains the quarterly totals based upon the monthly and quarterly data submitted to us by the participating jurisdictions. Page 2 and 3 shows the trend data for variables we have been tracking for the last ten years. The remainder of this page provides explanations and clarifications of the data presented.

Page 1

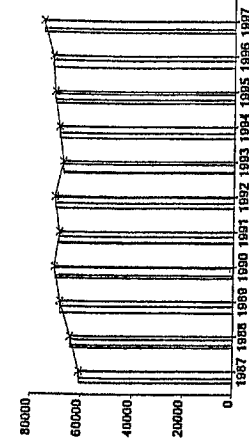
- Unless otherwise noted, "projected totals" are based upon the average per day for the variable in question. For example, there were an average of 75,706 inmates per day in local jails (excluding Type 1's) during the three month span of January to March 1997.
- For some variables, we did not receive data from all jurisdictions. We compute the percentage of the ADP which were housed in the jurisdictions that did supply us with data. For example, 95.95% of the jurisdictions indicated the number of felony inmates in their facilities. In these cases, we projected what the statewide number of felony inmates would have been if we had complete data from all the participating jurisdictions.
- The number for "Bookings" is the average of the monthly totals for January, February and March.
- For the following variables, the numbers presented are the totals as of the mid-quarter (i.e., February 15, 1997); Pretrial Release, Early Release, 2 and 3 Strikes, Felony Warrants, Misdemeanor Warrants, Juveniles in Custody and Undocumented Aliens.
- Assaults is the total number of serious inmate assaults on staff (resulting in a crime report), statewide, during the first quarter of 1997.

Pages 2 and 3

- The data in the 10 Year Summary tables are based upon survey data which the Board has gathered since the early 1980's.
- Prior to 1995, yearly averages were reported to the Board on an annual basis. Yearly averages from 1996 on have been the average across the 12 calendar months. In 1995, the yearly figure reported is the fourth quarter average, since we do not have data from the first three quarters.

Average Daily Population

10 Year Summary										
1987	1988	1989	1990	1991	1992	1993	1994	1995	1996	1997
60,802	64,335	68,535	70,845	68,923	70,853	67,576	69,233	71,107	72,029	72,029



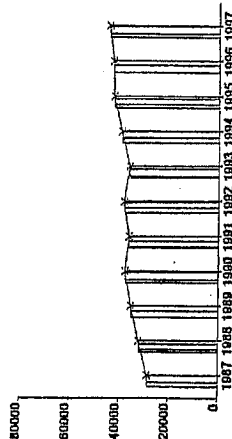
The Average Daily Population for the 1st quarter of 1997 showed the most significant increase in a decade -- a 4,589 inmate increase over the 1st quarter of 1996 (or a 6% increase). This does not accurately reflect the need for jail space. Even though the number of persons released early due to a lack of jail bed space declined for the first time since this statistic has been kept (from a high of 29,651 during the 4th quarter of 1996 to 25,689), well over 25,000 people per month are not incarcerated or are released early due to lack of jail capacity.

Quarterly Results

	Q1	Q2	Q3	Q4	Average
1996	71,117	71,590	72,473	72,935	72,029
1997	75,706	0	0	0	75,706

Non-Sentenced ADP

10 Year Summary										
1987	1988	1989	1990	1991	1992	1993	1994	1995	1996	1997
28,528	31,959	35,264	37,630	36,064	38,110	35,899	39,122	42,237	42,541	42,541



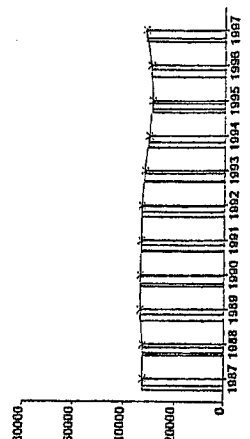
The non-sentenced population has risen steadily since the early 1980's. However, for the last three years this statistic has stabilized at approximately 59% of the total population. In the 1st quarter of 1997, there was a significant jump to 44,257. It is still too early to tell if this is the beginning of a trend or a normal fluctuation. The number of non-sentenced inmates in county jails has increased from the 1st quarter of 1996. It is important to note that at the same time, the numbers of non-sentenced inmates being released early due to a lack of jail beds is also increasing.

Quarterly Results

	Q1	Q2	Q3	Q4	Average
1996	42,812	42,724	42,107	42,520	42,541
1997	44,257	0	0	0	44,257

Sentenced ADP

10 Year Summary										
1987	1988	1989	1990	1991	1992	1993	1994	1995	1996	1997
32,274	32,376	33,271	33,215	32,859	32,743	31,677	30,142	28,870	29,488	29,488



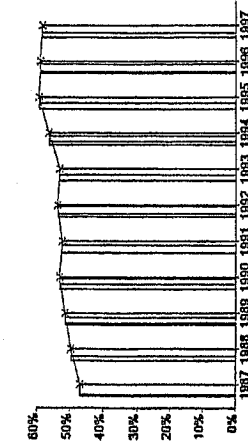
The sentenced population grew fairly rapidly between 1983 and 1987. From 1987 through 1993, this population remained relatively stable. From 1993 through 1995, the sentenced population declined. In fact, the sentenced population for 1995 was the lowest since 1984. The sentenced population for 1996 and for the 1st quarter of 1997 have increased, although not to the peak levels of 1987 through 1993.

Quarterly Results

	Q1	Q2	Q3	Q4	Average
1996	28,304	28,867	30,367	30,415	29,488
1997	31,449	0	0	0	31,449

Percentage Non-Sentenced

10 Year Summary					
	1988	1989	1990	1991	
1987	47%	50%	51%	52%	54%
1992	53%	53%	54%	57%	59%
1993	53%	54%	54%	57%	59%
1994	53%	54%	54%	57%	59%
1995	53%	54%	54%	57%	59%
1996	53%	54%	54%	57%	59%



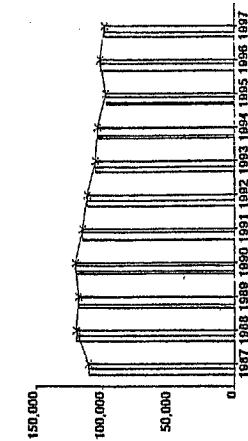
The percentage of jail population which is non-sentenced increased gradually from the mid-1980's until 1995. From 1995 until the 1st quarter of 1997, this percentage has remained relatively stable. This percentage is significant because it relates to the number of higher security inmates in the current population.

Quarterly Results

	Q1	Q2	Q3	Q4	Average
1996	60	60	58	58	59
1997	58	0	0	0	58

Average Number of Persons Booked

10 Year Summary					
	1988	1989	1990	1991	
1987	111,039	119,838	118,253	120,716	115,313
1992	112,009	105,593	103,996	97,589	101,939
1993	105,593	103,996	97,589	101,939	101,939
1994	103,996	97,589	101,939	101,939	101,939
1995	97,589	101,939	101,939	101,939	101,939
1996	101,939	101,939	101,939	101,939	101,939



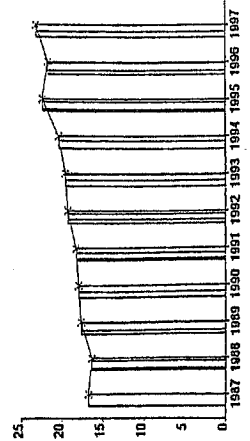
The number of persons booked declined from 1990 through 1995. In 1996, the number of persons booked increased slightly though the first three quarters and then dropped significantly in the 4th quarter. The 1st quarter of 1997 is up from the last quarter of 1996, but down significantly from the 1996 monthly average. It is unclear whether this decline is indicative of a trend or simply a normal fluctuation. Continued data gathering will be necessary to determine if there has been a change. (NOTE: This data element represents "average number of persons booked per month.")

Quarterly Results

	Q1	Q2	Q3	Q4	Average
1996	104,385	103,433	104,133	95,805	101,939
1997	98,505	0	0	0	98,505

Average Length of Stay

10 Year Summary					
	1988	1989	1990	1991	
1987	16.7	16.3	17.6	18.2	19.2
1992	19.2	19.2	19.5	20.3	21.6
1993	19.5	20.3	22.3	21.6	21.6
1994	20.3	22.3	21.6	21.6	21.6
1995	22.3	21.6	21.6	21.6	21.6
1996	21.6	21.6	21.6	21.6	21.6



After a surprising decrease in the Average Length of Stay (ALS) during the first three quarters of 1996, the ALS has returned to its upward trend. (It is important to note that this data element averages the length of stay for all inmates booked into county jails, including those who are immediately released through bail, own recognizance. The ALS of inmates who are still in county jails after arraignment is significantly higher.) It appears that over time, the ALS will continue to increase.

Quarterly Results

	Q1	Q2	Q3	Q4	Average
1996	20.7	21.0	21.5	23.4	21.6
1997	23.1	0.0	0.0	0.0	23.1

**AVERAGE DAILY POPULATION
NON-SENTENCED/SENTENCED MALE/FEMALE
CALIFORNIA COUNTY JAILS - FOR MONTHS OF JANUARY - MARCH 1997**

Jurisdiction	Non-sentenced				Sentenced				Total			
	Male		Female		Male		Female					
	#	%	#	%	#	%	#	%				
1. Alameda Sheriff's Dept.	2,763	92%	225	8%	2,988	72%	971	85%	1,140	28%	4,128	
2. Amador Sheriff's Dept.	19	87%	3	13%	22	45%	23	84%	4	16%	27	49
3. Butte Sheriff's Dept.	206	88%	28	12%	234	56%	154	85%	27	15%	182	416
4. Calaveras Sheriff's Dept.	18	87%	3	13%	21	41%	24	82%	5	18%	29	50
5. Colusa Sheriff's Dept.	26	90%	3	10%	29	44%	33	90%	4	10%	36	65
6. Contra Costa Sheriff's Dept.	797	86%	127	14%	925	58%	608	90%	66	10%	674	1,599
7. Del Norte Sheriff's Dept.	25	82%	6	18%	30	32%	58	88%	8	12%	66	96
8. El Dorado Sheriff's Dept.	64	88%	8	12%	72	24%	209	90%	24	10%	233	306
9. Fresno Sheriff's Dept.	1,546	90%	169	10%	1,715	80%	361	86%	57	14%	418	2,133
10. Glenn Sheriff's Dept.**	45	93%	3	7%	49	63%	25	89%	3	11%	28	77
11. Humboldt Sheriff's Dept.	199	88%	28	12%	227	85%	39	95%	2	5%	41	268
12. Imperial Sheriff's Dept.	166	66%	87	34%	252	51%	164	67%	80	33%	244	496
13. Inyo Sheriff's Dept.	23	91%	2	9%	25	41%	31	87%	5	13%	36	61
14. Kern Sheriff's Dept.	1,305	87%	201	13%	1,506	73%	434	78%	120	22%	554	2,059
15. Kings Sheriff's Dept.	162	91%	17	9%	179	52%	142	87%	21	13%	162	342
16. Lake Sheriff's Dept.	96	93%	8	7%	103	51%	77	79%	21	21%	98	201
17. Lassen Sheriff's Dept.	28	92%	2	8%	30	38%	38	76%	12	24%	50	80
18. Los Angeles Sheriff's Dept.	10,739	90%	1,238	10%	11,978	58%	7,730	90%	834	10%	8,564	20,541
19. Madera Corrections Dept.**	154	86%	24	14%	178	55%	135	93%	10	7%	146	324
20. Marin Sheriff's Dept.	195	86%	30	14%	225	77%	55	81%	13	19%	68	293
21. Mariposa Sheriff's Dept.	19	86%	3	14%	22	54%	16	84%	3	16%	19	41
22. Mendocino Sheriff's Dept.	126	89%	15	11%	141	60%	84	88%	11	12%	95	236
23. Merced Sheriff's Dept.**	291	91%	30	9%	320	63%	165	89%	20	11%	185	505
24. Modoc Sheriff's Dept.	7	79%	2	21%	9	29%	20	86%	3	14%	23	32
25. Mono Sheriff's Dept.	12	96%	1	4%	13	38%	17	85%	3	15%	20	33
26. Monterey Sheriff's Dept.	631	89%	80	11%	710	67%	304	86%	48	14%	352	1,062
27. Napa Corrections Dept.	104	92%	9	8%	113	60%	64	85%	11	15%	75	188
28. Nevada Sheriff's Dept.	75	92%	6	8%	81	55%	58	86%	9	14%	67	148
29. Orange Sheriff's Dept.	1,848	89%	228	11%	2,076	41%	2,586	86%	411	14%	2,997	5,073
30. Placer Sheriff's Dept.	174	91%	18	9%	193	46%	191	85%	34	15%	225	418
31. Plumas Sheriff's Dept.	15	90%	2	10%	17	42%	19	85%	3	15%	23	39
32. Riverside Sheriff's Dept.	1,624	89%	193	11%	1,817	69%	702	87%	102	13%	804	2,621
33. Sacramento Sheriff's Dept.	1,718	88%	232	12%	1,950	57%	1,221	83%	245	17%	1,466	3,415
34. San Benito Sheriff's Dept.	44	89%	5	11%	49	49%	48	92%	4	8%	52	101

**AVERAGE DAILY POPULATION
NON-SENTENCED/SENTENCED MALE/FEMALE
CALIFORNIA COUNTY JAILS - FOR MONTHS OF JANUARY - MARCH 1997**

Jurisdiction	Non-sentenced				Sentenced				Total
	Male		Female		Male		Female		
	#	%	#	%	#	%	#	%	
35. San Bernardino Sheriff's Dept.	2,850	88%	396	12%	1,031	84%	191	16%	4,468
36. San Diego Probation Dept.	0	0%	0	0%	302	100%	0	0%	302
37. San Diego Sheriff's Dept.	2,690	87%	408	13%	1,870	84%	350	16%	5,318
38. San Diego Work/Furlough	0	0%	0	0%	190	93%	14	7%	204
39. San Francisco Sheriff's Dept.	1,344	91%	133	9%	445	84%	83	16%	2,005
40. San Joaquin Sheriff's Dept.	497	87%	77	13%	490	83%	104	17%	1,168
41. San Luis Obispo Sheriff's Dept.	112	90%	12	10%	204	87%	31	13%	359
42. San Mateo Sheriff's Dept.	317	89%	40	11%	690	89%	89	11%	1,136
43. Santa Barbara Sheriff's Dept.	328	86%	54	14%	416	88%	59	12%	857
44. Santa Clara Dept. of Correction	2,495	91%	253	9%	1,364	87%	209	13%	4,321
45. Santa Clara Probation Dept.	0	0%	0	0%	221	96%	10	4%	231
46. Santa Cruz Sheriff's Dept.	212	90%	23	10%	325	88%	45	12%	605
47. Scapular House	0	0%	0	0%	100	87%	15	13%	116
48. Shasta Sheriff's Dept.	219	89%	28	11%	97	87%	14	13%	358
49. Siskiyou Sheriff's Dept.	36	80%	9	20%	35	84%	7	16%	87
50. Solano Sheriff's Dept.	441	87%	65	13%	234	86%	39	14%	779
51. Sonoma Sheriff's Dept.	457	87%	68	13%	366	94%	24	6%	915
52. Stanislaus Sheriff's Dept.	430	88%	60	12%	443	84%	83	16%	1,016
53. Sutter Sheriff's Dept.	106	87%	17	13%	58	79%	16	21%	197
54. Tehama Sheriff's Dept.	58	89%	7	11%	84	90%	10	10%	159
55. Trinity Sheriff's Dept.	17	94%	1	6%	17	90%	2	10%	37
56. Tulare Sheriff's Dept.	472	86%	74	14%	641	89%	83	11%	1,270
57. Tuolumne Sheriff's Dept.	49	85%	9	15%	47	85%	8	15%	113
58. Ventura County Work Furlough	0	0%	0	0%	150	84%	28	16%	178
59. Ventura Sheriff's Dept.	584	91%	61	9%	597	87%	90	13%	1,331
60. Yolo Sheriff's Dept.	160	66%	83	34%	96	83%	19	17%	359
61. Yuba County Sheriff's Dept.	186	90%	20	10%	57	88%	8	12%	271
Statewide	39,323	89%	4,935	11%	27,379	87%	4,022	13%	75,659

** Jurisdictions which have not yet been updated for the month(s) in question
Column totals may not add up to the grand total due to rounding