

JUVENILE DETENTION PROFILE SURVEY



**THIRD QUARTER
2011**

Corrections Standards Authority
Facilities Standards and Operations Division
600 Bercut Drive
Sacramento CA 95811
(916) 445-5073
www.csa.ca.gov

JUVENILE DETENTION PROFILE SURVEY

EXPLANATION OF RESULTS

The following link titles contain the Juvenile Detention Profile Survey results for the Third Quarter of Calendar Year 2011. **Capacity, Population and ADP Breakout** contains totals for major categories such as Highest One-Day Population, Average Daily Population (ADP), gender, and the age range of detained minors. **Breakout of Juveniles in Detention** contains information regarding counties' ADP and Rated Capacity (RC) breakouts and **Summary of Survey Results** contains information about a wide range of juvenile detention facility issues including crowding, mental health needs, average length of stay, and number of bookings.

Juvenile Hall Data – Part 1 & 2, and Camp Data contains trend information compiled from 2006 through the third quarter of calendar year 2011. The trend data is separated into Juvenile Hall related data and Camp related data.

Please keep the following in mind when reviewing this information:

- For Overall Capacity, Crowding (highest one-day population-the count of minors in detention on the day of each county's highest population) and ADP (the average daily detention population for the reporting period), we have complete data from all jurisdictions in the state that operate juvenile detention facilities.
- Each jurisdiction provides us with the average population, computed across all the days in the month, for each of the three months in the quarter. The weighted average across the three months is then computed for each jurisdiction (with the monthly averages weighted by the number of days in the month). The jurisdictions ADPs are then combined to produce the state's total ADP.
- For some variables (other than ADP), we did not receive complete data from all jurisdictions. In such instances, we used statistical procedures to estimate the statewide total.
- Felony/misdemeanor, gender counts, and age-range breakouts are based upon a one-day snapshot (on the 15th day of the final month of the quarter). These values are used to determine the percentage of the population in each felony/misdemeanor, gender, and age category. The percentages are then applied to the Total ADP to project the expected ADP in each of the felony/misdemeanor, gender, and age-range categories.
- In addition to the population breakdowns for juvenile halls and camps, the report contains like information for youth who were part of non-facility based, alternative to detention programs. Youth in that category are listed under "Other Detention". Other detention includes home supervision with and without electronic monitoring, day reporting centers, work programs and other alternatives to detention **for which youth are credited with custody time.**
- **Please note:**
 - In early 2011, eight regional trainings were held for county reporters and contributors to the JDPS. When interpreting the JDPS results from the 2nd quarter of 2011 forward, please consider that the clarification of variable definitions and calculations which occurred at those trainings may explain some unanticipated differences when compared to prior quarters.
 - Each quarter, every county with juvenile detention facilities submits their data to the CSA. While we make every effort to review data for accuracy, including contacting individual counties for clarification, CSA cannot be responsible for data reporting errors made at the county level.

**California Corrections Standards Authority
 Juvenile Detention Profile Survey - 3rd Quarter, 2011
 Overall Capacity, Population and ADP**

Overall Capacity and Population							
	JUVENILE HALL		CAMPS		OTHER	TOTAL	
ADP	5,069.7		3,083.7		1,764.4	9,917.8	
Percent of Total	51.1%		31.1%		17.8%	100.0%	
RC *	8,223.4		5,257.9			13,481.3	
High One Day	5,693.0		3,160.0			8,853.0	

Gender by Detention Type								
	JUVENILE HALL		CAMPS		OTHER		TOTAL	
GENDER	ADP	%	ADP	%	ADP	%	ADP	%
Male	4,354.6	85.9%	2,778.5	90.1%	1,437.2	81.5%	8,570.3	86.4%
Female	715.0	14.1%	305.2	9.9%	327.3	18.5%	1,347.5	13.6%
TOTAL	5,069.7	100.0%	3,083.7	100.0%	1,764.4	100.0%	9,917.8	100.0%

Disposition by Gender for Juvenile Halls							
	MALE		FEMALE		TOTAL		
DISPOSITION	Number	%	Number	%	Number	%	
Pre-Disposition	2,174.9	49.9%	386.6	54.1%	2,561.5	50.5%	
Post-Disposition	2,179.7	50.1%	328.5	45.9%	2,508.2	49.5%	
TOTAL	4,354.6	100.0%	715.0	100.0%	5,069.7	100.0%	

Disposition by Gender for Other Detention							
	MALE		FEMALE		TOTAL		
DISPOSITION	Number	%	Number	%	Number	%	
Pre-Disposition	585.0	40.7%	134.7	41.2%	719.7	40.8%	
Post-Disposition	852.2	59.3%	192.6	58.8%	1,044.7	59.2%	
TOTAL	1,437.2	100.0%	327.3	100.0%	1,764.4	100.0%	

Age Range by Type of Detention (One-Day Snapshot)							
	JUVENILE HALL		CAMPS		TOTAL		
AGE RANGES	Number	%	Number	%	Number	%	
Under 12	8.3	0.2%	0.0	0.0%	8.3	0.1%	
12 to 14	503.4	10.0%	168.0	5.5%	671.4	8.3%	
15 to 17	4,007.8	80.0%	2,337.0	76.2%	6,344.8	78.6%	
18 _Over	490.0	9.8%	561.0	18.3%	1,051.0	13.0%	
TOTAL	5,009.5	100.0%	3,066.0	100.0%	8,075.5	100.0%	

* RC is Rated Capacity which is the number of beds that comply with standards set forth in Title 24, California Code of Regulations.

**County Breakout Report - 3rd Quarter, 2011
Facilities and Alternative Detention**

	County	Rated Capacity	Facilities Detention	Other Detention	ADP	Percent of Total	Cumulative Percent
1	Los Angeles	4,144	2,320.5	377.93	2,698.4	27.21%	27.21%
2	San Diego	1,105	751.8	221.13	973.0	9.81%	37.02%
3	Orange	797	598.4	77.55	676.0	6.82%	43.83%
4	Fresno	450	318.6	122.39	441.0	4.45%	48.28%
5	Santa Clara	538	235.7	178.91	414.6	4.18%	52.46%
6	Kern	475	378.0	3.32	381.3	3.84%	56.31%
7	San Bernardino	420	376.2	0.00	376.2	3.79%	60.10%
8	Riverside	582	326.0	16.46	342.4	3.45%	63.55%
9	Sacramento	270	191.4	134.99	326.4	3.29%	66.84%
10	Alameda	463	267.8	36.07	303.9	3.06%	69.91%
11	San Mateo	274	172.5	105.99	278.5	2.81%	72.71%
12	Tulare	330	173.0	89.24	262.2	2.64%	75.36%
13	Contra Costa	356	236.0	0.00	236.0	2.38%	77.74%
14	San Francisco	234	108.6	112.18	220.8	2.23%	79.96%
15	Santa Barbara	272	176.3	0.00	176.3	1.78%	81.74%
16	Stanislaus	158	136.4	31.79	168.2	1.70%	83.44%
17	Monterey	190	127.2	32.05	159.2	1.61%	85.04%
18	Ventura	295	157.2	0.00	157.2	1.58%	86.63%
19	Sonoma	188	98.8	53.44	152.3	1.54%	88.16%
20	San Joaquin	224	150.0	0.00	150.0	1.51%	89.67%
21	Merced	120	89.8	44.85	134.6	1.36%	91.03%
22	Solano	148	91.9	9.20	101.1	1.02%	92.05%
23	Kings	209	89.6	0.00	89.6	0.90%	92.95%
24	Madera	85	51.1	12.03	63.2	0.64%	93.59%
25	Yolo	90	40.6	17.54	58.1	0.59%	94.18%
26	El Dorado	80	41.7	13.62	55.3	0.56%	94.74%
27	Butte	60	48.9	3.32	52.2	0.53%	95.26%
28	Placer	58	29.3	19.44	48.7	0.49%	95.75%
29	Yuba	120	47.5	0.00	47.5	0.48%	96.23%
30	Shasta	56	25.3	10.99	36.3	0.37%	96.60%
31	Humboldt	44	26.2	9.91	36.1	0.36%	96.96%
32	Del Norte	62	34.8	0.00	34.8	0.35%	97.31%
33	Napa	50	31.5	3.13	34.6	0.35%	97.66%
34	San Luis Obispo	45	30.5	0.00	30.5	0.31%	97.97%
35	Nevada	60	17.0	10.67	27.7	0.28%	98.25%
36	Santa Cruz	42	18.0	7.46	25.5	0.26%	98.51%
37	Mendocino	43	22.4	0.00	22.4	0.23%	98.73%
38	Tehama	40	19.3	0.00	19.3	0.19%	98.93%
39	Lake	40	13.0	5.65	18.7	0.19%	99.11%
40	Imperial	72	14.9	0.00	14.9	0.15%	99.26%
41	Siskiyou	20	14.0	0.00	14.0	0.14%	99.41%
42	Lassen	40	11.0	2.70	13.7	0.14%	99.54%
43	Marin	40	12.3	0.47	12.8	0.13%	99.67%
44	San Benito	20	10.6	0.00	10.6	0.11%	99.78%
45	Glenn	22	10.0	0.00	10.0	0.10%	99.88%
46	Trinity	28	6.0	0.00	6.0	0.06%	99.94%
47	Inyo	14	5.7	0.00	5.7	0.06%	100.00%
48	Mariposa	4	0.2	0.00	0.2	0.00%	100.00%
49	Mono	4	0.0	0.00	0.0	0.00%	100.00%
50	Sierra	0	0.0	0.00	0.0	0.00%	100.00%
51	Tuolumne	0	0.0	0.00	0.0	0.00%	100.00%
		13,481	8,153.4	1,764.4	9,917.8	100.00%	

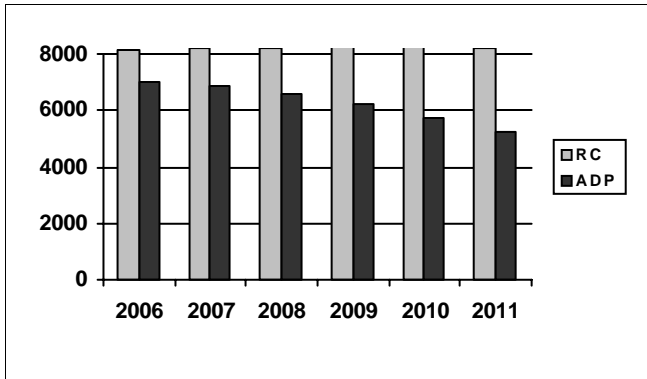
*ADP on County Breakout Report may not equal ADP on other Summary Reports due to rounding

Juvenile Detention Profile Survey

3rd Quarter Report 2011	Rated Capacity	One Day Snapshot				Average Daily Population				
		Misdemeanor		Felony		Pre-Disposition		Post-Disposition		Total ADP
		Male	Female	Male	Female	Male	Female	Male	Female	
Juvenile Halls	8,223.4	13.6%	4.1%	30.1%	3.2%	2,174.9	386.6	2,179.7	328.5	5,069.7
Camps / Ranches	5,257.9	6.1%	1.1%	22.7%	2.2%			2,778.5	305.2	3,083.7
Other Juveniles in the System		Male	Female	Male	Female	Male	Female	Male	Female	Total ADP
Juveniles on home supervision with electronic monitoring		3.0%	0.7%	4.7%	1.1%	382.8	79.2	440.7	96.4	999.0
Juveniles on home supervision without electronic monitoring		1.7%	0.6%	2.9%	0.6%	199.6	54.4	265.9	73.8	593.7
Juveniles alternative confinement programs		0.6%	0.1%	1.0%	0.1%	2.7	1.0	145.6	22.4	171.7
Grand Totals		25.0%	6.6%	61.2%	7.2%	2,759.9	521.3	5,810.4	826.2	9,917.8
Mental Health Snapshot										
Number of open mental health cases this day									3,129.8	
Number of juveniles receiving psychotropic medication									1,239.6	
Crowding										
Average daily population of juveniles in other jurisdictions DUE TO LACK OF SPACE									0.0	
Number of juveniles released early DUE TO LACK OF SPACE									38.9	
Average number of days that one or more facilities in a county exceeded the Rated Capacity									7.0	
Average Bookings Per Month										
Number of Juvenile Hall bookings/admissions									6,032.1	
Number of bookings for weapon-related offenses									423.0	
Number of 601 bookings									18.3	
Number of 777 bookings									1,290.1	
Number of direct file {WIC 602(b) and 707(d)} bookings									62.1	
Final Month of the Quarter (One-Day Snapshot)										
Detained for 707b Offense									1,114.0	
Awaiting placement									409.7	
Awaiting transport to a camp									393.2	
Awaiting transfer to Youth Authority									51.0	
Court commitments to juvenile hall (Ricardo M)									620.0	
Found unfit per 707.01 WIC									91.7	
Direct files to Adult Court-602(b) and 707(d) WIC									370.9	
Hospitalized outside detention facility for MEDICAL CARE									10.0	
Hospitalized outside detention facility for MENTAL HEALTH CARE									6.0	
Believed to be criminal illegal aliens									100.8	
Average Length of Stay										
Juvenile Hall (all releases)									24.5	
Juvenile Hall to Camps									67.5	
Juvenile Hall to other out-of-home placements (i.e. group homes or foster homes)									52.6	
Juvenile Hall who were found unfit (per juvenile court)									393.8	
Juvenile Hall who were direct filings to adult court									246.7	
Camps (all releases)									146.6	
Cumulative Total for the Quarter										
Detention Behavior						Juvenile Halls		Camps / Ranches		Other Detention
Assaults by juveniles on staff						33.1		7.0		0.0
Escapes						4.0		82.0		2.0
Suicide Attempts						48.0		3.0		0.0
Suicides						0.0		0.0		0.0

Third Quarter Report, 2011 - Juvenile Hall Data

Rated Capacity RC and ADP for Juvenile Halls

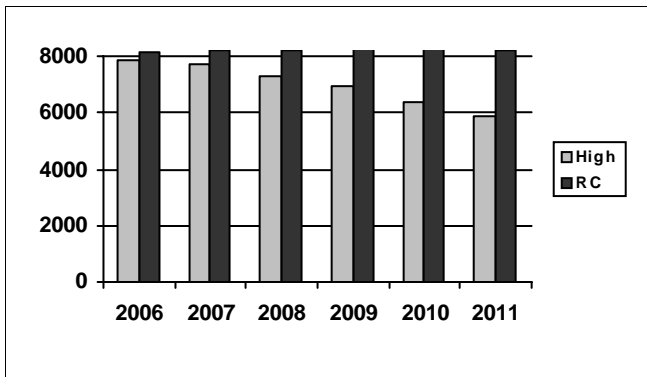


Juvenile Hall population, which increased by 500 between 2002 and 2006, continues the decline that began in 2007. Third quarter ADP is nearly 2,000 fewer than 2006.

Summary of Juvenile Hall ADP				
2006	2007	2008	2009	2010
7,017	6,858	6,614	6,197	5,721

2011 Summary of Juvenile Hall ADP			
Q1	Q2	Q3	Average
5,261	5,325	5,070	5,218

Juvenile Hall Highest One-Day Population and RC

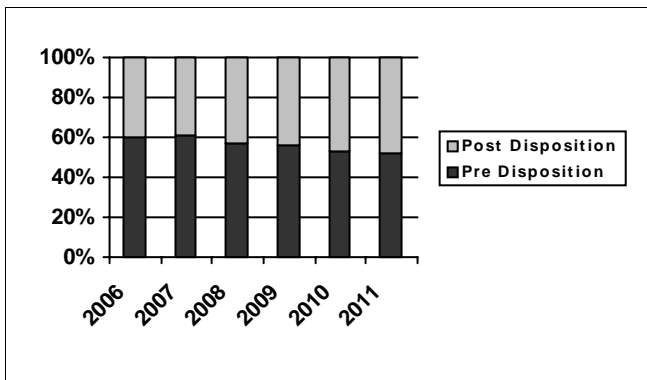


Reflecting the reduction seen in ADP, high day population continues to fall. This increases the distance between the population of the highest day in detention and the rated capacity at the facilities.

Summary of Juvenile Hall Highest One Day				
2006	2007	2008	2009	2010
7,837	7,686	7,317	6,914	6,386

2011 Summary of Highest One-Day Population			
Q1	Q2	Q3	Average
5,933	6,019	5,693	5,881

Pre-Disposition in Juvenile Halls



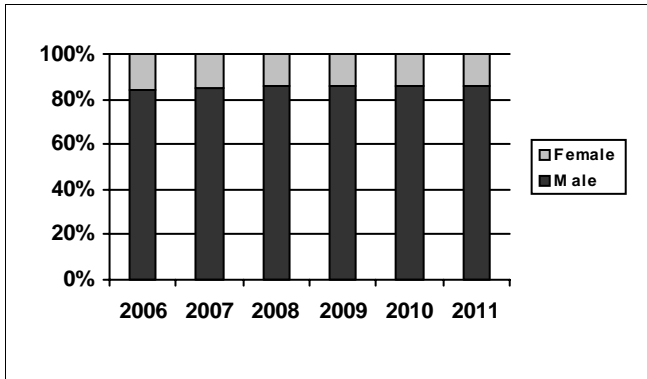
The percentage of pre-disposition juveniles peaked in 2007 with 61% of youth in a pre-disposition status. The third quarter percentage of 51% is the lowest in the history of the survey.

Summary of Pre-Disposition in Juvenile Halls				
2006	2007	2008	2009	2010
60%	61%	57%	56%	53%

2011 Summary of Pre-Disposition Juvenile Halls			
Q1	Q2	Q3	Average
52%	52%	51%	52%

Third Quarter Report, 2011 - Juvenile Hall Data

Gender Distribution in Juvenile Halls



The gender distribution in juvenile halls remains unchanged.

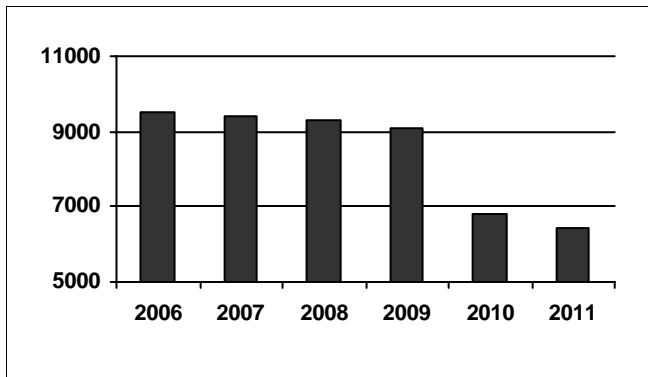
Summary of Males in Juvenile Halls

2006	2007	2008	2009	2010	2011
84%	85%	86%	86%	86%	86%

2011 Summary of Males in Juvenile Hall

Q1	Q2	Q3	Average
86%	86%	86%	86%

Average Number of Juveniles Booked per Month



The use of objective risk instruments at detention (and local law enforcement's awareness of them) is one of the contributing factors to the declining number of juvenile bookings. Another factor is the decreasing number of bookings for probation violations (777W&I).

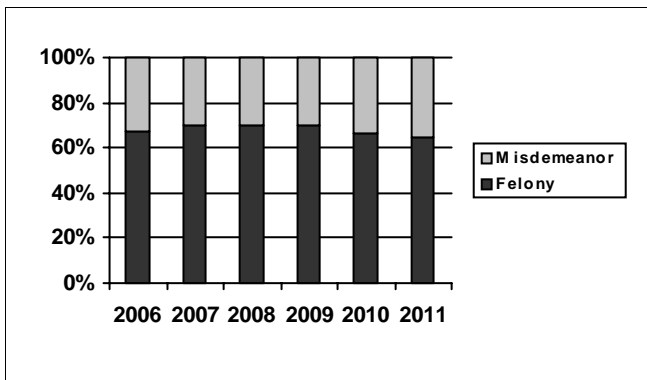
Summary of Juveniles Booked per Month

2006	2007	2008	2009	2010	2011
9,539	9,422	9,325	9,079	6,802	6,408

2011 Summary of Monthly Bookings

Q1	Q2	Q3	Average
6,593	6,605	6,032	6,408

Distribution of Charge in Juvenile Halls



While the majority of youth are detained in juvenile halls for felony charges, the percentage of misdemeanants has risen 5% in two years.

Summary of Felony Charges in Juvenile Halls

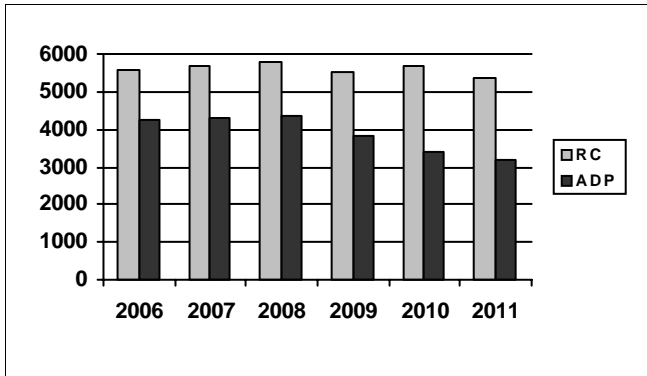
2006	2007	2008	2009	2010	2011
67%	70%	70%	70%	70%	66%

2011 Summary of Felony Charge Juvenile Hall

Q1	Q2	Q3	Average
66%	65%	65%	65%

Third Quarter Report, 2011 - Camp Data

RC and ADP for Camps



This marks the fifth quarter of declining camp population. It is noteworthy that three Los Angeles camps closed in May 2011.

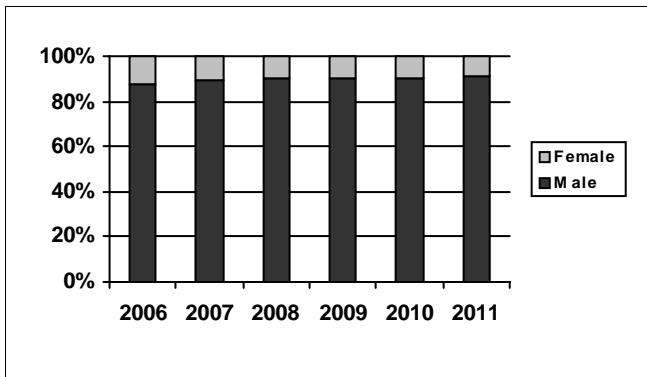
Summary of Camp ADP

2006	2007	2008	2009	2010	2011
4,252	4,278	4,338	3,841		3,374

2011 Summary of Camp ADP

Q1	Q2	Q3	Average
3,221	3,206	3,084	3,170

Gender Distribution in Camps



Camp populations continue to be primarily male.

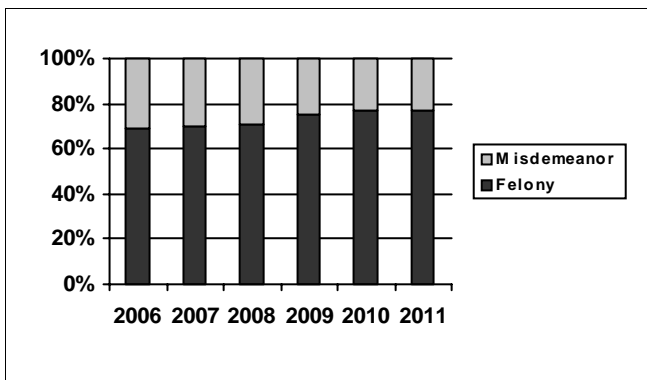
Summary of Males in Camps

2006	2007	2008	2009	2010	2011
88%	89%	90%	90%		90%

2011 Summary of Males in Camps

Q1	Q2	Q3	Average
91%	91%	90%	91%

Distribution of Charge in Camps



The percentage of youth committed to camp programs for felony charges continues to rise.

Summary of Felonies in Camps

2006	2007	2008	2009	2010	2011
69%	70%	71%	75%		77%

2011 Summary of Felonies in Camps

Q1	Q2	Q3	Average
76%	77%	78%	77%

Instructions for Interpreting the Survey Report

Capacity, Population and ADP Breakout is designed to present the Juvenile Detention Profile Survey results for the major reporting categories.

- **Capacity:** this category presents the Rated Capacity (RC) in terms of the number of beds in juvenile halls and camps/ranches that meet the Corrections Standards Authority (CSA) standards.
- **High One-Day:** each jurisdiction reports for each month in the quarter, the juvenile hall and camp/ranch populations that, together, constituted the highest one-day count of the month.
- **Other:** this category refers to the sum of all juveniles who are receiving custody credit while on home supervision with or without electronic monitoring, or in alternative confinement programs.

Breakout of Juveniles in Detention is designed to present County-specific counts.

- **County-specific counts:** this page identifies the ADP for each county and the percent that county contributes to the total state juvenile detention population. The counties are ranked in descending order based on their percentage of the overall juvenile detention population in the state.

Summary of Survey Results is designed to present all the remaining Juvenile Detention Profile Survey results not already listed.

- **One-Day Snapshot:** the percentages in this section are percentages of the total ADP for juvenile halls, camps/ranches, and other juveniles in the system.
- **Average number of days that one or more facilities in a county exceeded the Rated Capacity:** this value is the result of taking all of the counties "number of days of crowding" and averaging the figures submitted by all the jurisdictions. If a jurisdiction had no crowding days, that jurisdiction was not included in the computation. In other words, the value presented indicates the typical number of crowding days per month experienced by jurisdictions that have had one or more days of crowding in the Third Quarter of Calendar Year 2011.
- **Average Length of Stay:** these numbers are averages for all juveniles in each category: 1) "juvenile hall (all releases)" is computed by first taking the mean length of stay for all juveniles released from juvenile halls in a jurisdiction. Next, all the jurisdictions' means are averaged to produce a statewide figure; 2) "juvenile hall to camps/ranches" is computed in the same fashion, but includes only those juveniles released from juvenile hall and placed in a camp or ranch; 3) "juvenile hall to other out-of-home placements" presents the average length of stay for that subset of juveniles.