

# JUVENILE DETENTION PROFILE SURVEY



**THIRD QUARTER  
2009**

Corrections Standards Authority  
Facilities Standards and Operations Division  
600 Bercut Drive  
Sacramento CA 95811  
(916) 445-5073  
[www.csa.ca.gov](http://www.csa.ca.gov)

# JUVENILE DETENTION PROFILE SURVEY

## EXPLANATION OF RESULTS

The following link titles contain the Juvenile Detention Profile Survey results for the Third Quarter of Calendar Year 2009. **Capacity, Population and ADP Breakout** contains totals for major categories such as Highest One-Day Population, Average Daily Population (ADP), gender, and the age range of detained minors. **Breakout of Juveniles in Detention** contains information regarding counties' ADP and Rated Capacity (RC) breakouts and **Summary of Survey Results** contains information about a wide range of juvenile detention facility issues including crowding, mental health needs, average length of stay, and number of bookings.

***Juvenile Hall Data – Part 1 & 2, and Camp Data*** contains trend information compiled from 2004 through the third quarter of 2009. The trend data is separated into Juvenile Hall related data and Camp related data.

Please keep the following in mind when reviewing this information:

- For Overall Capacity, Crowding (highest one-day population-the count of minors in detention on the day of each county's highest population) and ADP (the average daily detention population for the reporting period), we have complete data from all jurisdictions in the state that operate juvenile detention facilities.
- Each jurisdiction provides us with the average population, computed across all the days in the month, for each of the three months in the quarter. The weighted average across the three months is then computed for each jurisdiction (with the monthly averages weighted by the number of days in the month). The jurisdictions ADPs are then combined to produce the state's total ADP.
- For some variables (other than ADP), we did not receive complete data from all jurisdictions. In such instances, we used statistical procedures to estimate the statewide total.
- Felony/misdemeanor, gender counts, and age-range breakouts are based upon a one-day snapshot (on the 15<sup>th</sup> day of the final month of the quarter). These values are used to determine the percentage of the population in each felony/misdemeanor, gender, and age category. The percentages are then applied to the Total ADP to project the expected ADP in each of the felony/misdemeanor, gender, and age-range categories.
- ***Please note:*** Each quarter, every county with juvenile detention facilities submits their data to the CSA. While we make every effort to review data for accuracy, including contacting individual counties for clarification, CSA cannot be responsible for data reporting errors made at the county level.

**California Corrections Standards Authority**  
**Juvenile Detention Profile Survey - 3rd Quarter, 2009**  
**Overall Capacity, Population and ADP**

<b>Overall Capacity and Population</b>							
	<b>JUVENILE HALL</b>		<b>CAMPS</b>		<b>OTHER</b>	<b>TOTAL</b>	
<b>ADP</b>	6,058.5		3,739.9		2,631.3	12,429.7	
<b>Percent of Total</b>	48.7%		30.1%		21.2%	100.0%	
<b>RC *</b>	8,348.0		5,337.3			13,685.3	
<b>High One Day</b>	6,863.0		3,797.0			10,660.0	

<b>Gender by Detention Type</b>								
	<b>JUVENILE HALL</b>		<b>CAMPS</b>		<b>OTHER</b>		<b>TOTAL</b>	
<b>GENDER</b>	<b>ADP</b>	<b>%</b>	<b>ADP</b>	<b>%</b>	<b>ADP</b>	<b>%</b>	<b>ADP</b>	<b>%</b>
<b>Male</b>	5,234.0	86.4%	3,362.8	89.9%	2,200.4	83.6%	10,797.3	86.9%
<b>Female</b>	824.5	13.6%	377.1	10.1%	430.8	16.4%	1,632.4	13.1%
<b>TOTAL</b>	<b>6,058.5</b>	<b>100.0%</b>	<b>3,739.9</b>	<b>100.0%</b>	<b>2,631.3</b>	<b>100.0%</b>	<b>12,429.7</b>	<b>100.0%</b>

<b>Disposition by Gender for Juvenile Halls</b>							
	<b>MALE</b>		<b>FEMALE</b>		<b>TOTAL</b>		
<b>DISPOSITION</b>	<b>Number</b>	<b>%</b>	<b>Number</b>	<b>%</b>	<b>Number</b>	<b>%</b>	
<b>Pre-Disposition</b>	2,883.6	55.1%	477.0	57.9%	3,360.6	55.5%	
<b>Post-Disposition</b>	2,350.4	44.9%	347.5	42.1%	2,697.9	44.5%	
<b>TOTAL</b>	<b>5,234.0</b>	<b>100.0%</b>	<b>824.5</b>	<b>100.0%</b>	<b>6,058.5</b>	<b>100.0%</b>	

<b>Disposition by Gender for Other Detention</b>							
	<b>MALE</b>		<b>FEMALE</b>		<b>TOTAL</b>		
<b>DISPOSITION</b>	<b>Number</b>	<b>%</b>	<b>Number</b>	<b>%</b>	<b>Number</b>	<b>%</b>	
<b>Pre-Disposition</b>	746.0	33.9%	141.7	32.9%	887.8	33.7%	
<b>Post-Disposition</b>	1,454.4	66.1%	289.1	67.1%	1,743.5	66.3%	
<b>TOTAL</b>	<b>2,200.4</b>	<b>100.0%</b>	<b>430.8</b>	<b>100.0%</b>	<b>2,631.3</b>	<b>100.0%</b>	

<b>Age Range by Type of Detention (One-Day Snapshot)</b>							
	<b>JUVENILE HALL</b>		<b>CAMPS</b>		<b>TOTAL</b>		
<b>AGE RANGES</b>	<b>Number</b>	<b>%</b>	<b>Number</b>	<b>%</b>	<b>Number</b>	<b>%</b>	
<b>Under 12</b>	7.0	0.1%	1.0	0.0%	8.0	0.1%	
<b>12 to 14</b>	751.0	12.2%	217.0	5.9%	968.0	9.9%	
<b>15 to 17</b>	4,887.0	79.7%	2,854.0	77.5%	7,741.0	78.8%	
<b>18 _Over</b>	489.0	8.0%	612.0	16.6%	1,101.0	11.2%	
<b>TOTAL</b>	<b>6,134.0</b>	<b>100.0%</b>	<b>3,684.0</b>	<b>100.0%</b>	<b>9,818.0</b>	<b>100.0%</b>	

\* RC is Rated Capacity which is the number of beds that comply with standards set forth in Title 24, California Code of Regulations.

**County Breakout Report - 3rd Quarter, 2009  
Facilities and Alternative Detention**

	<b>County</b>	<b>Rated Capacity</b>	<b>Facilities Detention</b>	<b>Other Detention</b>	<b>ADP</b>	<b>Percent of Total</b>	<b>Cumulative Percent</b>
1	Los Angeles	4,144	3,003.5	632.72	3,636.2	29.25%	29.25%
2	San Diego	1,105	845.0	250.68	1,095.7	8.82%	38.07%
3	Orange	797	694.8	87.02	781.9	6.29%	44.36%
4	Sacramento	386	321.9	337.22	659.1	5.30%	49.66%
5	Alameda	463	279.4	245.66	525.0	4.22%	53.89%
6	Santa Clara	550	362.4	161.34	523.8	4.21%	58.10%
7	Contra Costa	290	265.0	139.86	404.9	3.26%	61.36%
8	Kern	460	380.6	19.27	399.9	3.22%	64.57%
9	Riverside	584	374.9	18.00	392.9	3.16%	67.74%
10	Fresno	450	387.5	0.00	387.5	3.12%	70.85%
11	San Mateo	274	216.7	146.24	362.9	2.92%	73.77%
12	San Bernardino	620	344.4	0.00	344.4	2.77%	76.54%
13	Ventura	280	183.1	76.09	259.1	2.08%	78.63%
14	Tulare	345	160.5	91.18	251.7	2.02%	80.65%
15	Stanislaus	158	147.2	63.13	210.4	1.69%	82.35%
16	Monterey	193	164.5	28.35	192.8	1.55%	83.90%
17	San Francisco	234	121.7	69.78	191.5	1.54%	85.44%
18	San Joaquin	224	191.3	0.00	191.3	1.54%	86.98%
19	Santa Barbara	272	182.6	0.00	182.6	1.47%	88.45%
20	Merced	120	102.5	60.29	162.8	1.31%	89.76%
21	Sonoma	148	97.6	40.75	138.4	1.11%	90.87%
22	Solano	148	104.0	18.16	122.2	0.98%	91.85%
23	Yolo	90	69.9	15.83	85.7	0.69%	92.54%
24	Kings	95	83.5	0.00	83.5	0.67%	93.21%
25	Madera	134	67.5	12.51	80.0	0.64%	93.86%
26	El Dorado	80	56.6	18.04	74.7	0.60%	94.46%
27	Shasta	86	46.8	14.32	61.1	0.49%	94.95%
28	Yuba	120	57.6	0.00	57.6	0.46%	95.41%
29	Placer	55	33.0	23.72	56.7	0.46%	95.87%
30	Humboldt	44	38.0	13.31	51.3	0.41%	96.28%
31	Butte	60	46.0	4.34	50.4	0.41%	96.69%
32	San Luis Obispo	45	41.3	7.32	48.6	0.39%	97.08%
33	Napa	50	42.2	0.00	42.2	0.34%	97.42%
34	Santa Cruz	42	21.9	10.18	32.1	0.26%	97.68%
35	Del Norte	62	30.8	0.00	30.8	0.25%	97.92%
36	Mendocino	43	29.3	0.00	29.3	0.24%	98.16%
37	Marin	40	22.2	6.86	29.1	0.23%	98.39%
38	Colusa	60	29.0	0.00	29.0	0.23%	98.63%
39	Imperial	72	24.5	0.34	24.9	0.20%	98.83%
40	Lake	40	20.3	1.33	21.7	0.17%	99.00%
41	San Benito	20	18.3	1.34	19.7	0.16%	99.16%
42	Siskiyou	20	11.4	7.00	18.4	0.15%	99.31%
43	Tehama	40	17.6	0.00	17.6	0.14%	99.45%
44	Nevada	30	17.4	0.00	17.4	0.14%	99.59%
45	Lassen	40	9.9	3.00	12.9	0.10%	99.69%
46	Glenn	22	12.4	0.33	12.7	0.10%	99.79%
47	Trinity	28	11.4	0.00	11.4	0.09%	99.89%
48	Inyo	14	8.0	0.00	8.0	0.06%	99.95%
49	Tuolumne	0	0.0	5.00	5.0	0.04%	99.99%
50	Mariposa	4	0.4	0.33	0.7	0.01%	100.00%
51	Amador	0	0.0	0.46	0.5	0.00%	100.00%
52	Mono	4	0.0	0.00	0.0	0.00%	100.00%
53	Sierra	0	0.0	0.00	0.0	0.00%	100.00%
		<b>13,685</b>	<b>9,798.4</b>	<b>2,631.3</b>	<b>12,429.7</b>	<b>100.00%</b>	

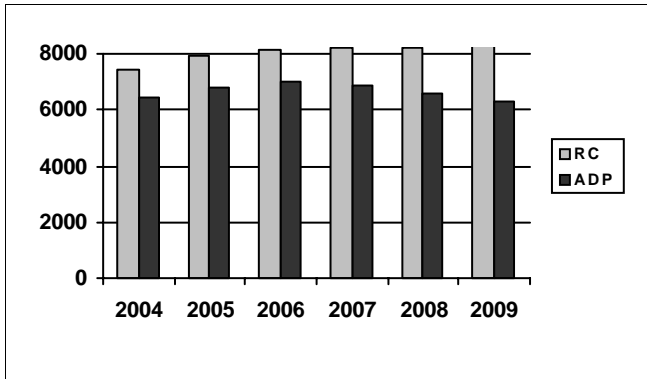
\*ADP on County Breakout Report may not equal ADP on other Summary Reports due to rounding

## Juvenile Detention Profile Survey

3rd Quarter Report 2009	One Day Snapshot									
	Rated Capacity	Misdemeanor		Felony		Pre-Disposition		Post-Disposition		Total ADP
		Male	Female	Male	Female	Male	Female	Male	Female	
<b>Juvenile Halls</b>	8,348.0	11.3%	2.8%	30.4%	3.7%	2,883.6	477.0	2,350.4	347.5	6,058.5
<b>Camps / Ranches</b>	5,337.3	6.6%	1.0%	21.3%	2.1%			3,362.8	377.1	3,739.9
<b>Other Juveniles in the System</b>		<b>Male</b>	<b>Female</b>	<b>Male</b>	<b>Female</b>	<b>Male</b>	<b>Female</b>	<b>Male</b>	<b>Female</b>	<b>Total ADP</b>
Juveniles on home supervision with electronic monitoring		5.3%	1.3%	5.0%	1.0%	492.4	87.4	850.3	178.9	1,609.0
Juveniles on home supervision without electronic monitoring		1.5%	0.5%	2.5%	0.5%	218.2	49.3	266.1	68.6	602.2
Juveniles alternative confinement programs		0.9%	0.1%	1.8%	0.2%	35.4	5.0	338.0	41.6	420.1
<b>Grand Totals</b>		<b>25.8%</b>	<b>5.7%</b>	<b>61.1%</b>	<b>7.5%</b>	<b>3,629.7</b>	<b>618.7</b>	<b>7,167.6</b>	<b>1,013.7</b>	<b>12,429.7</b>
<b>Mental Health Snapshot</b>										
Number of open mental health cases this day									4,857.9	
Number of juveniles receiving psychotropic medication									1,640.0	
<b>Crowding</b>										
Average daily population of juveniles in other jurisdictions DUE TO LACK OF SPACE									24.0	
Number of juveniles released early DUE TO LACK OF SPACE									65.2	
Average number of days that one or more facilities in a county exceeded the Rated Capacity									13.3	
<b>Average Bookings Per Month</b>										
Number of Juvenile Hall bookings/admissions									8,867.0	
Number of bookings for weapon-related offenses									688.6	
Number of 601 bookings									24.6	
Number of 777 bookings									1,527.9	
Number of direct file {WIC 602(b) and 707(d)} bookings									61.2	
<b>Final Month of the Quarter (One-Day Snapshot)</b>										
Detained for 707b Offense									1,189.8	
Awaiting placement									532.7	
Awaiting transport to a camp									238.8	
Awaiting transfer to Youth Authority									80.5	
Court commitments to juvenile hall (Ricardo M)									1,018.0	
Found unfit per 707.01 WIC									61.1	
Direct files to Adult Court-602(b) and 707(d) WIC									433.8	
Hospitalized outside detention facility for MEDICAL CARE									26.0	
Hospitalized outside detention facility for MENTAL HEALTH CARE									16.0	
Believed to be criminal illegal aliens									214.1	
<b>Average Length of Stay</b>										
Juvenile Hall (all releases)									39.7	
Juvenile Hall to Camps									53.5	
Juvenile Hall to other out-of-home placements (i.e. group homes or foster homes)									73.5	
Juvenile Hall who were found unfit (per juvenile court)									448.0	
Juvenile Hall who were direct filings to adult court									518.3	
Camps (all releases)									103.9	
<b>Cumulative Total for the Quarter</b>										
<b>Detention Behavior</b>						<b>Juvenile Halls</b>		<b>Camps / Ranches</b>		<b>Other Detention</b>
Assaults by juveniles on staff						134.3		15.0		1.0
Escapes						7.1		97.0		0.0
Suicide Attempts						79.1		1.0		0.0
Suicides						0.0		0.0		0.0

## Third Quarter Report, 2009 - Juvenile Hall Data

### Rated Capacity RC and ADP for Juvenile Halls



The 3rd Quarter ADP for juvenile halls decreased nearly 6% from the previous quarter. This is consistent with decreases in previous years, although the ADP of 6,059 is the lowest in recent years, and is almost 8% lower than the same quarter in 2008.

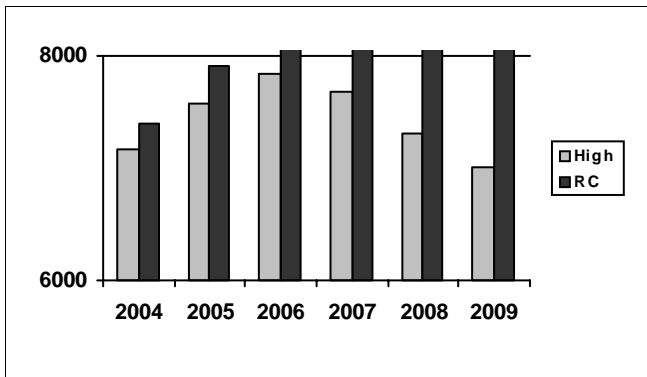
Summary of Juvenile Hall ADP

2004	2005	2006	2007	2008
6,460	6,818	7,017	6,858	6,614

2009 Summary of Juvenile Hall ADP

Q1	Q2	Q3	Average
6,384	6,435	6,059	6,291

### Juvenile Hall Highest One-Day Population and RC



The high one day population decreased 3% from the 2nd Quarter; like ADP, this number continues to decrease.

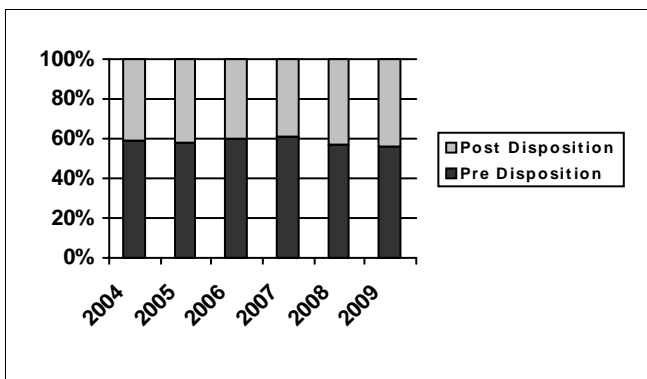
Summary of Juvenile Hall Highest One Day

2004	2005	2006	2007	2008
7,166	7,575	7,837	7,686	7,317

2009 Summary of Highest One-Day Population

Q1	Q2	Q3	Average
7,091	7,093	6,863	7,015

### Pre-Disposition in Juvenile Halls



The percentage of pre-disposition youth dropped to 56% in the 3rd Quarter 2009, the percentage hasn't been at 56% since the 4th Quarter 2008.

Summary of Pre-Disposition in Juvenile Halls

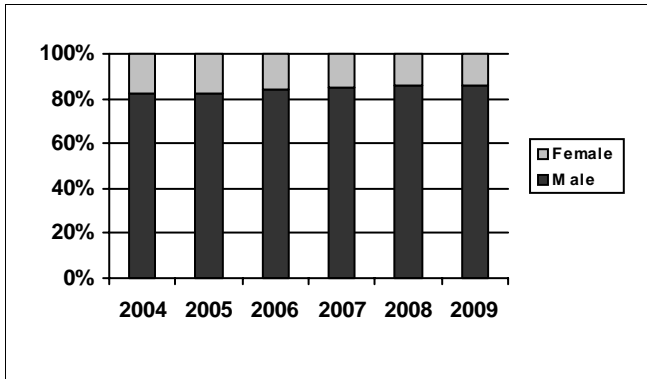
2004	2005	2006	2007	2008
59%	58%	60%	61%	57%

2009 Summary of Pre-Disposition Juvenile Halls

Q1	Q2	Q3	Average
56%	56%	55%	56%

# Third Quarter Report, 2009 - Juvenile Hall Data

## Gender Distribution in Juvenile Halls



The percentage of males in juvenile halls continues to remain stable.

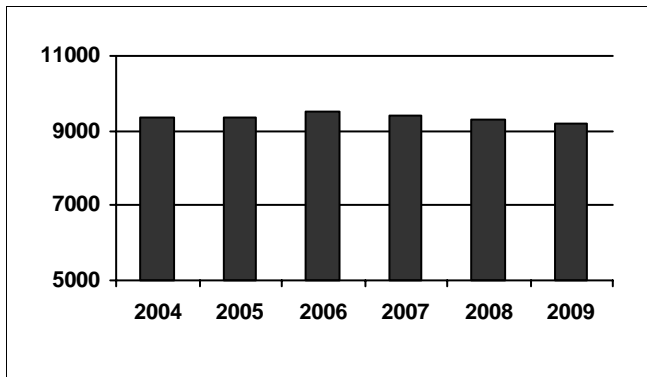
Summary of Males in Juvenile Halls

2004	2005	2006	2007	2008
82%	82%	84%	85%	86%

2009 Summary of Males in Juvenile Hall

Q1	Q2	Q3	Average
85%	86%	86%	86%

## Average Number of Juveniles Booked per Month



The average number of monthly bookings in the 3rd Quarter reached a low similar to that in the 4th Quarter 2008 (8,831). This quarter's bookings are 8% less than those in the 2nd Quarter 2009. Although the 3rd Quarter bookings always decrease from the 2nd Quarter, this year's decrease is greater than that in recent years.

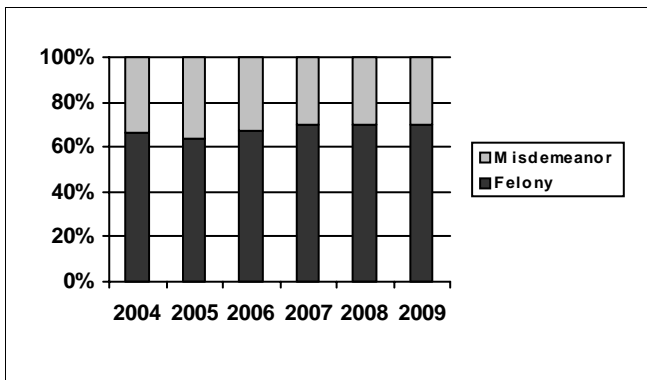
Summary of Juveniles Booked per Month

2004	2005	2006	2007	2008
9,337	9,353	9,539	9,422	9,325

2009 Summary of Monthly Bookings

Q1	Q2	Q3	Average
9,123	9,655	8,867	9,214

## Distribution of Charge in Juvenile Halls



The percentage of felonies has increased to 71% from 69% in the previous quarter. This quarter's percentage is more consistent with past year's data.

Summary of Felony Charges in Juvenile Halls

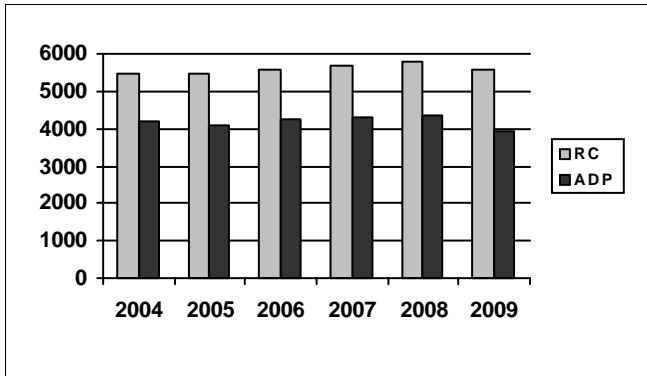
2004	2005	2006	2007	2008
66%	64%	67%	70%	70%

2009 Summary of Felony Charge Juvenile Hall

Q1	Q2	Q3	Average
70%	69%	71%	70%

## Third Quarter Report, 2009 - Camp Data

### RC and ADP for Camps

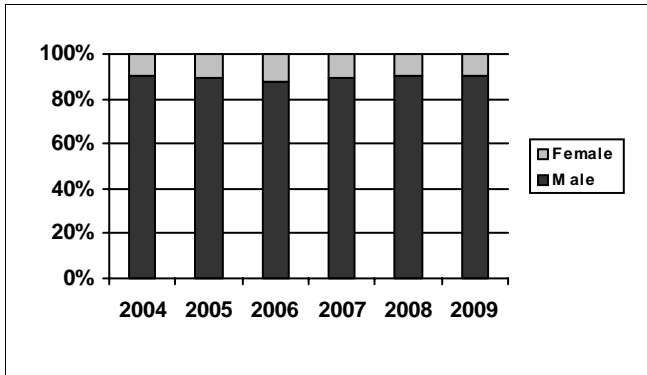


The ADP in camps continues to decline, this quarter's ADP decreased more than 5% from the previous quarter. This quarter's ADP is more than 13% less than the same quarter in 2008. RC decreased 4% from 2nd Quarter and 7% from 3rd Quarter 2008.

Summary of Camp ADP				
2004	2005	2006	2007	2008
4,182	4,097	4,252	4,278	4,338

2009 Summary of Camp ADP				
Q1	Q2	Q3		Average
4,026	3,956	3,740		3,906

### Gender Distribution in Camps

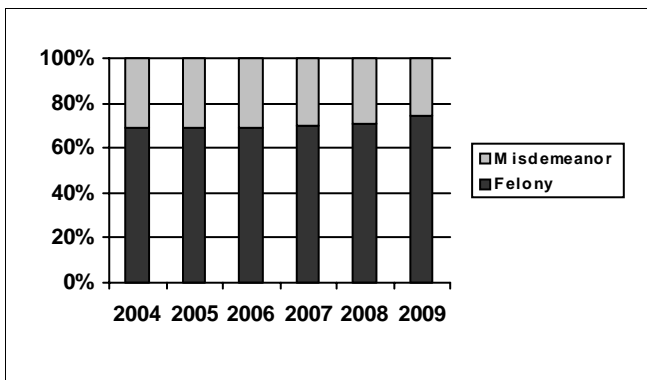


Gender distribution in camps remains consistent.

Summary of Males in Camps				
2004	2005	2006	2007	2008
90%	89%	88%	89%	90%

2009 Summary of Males in Camps				
Q1	Q2	Q3		Average
91%	90%	90%		90%

### Distribution of Charge in Camps



The percentage of felony charges in camps increased sharply from the 1st to 2nd Quarter this year, but remains stable from the 2nd to 3rd Quarter 2009.

Summary of Felonies in Camps				
2004	2005	2006	2007	2008
69%	69%	69%	70%	71%

2009 Summary of Felonies in Camps				
Q1	Q2	Q3		Average
72%	75%	75%		74%



## Instructions for Interpreting the Survey Report

**Capacity, Population and ADP Breakout** is designed to present the Juvenile Detention Profile Survey results for the major reporting categories.

- **Capacity:** this category presents the Rated Capacity (RC) in terms of the number of beds in juvenile halls and camps/ranches that meet the Corrections Standards Authority (CSA) standards.
- **High One-Day:** each jurisdiction reports for each month in the quarter, the juvenile hall and camp/ranch populations that, together, constituted the highest one-day count of the month.
- **Other:** this category refers to the sum of all juveniles who are receiving custody credit while on home supervision with or without electronic monitoring, or in alternative confinement programs.

**Breakout of Juveniles in Detention** is designed to present County-specific counts.

- **County-specific counts:** this page identifies the ADP for each county and the percent that county contributes to the total state juvenile detention population. The counties are ranked in descending order based on their percentage of the overall juvenile detention population in the state.

**Summary of Survey Results** is designed to present all the remaining Juvenile Detention Profile Survey results not already listed.

- **One-Day Snapshot:** the percentages in this section are percentages of the total ADP for juvenile halls, camps/ranches, and other juveniles in the system.
- **Average number of days that one or more facilities in a county exceeded the Rated Capacity:** this value is the result of taking all of the counties “number of days of crowding” and averaging the figures submitted by all the jurisdictions. If a jurisdiction had no crowding days, that jurisdiction was not included in the computation. In other words, the value presented indicates the typical number of crowding days per month experienced by jurisdictions that have had one or more days of crowding in the Third Quarter of Calendar Year 2009.
- **Average Length of Stay:** these numbers are averages for all juveniles in each category: 1) “juvenile hall (all releases)” is computed by first taking the mean length of stay for all juveniles released from juvenile halls in a jurisdiction. Next, all the jurisdictions’ means are averaged to produce a statewide figure; 2) “juvenile hall to camps/ranches” is computed in the same fashion, but includes only those juveniles released from juvenile hall and placed in a camp or ranch; 3) “juvenile hall to other out-of-home placements” presents the average length of stay for that subset of juveniles.