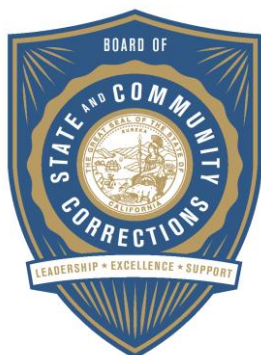


JUVENILE DETENTION PROFILE SURVEY

.....
Second Quarter Calendar Year 2012
Survey Results



BOARD OF STATE AND COMMUNITY CORRECTIONS

FACILITIES STANDARDS AND OPERATIONS DIVISION
600 Bercut Drive, Sacramento, CA 95811
916.445.5073 **PHONE**
916.327.3317 **FAX**
bscc.ca.gov

Leadership



Excellence



Support

EXPLANATION OF RESULTS

The following pages contain the Juvenile Detention Profile Survey results for the Second Quarter of Calendar Year 2012. Page 3 contains totals for major categories such as Highest One-Day Population, Average Daily Population (ADP), gender, and the age range of detained minors. Page 4 contains information regarding counties' ADP and Rated Capacity (RC) breakouts and Page 5 contains information about a wide range of juvenile detention facility issues including crowding, mental health needs, average length of stay, and number of bookings.

Pages 6, 7, and 8 contain trend information compiled from calendar year 2007 through calendar year 2011. The trend data is separated into Juvenile Hall related data and Camp related data.

Please keep the following in mind when reviewing this information:

- For Overall Capacity, Crowding (highest one-day population – the count of minors in detention on the day of each county's highest population) and ADP (the average daily detention population for the reporting period), we have complete data from all jurisdictions in the state that operate juvenile detention facilities.
- Each jurisdiction provides us with the average population, computed across all the days in the month, for each of the three months in the quarter. The weighted average across the three months is then computed for each jurisdiction (with the monthly averages weighted by the number of days in the month). The jurisdictions ADPs are then combined to produce the state's total ADP.
- For some variables (other than ADP), we did not receive complete data from all jurisdictions. In such instances, we used statistical procedures to estimate the statewide total.
- Felony/misdemeanor, gender counts, and age-range breakouts are based upon a one-day snapshot (on the 15th day of the final month of the quarter). These values are used to determine the percentage of the population in each felony/misdemeanor, gender, and age category. The percentages are then applied to the Total ADP to project the expected ADP in each of the felony/misdemeanor, gender, and age-range categories.
- In addition to the population breakdowns for juvenile halls and camps, the report contains like information for youth who were part of non-facility based, alternative to detention programs. Youth in that category are listed under "Other Detention." Other detention includes home supervision with and without electronic monitoring, day reporting centers, work programs and other alternatives to detention **for which youth are credited with custody time.**
- **Please note:**
 - In early 2011, eight regional trainings were held for county reporters and contributors to the JDPS. When interpreting the JDPS results from the 2nd quarter of 2011 forward, please consider that the clarification of variable definitions and calculations which occurred at those trainings may explain some unanticipated differences when compared to prior quarters.
 - Each quarter, every county with juvenile detention facilities submits their data to the Board of State and Community Corrections. While we make every effort to review data for accuracy, including contacting individual counties for clarification, the BSCC cannot be responsible for data reporting errors made at the county level.

Board of State and Community Corrections
Juvenile Detention Profile Survey - 2nd Quarter, 2012
Overall Capacity, Population and ADP

Overall Capacity and Population								
	JUVENILE HALL		CAMPS		OTHER		TOTAL	
ADP	4,718.6		2,878.8		1,300.1		8,897.5	
Percent of Total	53.0%		32.4%		14.6%		100.0%	
RC *	8,199.0		4,948.3				13,147.3	
High One Day	5,362.0		3,034.0				8,396.0	
Gender by Detention Type								
	JUVENILE HALL		CAMPS		OTHER		TOTAL	
GENDER	ADP	%	ADP	%	ADP	%	ADP	%
Male	4,041.4	85.6%	2,589.6	90.0%	1,079.0	83.0%	7,710.1	86.7%
Female	677.2	14.4%	289.2	10.0%	221.1	17.0%	1,187.5	13.3%
TOTAL	4,718.6	100.0%	2,878.8	100.0%	1,300.1	100.0%	8,897.5	100.0%
Disposition by Gender for Juvenile Halls								
	MALE		FEMALE		TOTAL			
DISPOSITION	Number	%	Number	%	Number	%	Number	%
Pre-Disposition	2,086.4	51.6%	370.6	54.7%	2,457.0	52.1%		
Post-Disposition	1,955.0	48.4%	306.6	45.3%	2,261.7	47.9%		
TOTAL	4,041.4	100.0%	677.2	100.0%	4,718.6	100.0%		
Disposition by Gender for Other Detention								
	MALE		FEMALE		TOTAL			
DISPOSITION	Number	%	Number	%	Number	%	Number	%
Pre-Disposition	346.4	32.1%	80.1	36.2%	426.5	32.8%		
Post-Disposition	732.6	67.9%	141.0	63.8%	873.6	67.2%		
TOTAL	1,079.0	100.0%	221.1	100.0%	1,300.1	100.0%		
Age Range by Type of Detention (One-Day Snapshot)								
	JUVENILE HALL		CAMPS		TOTAL			
AGE RANGES	Number	%	Number	%	Number	%	Number	%
Under 12	6.0	0.1%	0.0	0.0%	6.0	0.1%		
12 to 14	577.0	12.4%	147.0	4.8%	724.0	9.4%		
15 to 17	3,584.0	76.9%	2,232.0	73.4%	5,816.0	75.5%		
18 Over	491.0	10.5%	663.0	21.8%	1,154.0	15.0%		
TOTAL	4,658.0	100.0%	3,042.0	100.0%	7,700.0	100.0%		

* RC is Rated Capacity which is the number of beds that comply with standards set forth in Title 24, California Code of Regulations.

**County Breakout Report - 2nd Quarter, 2012
Facilities and Alternative Detention**

	County	Rated Capacity	Facilities Detention	Other Detention	ADP	Percent of Total	Cumulative Percent
1	Los Angeles	3,573	2,134.2	39.01	2,173.2	24.43%	24.43%
2	San Diego	1,105	750.4	220.09	970.5	10.91%	35.33%
3	Orange	743	491.0	69.00	560.0	6.29%	41.63%
4	Fresno	450	319.0	134.64	453.6	5.10%	46.73%
5	Santa Clara	538	222.4	164.00	386.4	4.34%	51.07%
6	Kern	475	359.2	3.81	363.0	4.08%	55.15%
7	Sacramento	444	175.0	166.36	341.4	3.84%	58.98%
8	Riverside	582	279.2	41.23	320.4	3.60%	62.59%
9	San Bernardino	450	313.9	0.00	313.9	3.53%	66.11%
10	Alameda	463	277.3	34.93	312.2	3.51%	69.62%
11	Contra Costa	390	244.2	0.00	244.2	2.74%	72.37%
12	San Mateo	246	149.3	93.13	242.5	2.73%	75.09%
13	Tulare	330	154.2	62.61	216.8	2.44%	77.53%
14	Monterey	190	132.3	65.51	197.8	2.22%	79.75%
15	Sonoma	188	117.2	49.54	166.7	1.87%	81.63%
16	Santa Barbara	272	159.0	0.00	159.0	1.79%	83.41%
17	San Joaquin	224	153.7	0.00	153.7	1.73%	85.14%
18	Stanislaus	158	122.1	26.32	148.4	1.67%	86.81%
19	Merced	120	85.9	47.24	133.1	1.50%	88.30%
20	Ventura	385	123.3	0.00	123.3	1.39%	89.69%
21	Solano	148	104.5	12.50	117.0	1.32%	91.01%
22	San Francisco	234	86.6	0.00	86.6	0.97%	91.98%
23	Kings	205	76.3	0.00	76.3	0.86%	92.84%
24	Madera	70	51.1	10.54	61.7	0.69%	93.53%
25	El Dorado	80	38.0	14.04	52.0	0.58%	94.11%
26	Butte	60	40.7	2.00	42.7	0.48%	94.59%
27	Yuba	120	40.3	0.00	40.3	0.45%	95.05%
28	Yolo	90	27.9	9.85	37.7	0.42%	95.47%
29	Shasta	56	26.6	10.68	37.3	0.42%	95.89%
30	Placer	58	35.7	0.00	35.7	0.40%	96.29%
31	Del Norte	62	32.7	0.00	32.7	0.37%	96.66%
32	Humboldt	44	27.4	3.74	31.1	0.35%	97.01%
33	San Luis Obispo	45	29.4	0.00	29.4	0.33%	97.34%
34	Lake	30	19.3	7.34	26.7	0.30%	97.64%
35	Mendocino	43	26.6	0.00	26.6	0.30%	97.94%
36	Santa Cruz	42	25.5	0.00	25.5	0.29%	98.22%
37	Napa	50	22.2	0.00	22.2	0.25%	98.47%
38	Nevada	60	16.0	3.33	19.3	0.22%	98.69%
39	Lassen	40	9.7	6.33	16.0	0.18%	98.87%
40	Siskiyou	40	16.0	0.00	16.0	0.18%	99.05%
41	Imperial	72	14.7	0.00	14.7	0.17%	99.22%
42	Tehama	40	14.7	0.00	14.7	0.17%	99.38%
43	Marin	40	13.4	0.00	13.4	0.15%	99.53%
44	San Benito	20	11.4	0.66	12.0	0.13%	99.67%
45	Trinity	28	9.7	0.00	9.7	0.11%	99.78%
46	Glenn	22	9.2	0.00	9.2	0.10%	99.88%
47	Inyo	14	9.1	0.00	9.1	0.10%	99.98%
48	Tuolumne	0	0.0	1.68	1.7	0.02%	100.00%
49	Mariposa	4	0.0	0.00	0.0	0.00%	100.00%
50	Mono	4	0.0	0.00	0.0	0.00%	100.00%
51	Sierra	0	0.0	0.00	0.0	0.00%	100.00%
		13,147	7,597.4	1,300.1	8,897.5	100.00%	

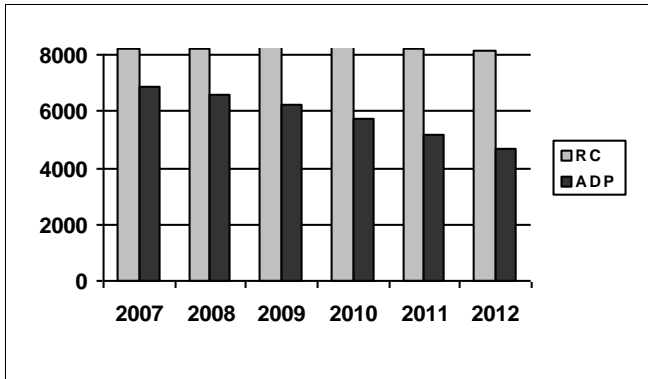
*ADP on County Breakout Report may not equal ADP on other Summary Reports due to rounding

Juvenile Detention Profile Survey

2nd Quarter Report 2012	One Day Snapshot									
	Rated Capacity	Misdemeanor		Felony		Pre-Disposition		Post-Disposition		Total ADP
		Male	Female	Male	Female	Male	Female	Male	Female	
Juvenile Halls	8,199.0	14.8%	4.2%	31.6%	3.5%	2,086.4	370.6	1,955.0	306.6	4,718.6
Camps / Ranches	4,948.3	6.2%	1.3%	23.6%	2.1%			2,589.6	289.2	2,878.8
Other Juveniles in the System		Male	Female	Male	Female	Male	Female	Male	Female	Total ADP
Juveniles on home supervision with electronic monitoring		2.2%	0.6%	2.4%	0.5%	189.1	37.4	344.0	62.3	632.8
Juveniles on home supervision without electronic monitoring		1.9%	0.6%	2.3%	0.6%	154.4	41.3	241.1	61.4	498.2
Juveniles alternative confinement programs		0.4%	0.1%	1.0%	0.1%	3.0	1.3	147.4	17.3	169.1
Grand Totals		25.5%	6.7%	61.0%	6.8%	2,432.8	450.6	5,277.2	736.8	8,897.5
Mental Health Snapshot										
Number of open mental health cases this day									4,000.2	
Number of juveniles receiving psychotropic medication									1,466.9	
Crowding										
Average daily population of juveniles in other jurisdictions DUE TO LACK OF SPACE									0.0	
Number of juveniles released early DUE TO LACK OF SPACE									0.0	
Average number of days that one or more facilities in a county exceeded the Rated Capacity									1.5	
Average Bookings Per Month										
Number of Juvenile Hall bookings/admissions									5,800.5	
Number of bookings for weapon-related offenses									371.3	
Number of 601 bookings									39.3	
Number of 777 bookings									1,258.3	
Number of direct file {WIC 602(b) and 707(d)} bookings									49.0	
Final Month of the Quarter (One-Day Snapshot)										
Detained for 707b Offense									892.3	
Awaiting placement									513.9	
Awaiting transport to a camp									270.0	
Awaiting transfer to Youth Authority									27.0	
Court commitments to juvenile hall (Ricardo M)									615.4	
Found unfit per 707.01 WIC									80.0	
Direct files to Adult Court-602(b) and 707(d) WIC									358.0	
Hospitalized outside detention facility for MEDICAL CARE									4.0	
Hospitalized outside detention facility for MENTAL HEALTH CARE									3.0	
Believed to be criminal illegal aliens									158.1	
Average Length of Stay										
Juvenile Hall (all releases)									23.1	
Juvenile Hall to Camps									33.8	
Juvenile Hall to other out-of-home placements (i.e. group homes or foster homes)									43.6	
Juvenile Hall who were found unfit (per juvenile court)									467.5	
Juvenile Hall who were direct filings to adult court									238.6	
Camps (all releases)									129.7	
Cumulative Total for the Quarter										
Detention Behavior						Juvenile Halls	Camps / Ranches	Other Detention		
Assaults by juveniles on staff						38.0	8.0	0.0		
Escapes						1.0	58.0	10.1		
Suicide Attempts						31.0	0.0	0.0		
Suicides						0.0	0.0	0.0		

Second Quarter Report, 2012 - Juvenile Hall Data

Rated Capacity RC and ADP for Juvenile Halls

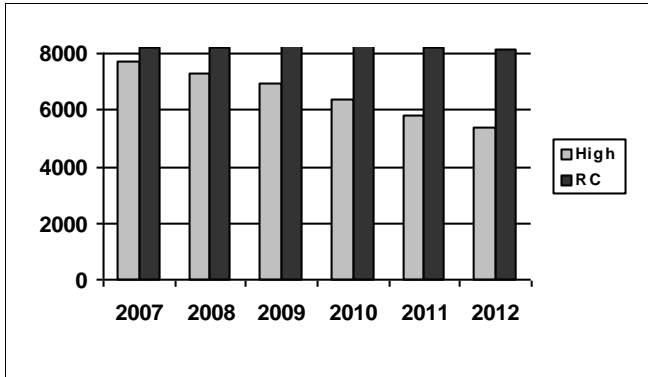


Juvenile hall average daily population increased by 25 youth in the 2nd quarter. ADP remains 1/3 lower than in 2006

Summary of Juvenile Hall ADP				
2007	2008	2009	2010	2011
6,858	6,614	6,197	5,722	5,137

2012 Summary of Juvenile Hall ADP				
Q1	Q2			Average
4,694	4,719			4,706

Juvenile Hall Highest One-Day Population and RC

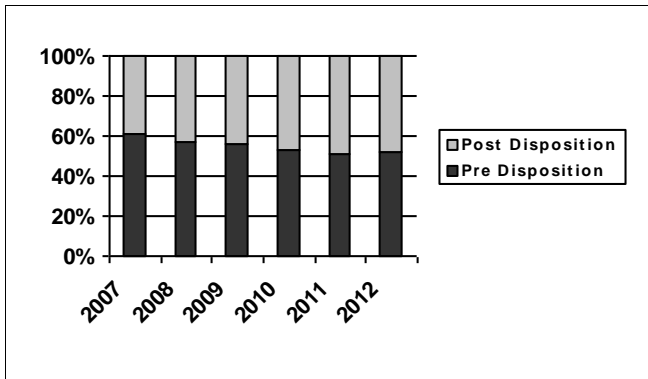


Like ADP, a small increase (24 youth) was seen in high day population in the 2nd quarter reporting.

Summary of Juvenile Hall Highest One Day				
2007	2008	2009	2010	2011
7,686	7,317	6,915	6,387	5,795

2012 Summary of Highest One-Day Population				
Q1	Q2			Average
5,338	5,362			5,350

Pre-Disposition in Juvenile Halls



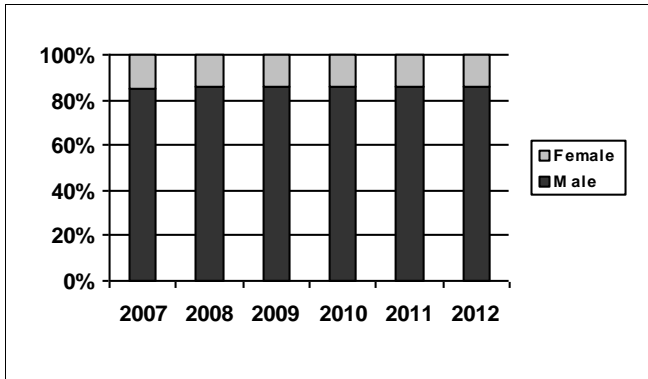
The percentage of youth who are being detained in a pre-disposition status remains at approximately half.

Summary of Pre-Disposition in Juvenile Halls				
2007	2008	2009	2010	2011
61%	57%	56%	53%	51%

2012 Summary of Pre-Disposition Juvenile Halls				
Q1	Q2			Average
52%	52%			52%

Second Quarter Report, 2012 - Juvenile Hall Data

Gender Distribution in Juvenile Halls



The distribution of population by gender remains unchanged since 2008.

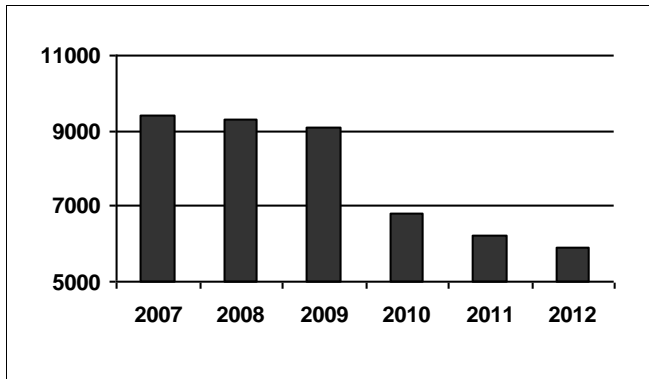
Summary of Males in Juvenile Halls

2007	2008	2009	2010	2011
85%	86%	86%	86%	86%

2012 Summary of Males in Juvenile Hall

Q1	Q2			Average
86%	86%			86%

Average Number of Juveniles Booked per Month



There was a decrease in juvenile hall bookings (227) from the 1st quarter of 2012. This figure continues to run below previous year averages.

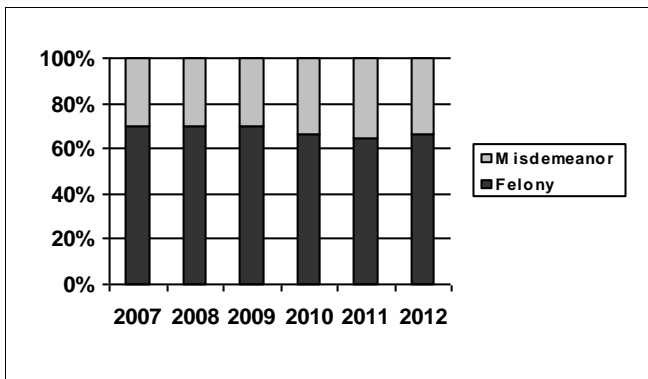
Summary of Juveniles Booked per Month

2007	2008	2009	2010	2011
9,423	9,325	9,079	6,803	6,203

2012 Summary of Monthly Bookings

Q1	Q2			Average
6,028	5,801			5,914

Distribution of Charge in Juvenile Halls



The percentage of youth in custody on felony versus misdemeanor charges has remained relatively unchanged since 2010.

Summary of Felony Charges in Juvenile Halls

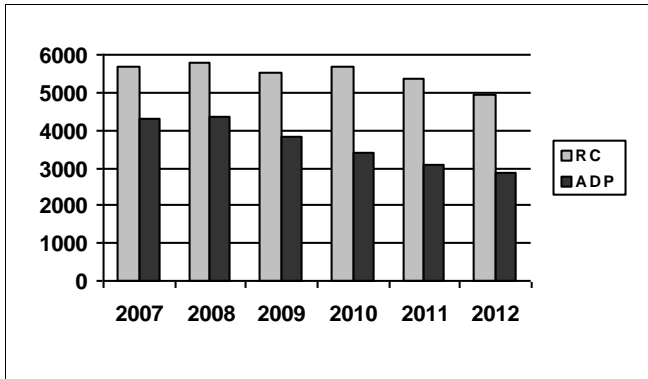
2007	2008	2009	2010	2011
70%	70%	70%	66%	65%

2012 Summary of Felony Charge Juvenile Hall

Q1	Q2			Average
66%	65%			66%

Second Quarter Report, 2012 - Camp Data

RC and ADP for Camps



The average daily population of camps, like the juvenile halls, increased slightly over the 1st quarter.

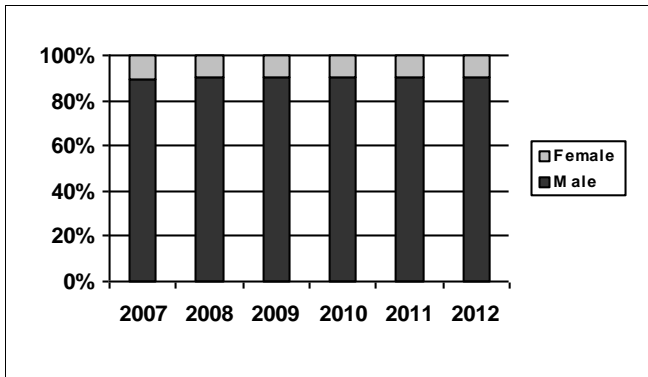
Summary of Camp ADP

2007	2008	2009	2010	2011
4,278	4,338	3,841	3,374	3,105

2012 Summary of Camp ADP

Q1	Q2			Average
2,838	2,879			2,858

Gender Distribution in Camps



Girls continue to make up only 10% of the camp population.

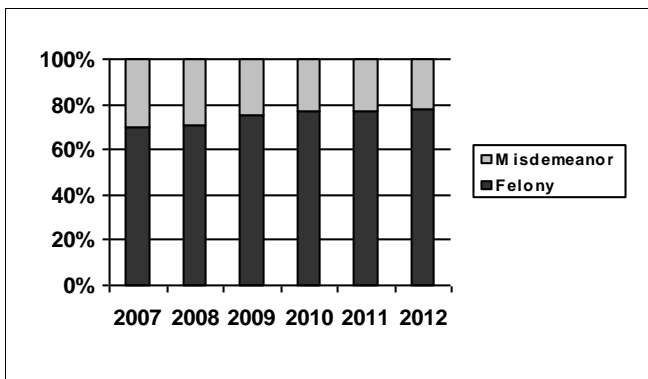
Summary of Males in Camps

2007	2008	2009	2010	2011
89%	90%	90%	90%	90%

2012 Summary of Males in Camps

Q1	Q2			Average
90%	90%			90%

Distribution of Charge in Camps



The percentage of youth committed to camp with felony charges increased by 1% in the 2nd quarter.

Summary of Felonies in Camps

2007	2008	2009	2010	2011
70%	71%	75%	77%	77%

2012 Summary of Felonies in Camps

Q1	Q2			Average
77%	78%			78%

INSTRUCTIONS FOR INTERPRETING THE SURVEY REPORT

The Overall Capacity, Population and ADP Page is designed to present the Juvenile Detention Profile Survey results for the major reporting categories.

- **Capacity:** this category presents the Rated Capacity (RC) in terms of the number of beds in juvenile halls and camps/ranches that meet the Board of State and Community Corrections standards.
- **High One-Day:** each jurisdiction reports for each month in the quarter, the juvenile hall and camp/ranch populations that, together, constituted the highest one-day count of the month.
- **Other:** this category refers to the sum of all juveniles who are receiving custody credit while on home supervision with or without electronic monitoring, or in alternative confinement programs.

The County Breakout Report Page is designed to present county-specific information.

- **County comparison:** this page identifies the ADP for each county and the percent that county contributes to the total state juvenile detention population. The counties are ranked in descending order based on their percentage of the overall juvenile detention population in the state.

The Additional Information Page is designed to present all the remaining Juvenile Detention Profile Survey results not already listed.

- **One-Day Snapshot:** the percentages in this section are percentages of the total ADP for juvenile halls, camps/ranches, and other juveniles in the system.
- **Average number of days that one or more facilities in a county exceeded the Rated Capacity:** this value is the result of taking all of the counties “number of days of crowding” and averaging the figures submitted by all the jurisdictions. If a jurisdiction had no crowding days, that jurisdiction was not included in the computation. In other words, the value presented indicates the typical number of crowding days per month experienced by jurisdictions that have had one or more days of crowding in the Second Quarter of Calendar Year 2012.
- **Average Length of Stay:** these numbers are averages for all juveniles in each category:
 - 1) “juvenile hall (all releases)” is computed by first taking the mean length of stay for all juveniles released from juvenile halls in a jurisdiction. Next, all the jurisdictions’ means are averaged to produce a statewide figure;
 - 2) “juvenile hall to camps/ranches” is computed in the same fashion, but includes only those juveniles released from juvenile hall and placed in a camp or ranch;
 - 3) “juvenile hall to other out-of-home placements” presents the average length of stay for that subset of juveniles.