

# JUVENILE DETENTION PROFILE SURVEY



**SECOND QUARTER  
2011**

Corrections Standards Authority  
Facilities Standards and Operations Division  
600 Bercut Drive  
Sacramento CA 95811  
(916) 445-5073  
[www.csa.ca.gov](http://www.csa.ca.gov)

## JUVENILE DETENTION PROFILE SURVEY

### EXPLANATION OF RESULTS

The following link titles contain the Juvenile Detention Profile Survey results for the Second Quarter of Calendar Year 2011. **Capacity, Population and ADP Breakout** contains totals for major categories such as Highest One-Day Population, Average Daily Population (ADP), gender, and the age range of detained minors. **Breakout of Juveniles in Detention** contains information regarding counties' ADP and Rated Capacity (RC) breakouts and **Summary of Survey Results** contains information about a wide range of juvenile detention facility issues including crowding, mental health needs, average length of stay, and number of bookings.

**Juvenile Hall Data – Part 1 & 2, and Camp Data** contains trend information compiled from 2006 through the second quarter of calendar year 2011. The trend data is separated into Juvenile Hall related data and Camp related data.

Please keep the following in mind when reviewing this information:

- For Overall Capacity, Crowding (highest one-day population-the count of minors in detention on the day of each county's highest population) and ADP (the average daily detention population for the reporting period), we have complete data from all jurisdictions in the state that operate juvenile detention facilities.
- Each jurisdiction provides us with the average population, computed across all the days in the month, for each of the three months in the quarter. The weighted average across the three months is then computed for each jurisdiction (with the monthly averages weighted by the number of days in the month). The jurisdictions ADPs are then combined to produce the state's total ADP.
- For some variables (other than ADP), we did not receive complete data from all jurisdictions. In such instances, we used statistical procedures to estimate the statewide total.
- Felony/misdemeanor, gender counts, and age-range breakouts are based upon a one-day snapshot (on the 15<sup>th</sup> day of the final month of the quarter). These values are used to determine the percentage of the population in each felony/misdemeanor, gender, and age category. The percentages are then applied to the Total ADP to project the expected ADP in each of the felony/misdemeanor, gender, and age-range categories.
- In addition to the population breakdowns for juvenile halls and camps, the report contains like information for youth who were part of non-facility based, alternative to detention programs. Youth in that category are listed under "Other Detention". Other detention includes home supervision with and without electronic monitoring, day reporting centers, work programs and other alternatives to detention **for which youth are credited with custody time.**
- **Please note:**
  - In early 2011, eight regional trainings were held for county reporters and contributors to the JDPS. When interpreting the JDPS results from the 2<sup>nd</sup> quarter of 2011 forward, please consider that the clarification of variable definitions and calculations which occurred at those trainings may explain some unanticipated differences when compared to prior quarters.
  - Each quarter, every county with juvenile detention facilities submits their data to the CSA. While we make every effort to review data for accuracy, including contacting individual counties for clarification, CSA cannot be responsible for data reporting errors made at the county level.

**California Corrections Standards Authority**  
**Juvenile Detention Profile Survey - 2nd Quarter, 2011**  
**Overall Capacity, Population and ADP**

<b>Overall Capacity and Population</b>								
	JUVENILE HALL		CAMPS		OTHER		TOTAL	
ADP	5,325.2		3,205.8		1,862.7		10,393.7	
Percent of Total	51.2%		30.8%		17.9%		100.0%	
RC *	8,137.0		5,410.0				13,547.0	
High One Day	6,019.0		3,250.0				9,269.0	
<b>Gender by Detention Type</b>								
	JUVENILE HALL		CAMPS		OTHER		TOTAL	
GENDER	ADP	%	ADP	%	ADP	%	ADP	%
Male	4,566.4	85.8%	2,916.0	91.0%	1,510.5	81.1%	8,992.9	86.5%
Female	758.8	14.2%	289.8	9.0%	352.3	18.9%	1,400.8	13.5%
<b>TOTAL</b>	<b>5,325.2</b>	<b>100.0%</b>	<b>3,205.8</b>	<b>100.0%</b>	<b>1,862.7</b>	<b>100.0%</b>	<b>10,393.7</b>	<b>100.0%</b>
<b>Disposition by Gender for Juvenile Halls</b>								
	MALE		FEMALE		TOTAL			
DISPOSITION	Number	%	Number	%	Number	%	Number	%
Pre-Disposition	2,361.7	51.7%	414.3	54.6%	2,775.9	52.1%		
Post-Disposition	2,204.8	48.3%	344.5	45.4%	2,549.3	47.9%		
<b>TOTAL</b>	<b>4,566.4</b>	<b>100.0%</b>	<b>758.8</b>	<b>100.0%</b>	<b>5,325.2</b>	<b>100.0%</b>		
<b>Disposition by Gender for Other Detention</b>								
	MALE		FEMALE		TOTAL			
DISPOSITION	Number	%	Number	%	Number	%	Number	%
Pre-Disposition	602.2	39.9%	147.3	41.8%	749.5	40.2%		
Post-Disposition	908.3	60.1%	204.9	58.2%	1,113.2	59.8%		
<b>TOTAL</b>	<b>1,510.5</b>	<b>100.0%</b>	<b>352.3</b>	<b>100.0%</b>	<b>1,862.7</b>	<b>100.0%</b>		
<b>Age Range by Type of Detention (One-Day Snapshot)</b>								
	JUVENILE HALL		CAMPS		TOTAL			
AGE RANGES	Number	%	Number	%	Number	%	Number	%
Under 12	3.1	0.1%	0.0	0.0%	3.1	0.0%		
12 to 14	544.7	10.3%	205.0	6.3%	749.7	8.8%		
15 to 17	4,244.3	80.5%	2,453.0	74.8%	6,697.3	78.3%		
18 _Over	482.8	9.2%	620.0	18.9%	1,102.8	12.9%		
<b>TOTAL</b>	<b>5,275.0</b>	<b>100.0%</b>	<b>3,278.0</b>	<b>100.0%</b>	<b>8,553.0</b>	<b>100.0%</b>		

\* RC is Rated Capacity which is the number of beds that comply with standards set forth in Title 24, California Code of Regulations.

**County Breakout Report - 2nd Quarter, 2011  
Facilities and Alternative Detention**

	<b>County</b>	<b>Rated Capacity</b>	<b>Facilities Detention</b>	<b>Other Detention</b>	<b>ADP</b>	<b>Percent of Total</b>	<b>Cumulative Percent</b>
1	Los Angeles	4,144	2,372.8	270.70	2,643.5	25.43%	25.43%
2	San Diego	1,105	791.5	263.78	1,055.3	10.15%	35.59%
3	Orange	797	592.2	72.51	664.7	6.40%	41.98%
4	Fresno	450	337.9	128.41	466.4	4.49%	46.47%
5	Santa Clara	538	280.3	171.71	452.0	4.35%	50.82%
6	Kern	475	396.8	16.78	413.6	3.98%	54.80%
7	San Bernardino	420	386.5	0.00	386.5	3.72%	58.51%
8	Riverside	582	339.7	22.17	361.9	3.48%	62.00%
9	Sacramento	270	190.4	170.37	360.8	3.47%	65.47%
10	Alameda	463	278.2	40.54	318.7	3.07%	68.53%
11	San Mateo	274	174.2	139.79	314.0	3.02%	71.55%
12	Tulare	330	183.6	91.69	275.3	2.65%	74.20%
13	Contra Costa	290	247.6	0.00	247.6	2.38%	76.59%
14	San Francisco	234	105.7	119.91	225.6	2.17%	78.76%
15	Santa Barbara	272	180.6	0.00	180.6	1.74%	80.49%
16	Stanislaus	158	137.7	42.52	180.2	1.73%	82.23%
17	Monterey	190	138.3	40.63	178.9	1.72%	83.95%
18	Ventura	295	167.6	0.00	167.6	1.61%	85.56%
19	Sonoma	188	113.1	54.51	167.6	1.61%	87.18%
20	San Joaquin	224	159.6	0.00	159.6	1.54%	88.71%
21	Merced	120	97.1	54.28	151.4	1.46%	90.17%
22	Solano	148	104.3	16.62	120.9	1.16%	91.33%
23	Kings	209	85.3	0.00	85.3	0.82%	92.15%
24	El Dorado	80	53.3	11.38	64.7	0.62%	92.77%
25	Madera	85	49.7	13.22	62.9	0.61%	93.38%
26	Yolo	90	44.8	14.66	59.5	0.57%	93.95%
27	Butte	60	48.7	2.68	51.3	0.49%	94.45%
28	Yuba	120	50.3	0.00	50.3	0.48%	94.93%
29	Placer	58	28.4	21.34	49.8	0.48%	95.41%
30	Santa Cruz	42	15.4	28.58	44.0	0.42%	95.83%
31	Shasta	56	29.0	15.00	44.0	0.42%	96.26%
32	Colusa	162	41.9	0.00	41.9	0.40%	96.66%
33	Humboldt	44	33.9	7.27	41.1	0.40%	97.06%
34	Napa	50	32.4	5.35	37.7	0.36%	97.42%
35	Nevada	30	19.7	14.00	33.7	0.32%	97.74%
36	San Luis Obispo	45	32.6	0.00	32.6	0.31%	98.06%
37	Del Norte	62	31.8	0.00	31.8	0.31%	98.36%
38	Imperial	72	23.8	0.00	23.8	0.23%	98.59%
39	Mendocino	43	21.8	0.00	21.8	0.21%	98.80%
40	Tehama	40	18.3	0.00	18.3	0.18%	98.98%
41	Glenn	22	16.4	1.85	18.3	0.18%	99.15%
42	Marin	40	17.4	0.84	18.3	0.18%	99.33%
43	Lake	40	11.7	5.67	17.3	0.17%	99.50%
44	Siskiyou	20	15.4	0.00	15.4	0.15%	99.64%
45	Lassen	40	9.7	2.00	11.7	0.11%	99.76%
46	San Benito	20	8.4	0.99	9.3	0.09%	99.85%
47	Trinity	28	8.0	0.00	8.0	0.08%	99.92%
48	Inyo	14	7.0	0.00	7.0	0.07%	99.99%
49	Mariposa	4	0.1	1.00	1.1	0.01%	100.00%
50	Mono	4	0.0	0.00	0.0	0.00%	100.00%
51	Sierra	0	0.0	0.00	0.0	0.00%	100.00%
52	Tuolumne	0	0.0	0.00	0.0	0.00%	100.00%
		<b>13,547</b>	<b>8,531.0</b>	<b>1,862.7</b>	<b>10,393.7</b>	<b>100.00%</b>	

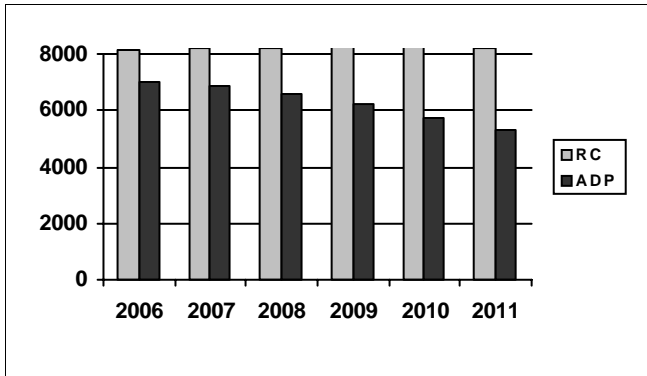
\*ADP on County Breakout Report may not equal ADP on other Summary Reports due to rounding

## Juvenile Detention Profile Survey

2nd Quarter Report 2011	One Day Snapshot		Average Daily Population								
	Rated Capacity	Misdemeanor		Felony		Pre-Disposition		Post-Disposition		Total ADP	
		Male	Female	Male	Female	Male	Female	Male	Female		
Juvenile Halls	8,137.0	13.9%	3.9%	29.6%	3.8%	2,361.7	414.3	2,204.8	344.5	5,325.2	
Camps / Ranches	5,410.0	6.2%	1.2%	22.8%	1.9%			2,916.0	289.8	3,205.8	
<b>Other Juveniles in the System</b>		<b>Male</b>	<b>Female</b>	<b>Male</b>	<b>Female</b>	<b>Male</b>	<b>Female</b>	<b>Male</b>	<b>Female</b>	<b>Total ADP</b>	
Juveniles on home supervision with electronic monitoring		3.0%	0.9%	3.9%	0.9%	340.0	74.5	444.2	100.2	958.9	
Juveniles on home supervision without electronic monitoring		2.0%	0.7%	3.2%	0.7%	257.2	68.1	307.8	86.0	719.1	
Juveniles alternative confinement programs		0.6%	0.1%	0.8%	0.1%	5.0	4.7	156.3	18.7	184.7	
<b>Grand Totals</b>		<b>25.6%</b>	<b>6.7%</b>	<b>60.3%</b>	<b>7.4%</b>	<b>2,963.8</b>	<b>561.6</b>	<b>6,029.0</b>	<b>839.2</b>	<b>10,393.7</b>	
<b>Mental Health Snapshot</b>											
Number of open mental health cases this day									3,360.3		
Number of juveniles receiving psychotropic medication									1,288.8		
<b>Crowding</b>											
Average daily population of juveniles in other jurisdictions DUE TO LACK OF SPACE									0.0		
Number of juveniles released early DUE TO LACK OF SPACE									100.3		
Average number of days that one or more facilities in a county exceeded the Rated Capacity									5.4		
<b>Average Bookings Per Month</b>											
Number of Juvenile Hall bookings/admissions									6,604.9		
Number of bookings for weapon-related offenses									451.6		
Number of 601 bookings									28.7		
Number of 777 bookings									1,406.9		
Number of direct file {WIC 602(b) and 707(d)} bookings									47.3		
<b>Final Month of the Quarter (One-Day Snapshot)</b>											
Detained for 707b Offense									1,028.6		
Awaiting placement									458.0		
Awaiting transport to a camp									448.0		
Awaiting transfer to Youth Authority									61.0		
Court commitments to juvenile hall (Ricardo M)									669.0		
Found unfit per 707.01 WIC									96.3		
Direct files to Adult Court-602(b) and 707(d) WIC									348.1		
Hospitalized outside detention facility for MEDICAL CARE									15.0		
Hospitalized outside detention facility for MENTAL HEALTH CARE									4.0		
Believed to be criminal illegal aliens									70.3		
<b>Average Length of Stay</b>											
Juvenile Hall (all releases)									24.7		
Juvenile Hall to Camps									61.6		
Juvenile Hall to other out-of-home placements (i.e. group homes or foster homes)									45.6		
Juvenile Hall who were found unfit (per juvenile court)									316.2		
Juvenile Hall who were direct filings to adult court									272.7		
Camps (all releases)									165.3		
<b>Cumulative Total for the Quarter</b>											
<b>Detention Behavior</b>						<b>Juvenile Halls</b>		<b>Camps / Ranches</b>		<b>Other Detention</b>	
Assaults by juveniles on staff						61.1		12.1		0.0	
Escapes						10.0		75.0		3.1	
Suicide Attempts						39.0		1.0		0.0	
Suicides						0.0		0.0		0.0	

## Second Quarter Report, 2011 - Juvenile Hall Data

### Rated Capacity RC and ADP for Juvenile Halls



The average daily population of juvenile halls increased by 64 this quarter but is 615 less than the same quarter of 2010.

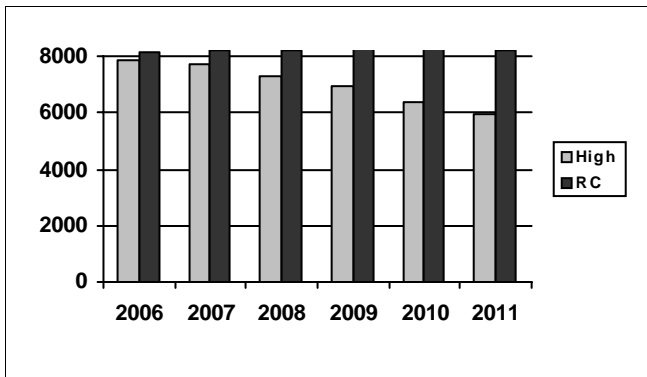
Summary of Juvenile Hall ADP

2006	2007	2008	2009	2010
7,017	6,858	6,614	6,197	5,721

2011 Summary of Juvenile Hall ADP

Q1	Q2	Average
5,261	5,325	5,293

### Juvenile Hall Highest One-Day Population and RC



The highest one day population of California juvenile halls increased by 86 but is 577 less than the same quarter of 2010.

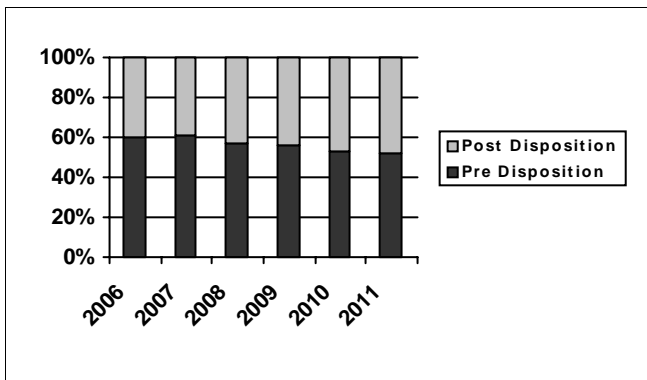
Summary of Juvenile Hall Highest One Day

2006	2007	2008	2009	2010
7,837	7,686	7,317	6,914	6,386

2011 Summary of Highest One-Day Population

Q1	Q2	Average
5,933	6,019	5,976

### Pre-Disposition in Juvenile Halls



The percentage of youth in juvenile halls who are in a pre-disposition status remained the same in the 2nd quarter of 2011.

Summary of Pre-Disposition in Juvenile Halls

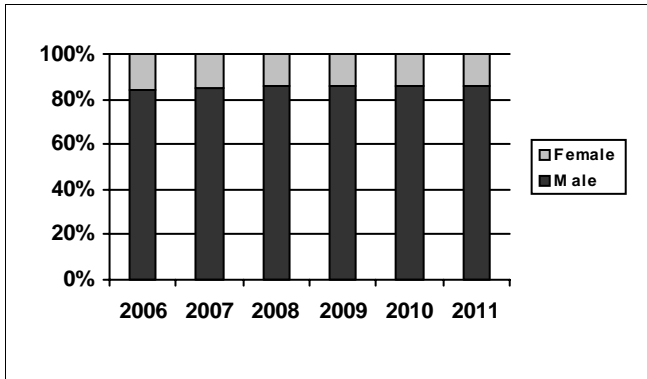
2006	2007	2008	2009	2010
60%	61%	57%	56%	53%

2011 Summary of Pre-Disposition Juvenile Halls

Q1	Q2	Average
52%	52%	52%

## Second Quarter Report, 2011 - Juvenile Hall Data

### Gender Distribution in Juvenile Halls



The percentage of male minors in juvenile halls this quarter was again 86%. That figure has been constant since 2008.

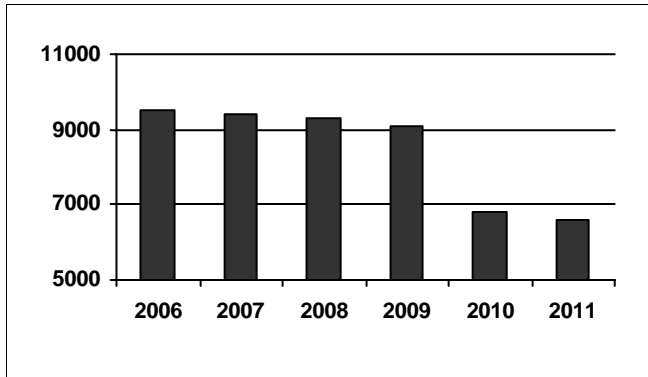
Summary of Males in Juvenile Halls

2006	2007	2008	2009	2010	2011
84%	85%	86%	86%	86%	86%

2011 Summary of Males in Juvenile Hall

Q1	Q2	Average
86%	86%	86%

### Average Number of Juveniles Booked per Month



The average number of monthly bookings increased by 12 over last quarter. Bookings decreased by 488 over the 2nd quarter of 2010.

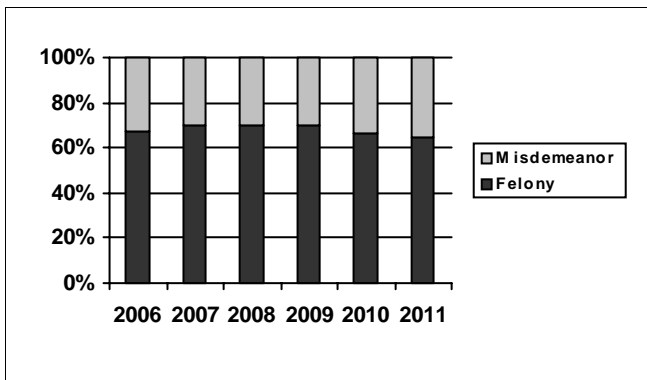
Summary of Juveniles Booked per Month

2006	2007	2008	2009	2010	2011
9,539	9,422	9,325	9,079	6,802	6,599

2011 Summary of Monthly Bookings

Q1	Q2	Average
6,593	6,605	6,599

### Distribution of Charge in Juvenile Halls



The percentage of felony offenders in juvenile halls decreased by 1% in the 2nd quarter.

Summary of Felony Charges in Juvenile Halls

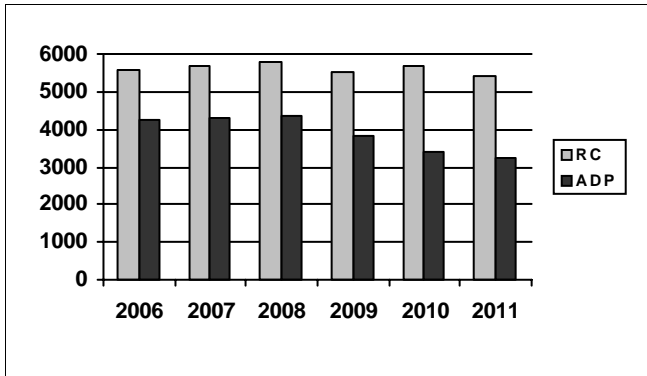
2006	2007	2008	2009	2010	2011
67%	70%	70%	70%	70%	66%

2011 Summary of Felony Charge Juvenile Hall

Q1	Q2	Average
66%	65%	65%

## Second Quarter Report, 2011 - Camp Data

### RC and ADP for Camps



The population of California's probation camps again decreased slightly over the previous quarter. There are 1,000 fewer youth in probation camps than there were 10 years ago.

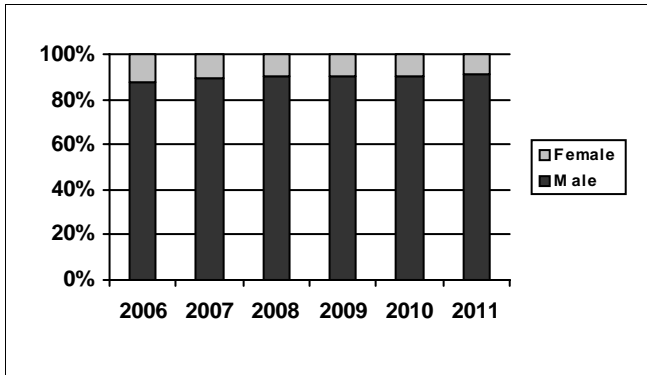
Summary of Camp ADP

2006	2007	2008	2009	2010	2011
4,252	4,278	4,338	3,841	3,374	

2011 Summary of Camp ADP

Q1	Q2	Average
3,221	3,206	3,213

### Gender Distribution in Camps



The percentage of male minors in camps is the same as reported in the previous two quarters. Female minors make up a lesser percentage of the camp population than the juvenile hall population.

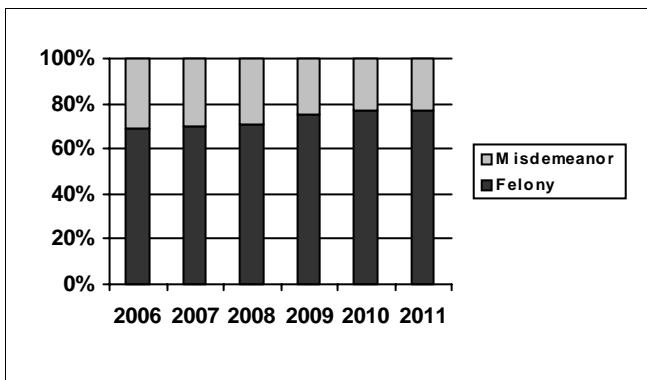
Summary of Males in Camps

2006	2007	2008	2009	2010	2011
88%	89%	90%	90%	90%	

2011 Summary of Males in Camps

Q1	Q2	Average
91%	91%	91%

### Distribution of Charge in Camps



The percentage of camp commitments for felony offenses of 77% is the same as what was reported in all but one quarter of 2010.

Summary of Felonies in Camps

2006	2007	2008	2009	2010	2011
69%	70%	71%	75%	77%	

2011 Summary of Felonies in Camps

Q1	Q2	Average
76%	77%	77%



## Instructions for Interpreting the Survey Report

**Capacity, Population and ADP Breakout** is designed to present the Juvenile Detention Profile Survey results for the major reporting categories.

- **Capacity:** this category presents the Rated Capacity (RC) in terms of the number of beds in juvenile halls and camps/ranches that meet the Corrections Standards Authority (CSA) standards.
- **High One-Day:** each jurisdiction reports for each month in the quarter, the juvenile hall and camp/ranch populations that, together, constituted the highest one-day count of the month.
- **Other:** this category refers to the sum of all juveniles who are receiving custody credit while on home supervision with or without electronic monitoring, or in alternative confinement programs.

**Breakout of Juveniles in Detention** is designed to present County-specific counts.

- **County-specific counts:** this page identifies the ADP for each county and the percent that county contributes to the total state juvenile detention population. The counties are ranked in descending order based on their percentage of the overall juvenile detention population in the state.

**Summary of Survey Results** is designed to present all the remaining Juvenile Detention Profile Survey results not already listed.

- **One-Day Snapshot:** the percentages in this section are percentages of the total ADP for juvenile halls, camps/ranches, and other juveniles in the system.
- **Average number of days that one or more facilities in a county exceeded the Rated Capacity:** this value is the result of taking all of the counties "number of days of crowding" and averaging the figures submitted by all the jurisdictions. If a jurisdiction had no crowding days, that jurisdiction was not included in the computation. In other words, the value presented indicates the typical number of crowding days per month experienced by jurisdictions that have had one or more days of crowding in the Second Quarter of Calendar Year 2011.
- **Average Length of Stay:** these numbers are averages for all juveniles in each category: 1) "juvenile hall (all releases)" is computed by first taking the mean length of stay for all juveniles released from juvenile halls in a jurisdiction. Next, all the jurisdictions' means are averaged to produce a statewide figure; 2) "juvenile hall to camps/ranches" is computed in the same fashion, but includes only those juveniles released from juvenile hall and placed in a camp or ranch; 3) "juvenile hall to other out-of-home placements" presents the average length of stay for that subset of juveniles.