



JAIL PROFILE SURVEY

**FOURTH QUARTER CALENDAR YEAR 2014
SURVEY RESULTS**



This page intentionally left blank.

EXPLANATION OF RESULTS

The following pages contain the Jail Profile Survey (JPS) results for the Fourth Quarter of Calendar Year 2014. Page 2 contains the quarterly totals based upon the monthly and quarterly data submitted to us by the participating jurisdictions. Pages 3 and 4 show the trend data for the last 10 years on variables we have been tracking. The information below provides explanations and clarifications of the data presented.

Page 2

- Unless otherwise noted, projected totals are based upon the average per day for the variable in question. For example, there was an average of 77,673 inmates per day in local jails (excluding Type I's) during October through December 2014.
- For some variables (other than "ADP"), we did not receive complete data from all jurisdictions. In such instances, we used statistical procedures to estimate the statewide total.
- The number of "Bookings Per Month" is the average of the monthly totals for October, November, and December 2014.
- For the following variables, the numbers presented are the totals as of the mid-quarter (i.e., November 15, 2014): "Pretrial Release", "Early Release", "2 Strike Inmates", "3 Strike Inmates", "Felony Warrants", "Misdemeanor Warrants", "Juveniles in Custody", and "Criminal / Illegal Aliens [undocumented aliens]".
- "Assaults On Staff" are defined as the total number of serious inmate assaults on staff (resulting in a crime report), statewide, during the Fourth Quarter of Calendar Year 2014.
- Note: Totals are subject to slight variation due to rounding.

Pages 3 and 4

- The data in the 10-Year Summary tables are based upon survey data that the Board of State and Community Corrections (BSCC) has gathered since the early 1980's.
- Prior to 1995, yearly averages were reported on an annual basis. Yearly averages from 1996 to the present time have been the average of the 12 calendar months. (In 1995, the yearly figure reported is the fourth quarter average, since we do not have data from the first three quarters.)

Please note:

- **Proposition 47** was voted into law on November 4, 2014, reducing penalties for certain low-level drug and property crimes from felony to misdemeanor.
- Each quarter, every county with Type II, III, and IV detention facilities submits their data to the BSCC. While we make every effort to review data for accuracy, including contacting individual counties for clarification, the BSCC cannot be responsible for data reporting errors made at the county level. This survey results report presents county data at the specific point in time in which it was posted (August 26, 2015). However, upon request of the county, data can be updated as needed.

BOARD OF STATE AND COMMUNITY CORRECTIONS JAIL PROFILE SURVEY

Reporting Period: October to December, 2014

County Jail Populations

| | |
|---------------------------------------|---------------------|
| ADP ^a | 77,673 ^b |
| Holding Areas | 1,162 |
| Average "Under the Roof" ^c | 78,835 ^d |
| Highest One Day Count | 84,937 ^e |

County Jail Populations

| | |
|--------------------------|---------------|
| Felony | 68,099 |
| Misdemeanor | 9,574 |
| Total | 77,673 |
| Non-Sentenced Males | 42,249 |
| Non-Sentenced Females | 5,883 |
| Sentenced Males | 25,005 |
| Sentenced Females | 4,536 |
| Total | 77,673 |
| Maximum Security Inmates | 23,649 |
| Medium Security Inmates | 33,324 |
| Minimum Security Inmates | 20,700 |
| Total | 77,673 |

Inmates From Other Jurisdictions

| | |
|---------------------------------|--------------|
| Housed on Federal Contract | 2,662 |
| Housed on Contract with CDC | 0 |
| From Other Counties on Contract | 181 |
| Awaiting Transport | 1,390 |
| Total | 4,233 |

Special Use Beds

| | |
|--------------------|-------|
| Medical Beds | 1,021 |
| Mental Health Beds | 2,482 |

Released Per Month Due to Lack of Space

| | |
|------------------|--------------------|
| Pretrial Release | 7,020 ^f |
| Early Release | 4,157 ^f |
| Total | 11,177 |

Inmates with 2 and 3 Strikes

| | |
|------------------|--------------------|
| 2 Strike Inmates | 4,543 ^g |
| 3 Strike Inmates | 1,582 ^g |
| Total | 6,125 |

Unservd Warrants

| | |
|----------------------|------------------------|
| Felony Warrants | 299,501 ^g |
| Misdemeanor Warrants | 1,475,521 ^g |
| Total | 1,775,022 |

Other Jail Profile Survey Variables

| | |
|---------------------------|---------------------|
| Bookings Per Month | 78,449 ^f |
| Juveniles in Custody | 0 ^f |
| Criminal / Illegal Aliens | 7,249 |
| Assaults On Staff | 368 |

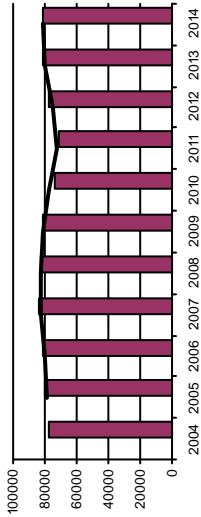
- a. The Average Daily Population for all jurisdictions (excluding Type I's) does not include inmates in holding areas.
- b. Unless otherwise indicated, the numbers reported are the average across the days in the quarter.
- c. "Under the Roof" is the sum of the Average Daily Population plus the average daily number of inmates in Holding Areas.
- d. Totals may not be the exact sum of the subtotals due to rounding.
- e. The sum of all Highest One Day inmate population counts from all jurisdictions.
- f. These data are collected on a monthly basis, this figure is an average of the total numbers collected each month during this quarter.
- g. These data are one-day snapshots collected at the end of the quarter.

Jail Profile Survey

2014

Average Daily Population

| 10 Year Summary | | | | | | | | | | |
|-----------------|--------|--------|--------|--------|--------|--------|--------|--------|--------|------|
| 2004 | 2005 | 2006 | 2007 | 2008 | 2009 | 2010 | 2011 | 2012 | 2013 | 2014 |
| 76,887 | 79,705 | 81,104 | 83,184 | 82,397 | 80,865 | 73,444 | 71,015 | 77,818 | 81,818 | |



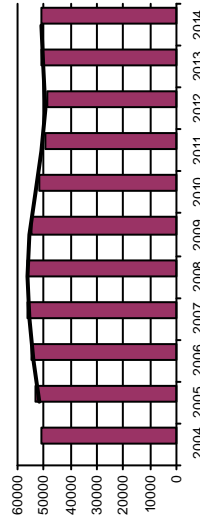
The Average Daily Population (ADP) of 77,673 for the fourth quarter 2014 represents a 6.3% decrease from the third quarter 2014. This is the second quarterly ADP decrease after twelve consecutive quarterly increases. The ADP for the fourth quarter 2014 decreased 5.6% from the same quarter a year ago.

Quarterly Results

| | Q1 | Q2 | Q3 | Q4 | Average |
|------|--------|--------|--------|--------|---------|
| 2013 | 80,842 | 82,019 | 82,145 | 82,249 | 81,818 |
| 2014 | 82,527 | 83,121 | 82,923 | 77,673 | 81,551 |

Non-sentenced ADP

| 10 Year Summary | | | | | | | | | | |
|-----------------|--------|--------|--------|--------|--------|--------|--------|--------|--------|------|
| 2004 | 2005 | 2006 | 2007 | 2008 | 2009 | 2010 | 2011 | 2012 | 2013 | 2014 |
| 50,715 | 53,357 | 54,585 | 56,571 | 56,232 | 54,589 | 52,059 | 49,705 | 48,975 | 51,296 | |



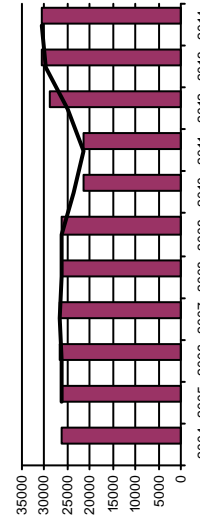
The Non-Sentenced ADP was 48,132 for the fourth quarter 2014, representing a 7.2% decrease from the third quarter 2014, as well as a 6.5% decrease from the fourth quarter 2013.

Quarterly Results

| | Q1 | Q2 | Q3 | Q4 | Average |
|------|--------|--------|--------|--------|---------|
| 2013 | 50,574 | 51,400 | 51,731 | 51,465 | 51,296 |
| 2014 | 51,488 | 51,763 | 51,865 | 48,132 | 50,806 |

Sentenced ADP

| 10 Year Summary | | | | | | | | | | |
|-----------------|--------|--------|--------|--------|--------|--------|--------|--------|--------|------|
| 2004 | 2005 | 2006 | 2007 | 2008 | 2009 | 2010 | 2011 | 2012 | 2013 | 2014 |
| 26,171 | 26,347 | 26,519 | 26,613 | 26,165 | 26,277 | 21,385 | 21,310 | 28,844 | 30,522 | |



The Sentenced ADP was 29,541 for the fourth quarter 2014, representing a 4.9% decrease from the third quarter 2014 and a decrease of 4.0% from the fourth quarter 2013.

Quarterly Results

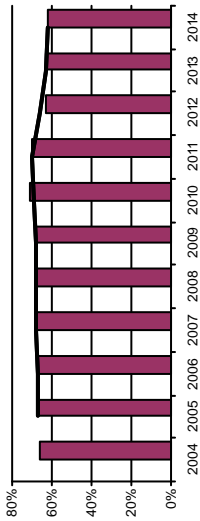
| | Q1 | Q2 | Q3 | Q4 | Average |
|------|--------|--------|--------|--------|---------|
| 2013 | 30,268 | 30,619 | 30,414 | 30,784 | 30,522 |
| 2014 | 31,039 | 31,358 | 31,058 | 29,541 | 30,746 |

Jail Profile Survey

2014

Percentage Non-sentenced

| 10 Year Summary | | | | | | | | | | |
|-----------------|------|------|------|------|------|------|------|------|------|------|
| 2004 | 2005 | 2006 | 2007 | 2008 | 2009 | 2010 | 2011 | 2012 | 2013 | 2014 |
| 66% | 67% | 67% | 68% | 68% | 68% | 71% | 70% | 63% | 63% | 63% |



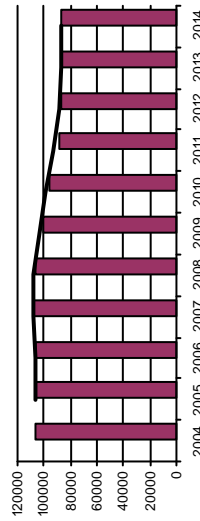
The Percentage of Non-Sentenced inmates for fourth quarter 2014 is 1% lower than the third quarter 2014.

Quarterly Results

| | Q1 | Q2 | Q3 | Q4 | Average |
|------|-----|-----|-----|-----|---------|
| 2013 | 63% | 63% | 63% | 63% | 63% |
| 2014 | 62% | 62% | 63% | 62% | 62% |

Average Number of Persons Booked Per Month

| 10 Year Summary | | | | | | | | | | |
|-----------------|---------|---------|---------|---------|---------|--------|--------|--------|--------|--------|
| 2004 | 2005 | 2006 | 2007 | 2008 | 2009 | 2010 | 2011 | 2012 | 2013 | 2014 |
| 106,862 | 107,120 | 106,868 | 108,238 | 107,086 | 101,223 | 96,460 | 88,614 | 87,560 | 86,718 | 86,718 |



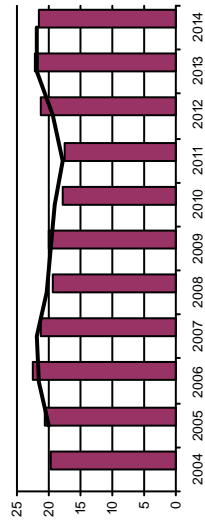
The Average Number of Persons Booked per Month in the fourth quarter 2014 was 78,449, representing a 14.3% decrease from the third quarter 2014 and a decrease of 6.7% from the fourth quarter 2013.

Quarterly Results

| | Q1 | Q2 | Q3 | Q4 | Average |
|------|--------|--------|--------|--------|---------|
| 2013 | 84,559 | 88,101 | 90,142 | 84,039 | 86,718 |
| 2014 | 86,375 | 91,107 | 91,525 | 78,449 | 86,855 |

Average Length Of Stay

| 10 Year Summary | | | | | | | | | | |
|-----------------|------|------|------|------|------|------|------|------|------|------|
| 2004 | 2005 | 2006 | 2007 | 2008 | 2009 | 2010 | 2011 | 2012 | 2013 | 2014 |
| 19.8 | 20.5 | 22.5 | 21.4 | 19.4 | 20.0 | 17.9 | 17.5 | 21.3 | 22.1 | 22.1 |



The Average Length of Stay (ALS) of 21.9 days in the fourth quarter 2014 increased from 20.5 days in the third quarter 2014. The ALS for the fourth quarter 2014 represents a 3.1% decrease from the fourth quarter 2013.

Quarterly Results

| | Q1 | Q2 | Q3 | Q4 | Average |
|------|------|------|------|------|---------|
| 2013 | 21.3 | 22.8 | 21.8 | 22.6 | 22.1 |
| 2014 | 22.1 | 22.0 | 20.5 | 21.9 | 21.6 |

Average Daily Population

Non-sentenced / Sentenced Male / Female

California County Jails - For Months Of October - December 2014

| Jurisdiction | Non-sentenced | | | Sentenced | | | Total |
|------------------------------------|---------------|--------|-------|-----------|--------|-------|--------|
| | Male | Female | Total | Male | Female | Total | |
| | # | # | % | # | # | % | |
| 1. Alameda Sheriff's Dept. | 2,186 | 185 | 92% | 2,371 | 60 | 91% | 3,021 |
| 2. Amador Sheriff's Dept. | 42 | 6 | 87% | 48 | 11 | 74% | 89 |
| 3. Butte Sheriff's Dept. | 265 | 52 | 84% | 317 | 41 | 84% | 576 |
| 4. Calaveras Sheriff's Dept. | 38 | 7 | 84% | 45 | 6 | 84% | 83 |
| 5. Colusa Sheriff's Dept. | 51 | 4 | 92% | 55 | 6 | 76% | 80 |
| 6. Contra Costa Sheriff's Dept. | 806 | 108 | 88% | 914 | 52 | 89% | 1,401 |
| 7. Del Norte Sheriff's Dept. | 41 | 5 | 88% | 46 | 13 | 72% | 93 |
| 8. El Dorado Sheriff's Dept. | 166 | 29 | 85% | 195 | 40 | 80% | 392 |
| 9. Fresno Sheriff's Dept. | 1,636 | 167 | 91% | 1,803 | 82 | 91% | 2,728 |
| 10. Glenn Sheriff's Dept. | 57 | 11 | 84% | 68 | 7 | 81% | 104 |
| 11. Humboldt Sheriff's Dept. | 164 | 23 | 88% | 187 | 15 | 88% | 307 |
| 12. Imperial Sheriff's Dept. | 292 | 32 | 90% | 324 | 30 | 84% | 513 |
| 13. Inyo Sheriff's Dept. | 25 | 3 | 89% | 28 | 10 | 75% | 67 |
| 14. Kern Sheriff's Dept. | 1,358 | 186 | 88% | 1,543 | 117 | 88% | 2,537 |
| 15. Kings Sheriff's Dept. | 409 | 88 | 82% | 497 | 11 | 76% | 542 |
| 16. Lake Sheriff's Dept. | 123 | 21 | 86% | 143 | 28 | 83% | 306 |
| 17. Lassen Sheriff's Dept. | 27 | 13 | 68% | 40 | 14 | 77% | 102 |
| 18. Los Angeles Sheriff's Dept. | 8,190 | 1,191 | 87% | 9,380 | 1,164 | 85% | 17,272 |
| 19. Madera Corrections Dept. | 334 | 47 | 88% | 381 | 6 | 89% | 438 |
| 20. Marin Sheriff's Dept. | 160 | 24 | 87% | 184 | 13 | 85% | 268 |
| 21. Mariposa Sheriff's Dept. | 22 | 4 | 86% | 26 | 3 | 81% | 42 |
| 22. Mendocino Sheriff's Dept. | 157 | 23 | 87% | 180 | 17 | 86% | 296 |
| 23. Merced Sheriff's Dept. | 543 | 56 | 91% | 599 | 30 | 87% | 841 |
| 24. Modoc Sheriff's Dept. | 20 | 3 | 88% | 23 | 1 | 79% | 29 |
| 25. Mono Sheriff's Dept. | 7 | 1 | 84% | 8 | 2 | 88% | 25 |
| 26. Monterey Sheriff's Dept. | 638 | 91 | 88% | 729 | 43 | 83% | 987 |
| 27. Napa Corrections Dept. | 112 | 15 | 88% | 127 | 3 | 95% | 176 |
| 28. Nevada Sheriff's Dept. | 124 | 36 | 78% | 159 | 9 | 85% | 218 |
| 29. Orange Sheriff's Dept. | 2,856 | 390 | 88% | 3,246 | 492 | 83% | 6,151 |
| 30. Placer Sheriff's Dept. | 393 | 55 | 88% | 448 | 30 | 84% | 633 |
| 31. Plumas Sheriff's Dept. | 28 | 5 | 86% | 33 | 3 | 71% | 44 |
| 32. Riverside Sheriff's Dept. | 2,209 | 271 | 89% | 2,481 | 203 | 86% | 3,916 |
| 33. Sacramento Sheriff's Dept. | 2,031 | 187 | 92% | 2,219 | 275 | 85% | 4,099 |
| 34. San Benito Sheriff's Dept. | 90 | 12 | 88% | 102 | 9 | 72% | 134 |
| 35. San Bernardino Sheriff's Dept. | 3,524 | 576 | 86% | 4,100 | 233 | 83% | 5,439 |

Average Daily Population

Non-sentenced / Sentenced Male / Female

California County Jails - For Months Of October - December 2014

| Jurisdiction | Non-sentenced | | | Sentenced | | | Total | | | | | | |
|------------------------------------|---------------|------------|--------------|------------|---------------|------------|---------------|------------|--------------|------------|---------------|------------|---------------|
| | Male | Female | Total | Male | Female | Total | | | | | | | |
| | # | % | # | % | # | % | | | | | | | |
| 36. San Diego Sheriff's Dept. | 2,450 | 85% | 416 | 15% | 2,866 | 53% | 2,123 | 84% | 413 | 16% | 2,536 | 47% | 5,402 |
| 37. San Diego Work Furlough | 3 | 100% | 0 | 0% | 3 | 1% | 244 | 67% | 123 | 33% | 367 | 99% | 370 |
| 38. San Francisco Sheriff's Dept. | 932 | 90% | 101 | 10% | 1,032 | 85% | 165 | 90% | 18 | 10% | 183 | 15% | 1,215 |
| 39. San Joaquin Sheriff's Dept. | 787 | 91% | 82 | 9% | 869 | 64% | 417 | 87% | 63 | 13% | 479 | 36% | 1,348 |
| 40. San Luis Obispo Sheriff's Dept | 252 | 85% | 44 | 15% | 297 | 49% | 256 | 83% | 51 | 17% | 307 | 51% | 603 |
| 41. San Mateo Sheriff's Dept. | 527 | 88% | 72 | 12% | 600 | 66% | 257 | 82% | 55 | 18% | 313 | 34% | 912 |
| 42. Santa Ana Police Dept. | 234 | 75% | 77 | 25% | 311 | 100% | 0 | 0% | 0 | 0% | 0 | 0% | 311 |
| 43. Santa Barbara Sheriff's Dept. | 541 | 85% | 94 | 15% | 635 | 72% | 209 | 86% | 34 | 14% | 242 | 28% | 877 |
| 44. Santa Clara Corrections Dept. | 2,457 | 87% | 352 | 13% | 2,809 | 72% | 937 | 84% | 179 | 16% | 1,115 | 28% | 3,925 |
| 45. Santa Cruz Sheriff's Dept. | 249 | 89% | 29 | 11% | 278 | 67% | 122 | 88% | 17 | 12% | 139 | 33% | 417 |
| 46. Shasta Sheriff's Dept. | 206 | 85% | 38 | 15% | 244 | 74% | 75 | 86% | 13 | 14% | 88 | 26% | 332 |
| 47. Sierra Sheriff's Dept. | 2 | 75% | 1 | 25% | 3 | 73% | 1 | 100% | 0 | 0% | 1 | 27% | 4 |
| 48. Siskiyou Sheriff's Dept. | 75 | 88% | 11 | 12% | 86 | 86% | 12 | 90% | 1 | 10% | 14 | 14% | 99 |
| 49. Solano Sheriff's Dept. | 570 | 87% | 86 | 13% | 655 | 73% | 211 | 86% | 34 | 14% | 245 | 27% | 901 |
| 50. Sonoma Sheriff's Dept. | 440 | 83% | 89 | 17% | 529 | 50% | 441 | 83% | 93 | 17% | 534 | 50% | 1,063 |
| 51. Stanislaus Sheriff's Dept. | 773 | 89% | 92 | 11% | 865 | 74% | 253 | 85% | 44 | 15% | 297 | 26% | 1,162 |
| 52. Sutter Sheriff's Dept. | 144 | 85% | 26 | 15% | 170 | 76% | 40 | 73% | 15 | 27% | 54 | 24% | 224 |
| 53. Tehama Sheriff's Dept. | 81 | 85% | 15 | 15% | 96 | 51% | 75 | 83% | 15 | 17% | 90 | 49% | 186 |
| 54. Trinity Sheriff's Dept. | 30 | 88% | 4 | 12% | 34 | 66% | 16 | 92% | 1 | 8% | 17 | 34% | 51 |
| 55. Tulare Sheriff's Dept. | 890 | 89% | 107 | 11% | 997 | 60% | 547 | 82% | 119 | 18% | 666 | 40% | 1,663 |
| 56. Tuolumne Sheriff's Dept. | 93 | 80% | 23 | 20% | 116 | 82% | 18 | 72% | 7 | 28% | 25 | 18% | 141 |
| 57. Ventura Sheriff's Dept. | 859 | 88% | 121 | 12% | 980 | 59% | 551 | 82% | 124 | 18% | 675 | 41% | 1,655 |
| 58. Ventura Work Furlough | 0 | 0% | 0 | 0% | 0 | 0% | 48 | 79% | 13 | 21% | 61 | 100% | 61 |
| 59. Yolo Sheriff's Dept. | 252 | 85% | 46 | 15% | 297 | 71% | 104 | 87% | 16 | 13% | 120 | 29% | 417 |
| 60. Yuba Sheriff's Dept. | 277 | 89% | 34 | 11% | 312 | 81% | 62 | 84% | 12 | 16% | 74 | 19% | 385 |
| Statewide | 42,249 | 88% | 5,883 | 12% | 48,132 | 62% | 25,005 | 85% | 4,536 | 15% | 29,541 | 38% | 77,673 |

Jail Populations: Quarter 4, 2013 Versus Quarter 4, 2014

| Jurisdiction | Qtr 4, 2013 | Qtr 4, 2014 | Qtr 4, 2014 Minus Qtr 4, 2013 | Qtr 4, 2013 To Qtr 4, 2014 % +/- | % of Total Increase or Decrease | Cum % | Cum Total |
|---------------------------------|-------------|-------------|-------------------------------------|--|---------------------------------------|----------|--------------|
| Merced Sheriff's Dept. | 772 | 840 | 68 | 8.8% | 16.9% | 16.87% | 68 |
| San Diego Work Furlough | 318 | 370 | 52 | 16.4% | 12.9% | 29.78% | 120 |
| Mendocino Sheriff's Dept. | 249 | 296 | 47 | 18.9% | 11.7% | 41.44% | 167 |
| El Dorado Sheriff's Dept. | 348 | 393 | 45 | 12.9% | 11.2% | 52.61% | 212 |
| Ventura Sheriff's Dept. | 1,619 | 1,656 | 37 | 2.3% | 9.2% | 61.79% | 249 |
| Monterey Sheriff's Dept. | 961 | 988 | 27 | 2.8% | 6.7% | 68.49% | 276 |
| Tulare Sheriff's Dept. | 1,640 | 1,663 | 23 | 1.4% | 5.7% | 74.19% | 299 |
| Imperial Sheriff's Dept. | 494 | 513 | 19 | 3.8% | 4.7% | 78.91% | 318 |
| Nevada Sheriff's Dept. | 205 | 219 | 14 | 6.8% | 3.5% | 82.38% | 332 |
| Tehama Sheriff's Dept. | 173 | 186 | 13 | 7.5% | 3.2% | 85.61% | 345 |
| Colusa Sheriff's Dept. | 67 | 80 | 13 | 19.4% | 3.2% | 88.83% | 358 |
| Calaveras Sheriff's Dept. | 71 | 83 | 12 | 16.9% | 3.0% | 91.81% | 370 |
| Del Norte Sheriff's Dept. | 81 | 93 | 12 | 14.8% | 3.0% | 94.79% | 382 |
| San Benito Sheriff's Dept. | 125 | 134 | 9 | 7.2% | 2.2% | 97.02% | 391 |
| Shasta Sheriff's Dept. | 329 | 332 | 3 | 0.9% | 0.7% | 97.77% | 394 |
| Tuolumne Sheriff's Dept. | 138 | 141 | 3 | 2.2% | 0.7% | 98.51% | 397 |
| Trinity Sheriff's Dept. | 50 | 52 | 2 | 4.0% | 0.5% | 99.01% | 399 |
| Modoc Sheriff's Dept. | 26 | 28 | 2 | 7.7% | 0.5% | 99.50% | 401 |
| Siskiyou Sheriff's Dept. | 98 | 99 | 1 | 1.0% | 0.2% | 99.75% | 402 |
| Glenn Sheriff's Dept. | 103 | 104 | 1 | 1.0% | 0.2% | 100.00% | 403 |
| Sierra Sheriff's Dept. | 5 | 4 | -1 | -20.0% | 0.0% | 0.02% | -1 |
| Sutter Sheriff's Dept. | 226 | 224 | -2 | -0.9% | 0.0% | 0.06% | -3 |
| Plumas Sheriff's Dept. | 48 | 45 | -3 | -6.2% | 0.1% | 0.12% | -6 |
| Inyo Sheriff's Dept. | 70 | 66 | -4 | -5.7% | 0.1% | 0.20% | -10 |
| Amador Sheriff's Dept. | 95 | 89 | -6 | -6.3% | 0.1% | 0.32% | -16 |
| Marin Sheriff's Dept. | 276 | 268 | -8 | -2.9% | 0.2% | 0.48% | -24 |
| Mariposa Sheriff's Dept. | 51 | 42 | -9 | -17.6% | 0.2% | 0.66% | -33 |
| Placer Sheriff's Dept. | 642 | 633 | -9 | -1.4% | 0.2% | 0.84% | -42 |
| Riverside Sheriff's Dept. | 3,926 | 3,917 | -9 | -0.2% | 0.2% | 1.03% | -51 |
| Mono Sheriff's Dept. | 36 | 24 | -12 | -33.3% | 0.2% | 1.27% | -63 |
| Butte Sheriff's Dept. | 591 | 577 | -14 | -2.4% | 0.3% | 1.55% | -77 |
| Ventura Work Furlough | 76 | 62 | -14 | -18.4% | 0.3% | 1.83% | -91 |
| Yuba Sheriff's Dept. | 400 | 385 | -15 | -3.8% | 0.3% | 2.13% | -106 |
| Lake Sheriff's Dept. | 323 | 307 | -16 | -5.0% | 0.3% | 2.45% | -122 |
| Madera Corrections Dept. | 454 | 437 | -17 | -3.7% | 0.3% | 2.79% | -139 |
| Solano Sheriff's Dept. | 922 | 900 | -22 | -2.4% | 0.4% | 3.24% | -161 |
| San Francisco Sheriff's Dept. | 1,248 | 1,215 | -33 | -2.6% | 0.7% | 3.90% | -194 |
| Yolo Sheriff's Dept. | 451 | 417 | -34 | -7.5% | 0.7% | 4.58% | -228 |
| Lassen Sheriff's Dept. | 135 | 101 | -34 | -25.2% | 0.7% | 5.27% | -262 |
| Stanislaus Sheriff's Dept. | 1,202 | 1,161 | -41 | -3.4% | 0.8% | 6.09% | -303 |
| Kern Sheriff's Dept. | 2,581 | 2,537 | -44 | -1.7% | 0.9% | 6.98% | -347 |
| Santa Cruz Sheriff's Dept. | 462 | 417 | -45 | -9.7% | 0.9% | 7.88% | -392 |
| Kings Sheriff's Dept. | 590 | 542 | -48 | -8.1% | 1.0% | 8.85% | -440 |
| Sonoma Sheriff's Dept. | 1,115 | 1,063 | -52 | -4.7% | 1.0% | 9.89% | -492 |
| San Joaquin Sheriff's Dept. | 1,400 | 1,348 | -52 | -3.7% | 1.0% | 10.94% | -544 |
| Humboldt Sheriff's Dept. | 370 | 307 | -63 | -17.0% | 1.3% | 12.20% | -607 |
| Napa Corrections Dept. | 247 | 177 | -70 | -28.3% | 1.4% | 13.61% | -677 |
| San Luis Obispo Sheriff's Dept. | 682 | 603 | -79 | -11.6% | 1.6% | 15.20% | -756 |
| Santa Ana Police Dept. | 430 | 310 | -120 | -27.9% | 2.4% | 17.61% | -876 |
| Santa Barbara Sheriff's Dept. | 998 | 877 | -121 | -12.1% | 2.4% | 20.04% | -997 |
| San Mateo Sheriff's Dept. | 1,059 | 912 | -147 | -13.9% | 3.0% | 23.00% | -1,144 |
| Sacramento Sheriff's Dept. | 4,246 | 4,099 | -147 | -3.5% | 3.0% | 25.95% | -1,291 |
| Santa Clara Corrections Dept. | 4,080 | 3,925 | -155 | -3.8% | 3.1% | 29.07% | -1,446 |
| Contra Costa Sheriff's Dept. | 1,577 | 1,401 | -176 | -11.2% | 3.5% | 32.61% | -1,622 |
| Fresno Sheriff's Dept. | 2,968 | 2,728 | -240 | -8.1% | 4.8% | 37.43% | -1,862 |
| San Bernardino Sheriff's Dept. | 5,790 | 5,440 | -350 | -6.0% | 7.0% | 44.47% | -2,212 |
| San Diego Sheriff's Dept. | 5,764 | 5,402 | -362 | -6.3% | 7.3% | 51.75% | -2,574 |
| Alameda Sheriff's Dept. | 3,428 | 3,021 | -407 | -11.9% | 8.2% | 59.93% | -2,981 |
| Orange Sheriff's Dept. | 6,900 | 6,151 | -749 | -10.9% | 15.1% | 74.99% | -3,730 |
| Los Angeles Sheriff's Dept. | 18,516 | 17,272 | -1,244 | -6.7% | 25.0% | 100.00% | -4,974 |

Note: Totals subject to slight variation due to rounding

| | |
|-----------------|--------|
| Total Increase: | 403 |
| Total Decrease: | -4,974 |

INTERPRETATION OF TABLE

Jail Populations: Fourth Quarter Calendar Year 2013 versus Fourth Quarter Calendar Year 2014 (page 7)

This table:

- summarizes the Average Daily Population (ADP) results for the 60 jurisdictions in California reporting data from Type II, III, and IV jails;
- summarizes jurisdiction ADP results for the most recent quarter (third column from left);
- compares jurisdiction ADP for the most recent quarter with the same quarter last year (second column from left);
- ranks the jurisdictions in terms of gains or losses in ADP from high to low (fourth column from left);
- lists the percentage of growth or decline in ADP for each jurisdiction (fifth column from left);
- lists the percentage of the overall state increase or decrease in ADP that is represented by each jurisdiction (sixth column from left);
- lists by jurisdiction the cumulative percentage increase and decrease in the state ADP (seventh column from left), starting with the jurisdiction with the largest percentage of increase and proceeding to the jurisdiction with the largest percentage of decrease;
- lists by jurisdiction the cumulative total increase and decrease in the state ADP (eighth column from left), starting with the jurisdiction with the highest increase first and proceeding to the jurisdiction with the highest decrease last; and,
- lists the jurisdictions that experienced decreases in their ADP as shaded.

Some important conclusions from this table are:

1. The two numbers at the bottom indicate the “Total Increase” in ADP (in this case 403) and “Total Decrease” in ADP (4,974). Specifically, the jurisdictions experiencing increases had a total increase of 403 ADP, and the jurisdictions experiencing decreases had a total decrease of 4,974 ADP. Subtracting 4,974 from 403 produces the overall decrease of 4,571 between the Fourth Quarter of Calendar Year 2013 and the Fourth Quarter of Calendar Year 2014.
2. The Merced Sheriff’s Department’s ADP increase of 68 is 16.9% of the total increase of 403. Twenty jurisdictions had increases (Merced Sheriff’s Department to Glenn Sheriff’s Department). When you get to Glenn Sheriff’s Department, you have accounted for 100% of the increase (100% of the cumulative total of 403).
3. Jurisdictions that experienced a decrease in ADP are listed from smallest decrease to largest decrease (Sierra Sheriff’s Department to Los Angeles Sheriff’s Department). When you get to the bottom of the table, you have accounted for 100% of the total decrease of 4,974 inmates.
4. The cumulative percentage of ADP increase for the top four jurisdictions (Merced Sheriff’s Department, San Diego Work Furlough, Mendocino Sheriff’s Department, and El Dorado Sheriff’s Department) is 52.7%. Four jurisdictions (San Diego Sheriff’s Department, Alameda Sheriff’s Department, Orange Sheriff’s Department, and Los Angeles Sheriff’s Department) account for 55.6% of the total decrease.