

# JUVENILE DETENTION PROFILE SURVEY



**FIRST QUARTER  
2011**

Corrections Standards Authority  
Facilities Standards and Operations Division  
600 Bercut Drive  
Sacramento CA 95811  
(916) 445-5073  
[www.csa.ca.gov](http://www.csa.ca.gov)

## JUVENILE DETENTION PROFILE SURVEY

### EXPLANATION OF RESULTS

The following link titles contain the Juvenile Detention Profile Survey results for the First Quarter of Calendar Year 2011. **Capacity, Population and ADP Breakout** contains totals for major categories such as Highest One-Day Population, Average Daily Population (ADP), gender, and the age range of detained minors. **Breakout of Juveniles in Detention** contains information regarding counties' ADP and Rated Capacity (RC) breakouts and **Summary of Survey Results** contains information about a wide range of juvenile detention facility issues including crowding, mental health needs, average length of stay, and number of bookings.

***Juvenile Hall Data – Part 1 & 2, and Camp Data contains trend information compiled from 2006 through the first quarter of calendar year 2011. The trend data is separated into Juvenile Hall related data and Camp related data.***

Please keep the following in mind when reviewing this information:

- For Overall Capacity, Crowding (highest one-day population-the count of minors in detention on the day of each county's highest population) and ADP (the average daily detention population for the reporting period), we have complete data from all jurisdictions in the state that operate juvenile detention facilities.
- Each jurisdiction provides us with the average population, computed across all the days in the month, for each of the three months in the quarter. The weighted average across the three months is then computed for each jurisdiction (with the monthly averages weighted by the number of days in the month). The jurisdictions ADPs are then combined to produce the state's total ADP.
- For some variables (other than ADP), we did not receive complete data from all jurisdictions. In such instances, we used statistical procedures to estimate the statewide total.
- Felony/misdemeanor, gender counts, and age-range breakouts are based upon a one-day snapshot (on the 15<sup>th</sup> day of the final month of the quarter). These values are used to determine the percentage of the population in each felony/misdemeanor, gender, and age category. The percentages are then applied to the Total ADP to project the expected ADP in each of the felony/misdemeanor, gender, and age-range categories.
- ***Please note:*** *Each quarter, every county with juvenile detention facilities submits their data to the CSA. While we make every effort to review data for accuracy, including contacting individual counties for clarification, CSA cannot be responsible for data reporting errors made at the county level.*

**California Corrections Standards Authority**  
**Juvenile Detention Profile Survey - 1st Quarter, 2011**  
**Overall Capacity, Population and ADP**

Overall Capacity and Population							
	JUVENILE HALL		CAMPS		OTHER	TOTAL	
ADP	5,261.1		3,221.2		1,874.7	10,357.1	
Percent of Total	50.8%		31.1%		18.1%	100.0%	
RC *	8,268.1		5,410.0			13,678.1	
High One Day	5,933.0		2,141.0			8,074.0	

Gender by Detention Type								
	JUVENILE HALL		CAMPS		OTHER		TOTAL	
GENDER	ADP	%	ADP	%	ADP	%	ADP	%
Male	4,516.1	85.8%	2,919.8	90.6%	1,531.5	81.7%	8,967.4	86.6%
Female	745.0	14.2%	301.4	9.4%	343.2	18.3%	1,389.6	13.4%
<b>TOTAL</b>	<b>5,261.1</b>	<b>100.0%</b>	<b>3,221.2</b>	<b>100.0%</b>	<b>1,874.7</b>	<b>100.0%</b>	<b>10,357.1</b>	<b>100.0%</b>

Disposition by Gender for Juvenile Halls							
	MALE		FEMALE		TOTAL		
DISPOSITION	Number	%	Number	%	Number	%	
Pre-Disposition	2,316.4	51.3%	420.4	56.4%	2,736.8	52.0%	
Post-Disposition	2,199.6	48.7%	324.6	43.6%	2,524.3	48.0%	
<b>TOTAL</b>	<b>4,516.1</b>	<b>100.0%</b>	<b>745.0</b>	<b>100.0%</b>	<b>5,261.1</b>	<b>100.0%</b>	

Disposition by Gender for Other Detention							
	MALE		FEMALE		TOTAL		
DISPOSITION	Number	%	Number	%	Number	%	
Pre-Disposition	622.9	40.7%	149.9	43.7%	772.8	41.2%	
Post-Disposition	908.6	59.3%	193.3	56.3%	1,101.9	58.8%	
<b>TOTAL</b>	<b>1,531.5</b>	<b>100.0%</b>	<b>343.2</b>	<b>100.0%</b>	<b>1,874.7</b>	<b>100.0%</b>	

Age Range by Type of Detention (One-Day Snapshot)							
	JUVENILE HALL		CAMPS		TOTAL		
AGE RANGES	Number	%	Number	%	Number	%	
Under 12	5.1	0.1%	0.0	0.0%	5.1	0.1%	
12 to 14	618.7	11.9%	145.0	4.3%	763.7	8.9%	
15 to 17	4,118.6	79.2%	2,359.0	70.8%	6,477.6	75.9%	
18 _Over	460.1	8.8%	830.0	24.9%	1,290.1	15.1%	
<b>TOTAL</b>	<b>5,202.5</b>	<b>100.0%</b>	<b>3,334.0</b>	<b>100.0%</b>	<b>8,536.5</b>	<b>100.0%</b>	

\* RC is Rated Capacity which is the number of beds that comply with standards set forth in Title 24, California Code of Regulations.

**County Breakout Report - 1st Quarter, 2011  
Facilities and Alternative Detention**

	<b>County</b>	<b>Rated Capacity</b>	<b>Facilities Detention</b>	<b>Other Detention</b>	<b>ADP</b>	<b>Percent of Total</b>	<b>Cumulative Percent</b>
1	Los Angeles	4,144	2,307.3	287.51	2,594.8	25.05%	25.05%
2	San Diego	1,105	797.0	230.27	1,027.3	9.92%	34.97%
3	Orange	797	550.2	75.92	626.2	6.05%	41.02%
4	Santa Clara	538	325.8	171.00	496.8	4.80%	45.81%
5	Fresno	450	349.6	127.86	477.5	4.61%	50.42%
6	Sacramento	270	207.8	200.18	408.0	3.94%	54.36%
7	Kern	475	386.7	11.37	398.1	3.84%	58.21%
8	Riverside	582	358.9	18.63	377.6	3.65%	61.85%
9	San Bernardino	551	342.2	0.00	342.2	3.30%	65.16%
10	Alameda	463	250.9	43.36	294.3	2.84%	68.00%
11	San Mateo	274	166.0	126.99	293.0	2.83%	70.83%
12	Contra Costa	290	258.3	32.72	291.1	2.81%	73.64%
13	Tulare	330	181.0	79.09	260.1	2.51%	76.15%
14	San Francisco	234	111.7	115.36	227.1	2.19%	78.34%
15	Sonoma	188	122.4	50.13	172.6	1.67%	80.01%
16	Santa Barbara	272	172.4	0.00	172.4	1.66%	81.67%
17	Monterey	190	143.4	28.48	171.9	1.66%	83.33%
18	Stanislaus	158	130.9	40.02	171.0	1.65%	84.98%
19	San Joaquin	224	163.8	0.00	163.8	1.58%	86.56%
20	Ventura	295	161.9	0.00	161.9	1.56%	88.13%
21	Merced	120	95.1	60.64	155.7	1.50%	89.63%
22	Solano	148	107.2	19.81	127.0	1.23%	90.86%
23	Kings	209	91.8	0.00	91.8	0.89%	91.74%
24	El Dorado	80	60.1	14.00	74.1	0.72%	92.46%
25	Placer	58	42.3	26.65	68.9	0.67%	93.12%
26	Yolo	90	50.2	11.63	61.8	0.60%	93.72%
27	Madera	85	41.3	11.01	52.3	0.50%	94.22%
28	Yuba	120	49.9	0.00	49.9	0.48%	94.71%
29	Shasta	56	30.3	18.31	48.6	0.47%	95.17%
30	Colusa	162	48.5	0.00	48.5	0.47%	95.64%
31	Butte	60	44.1	3.97	48.1	0.46%	96.11%
32	Humboldt	44	35.4	7.05	42.5	0.41%	96.52%
33	Napa	50	30.9	11.30	42.2	0.41%	96.92%
34	San Luis Obispo	45	35.9	3.41	39.3	0.38%	97.30%
35	Nevada	30	20.7	16.69	37.4	0.36%	97.67%
36	Santa Cruz	42	18.4	17.75	36.2	0.35%	98.01%
37	Del Norte	62	29.0	0.00	29.0	0.28%	98.29%
38	Imperial	72	24.6	0.00	24.6	0.24%	98.53%
39	Marin	40	20.0	3.94	23.9	0.23%	98.76%
40	Mendocino	43	20.8	0.00	20.8	0.20%	98.96%
41	Tehama	40	16.4	0.00	16.4	0.16%	99.12%
42	Lake	40	14.0	2.34	16.3	0.16%	99.28%
43	Lassen	40	10.1	5.34	15.4	0.15%	99.43%
44	Glenn	22	14.7	0.00	14.7	0.14%	99.57%
45	Siskiyou	20	12.0	0.00	12.0	0.12%	99.69%
46	San Benito	20	10.7	1.34	12.0	0.12%	99.80%
47	Inyo	14	10.6	0.00	10.6	0.10%	99.90%
48	Trinity	28	8.9	0.00	8.9	0.09%	99.99%
49	Mariposa	4	0.2	0.69	0.9	0.01%	100.00%
50	Mono	4	0.0	0.00	0.0	0.00%	100.00%
51	Sierra	0	0.0	0.00	0.0	0.00%	100.00%
52	Tuolumne	0	0.0	0.00	0.0	0.00%	100.00%
		<b>13,678</b>	<b>8,482.3</b>	<b>1,874.7</b>	<b>10,357.1</b>	<b>100.00%</b>	

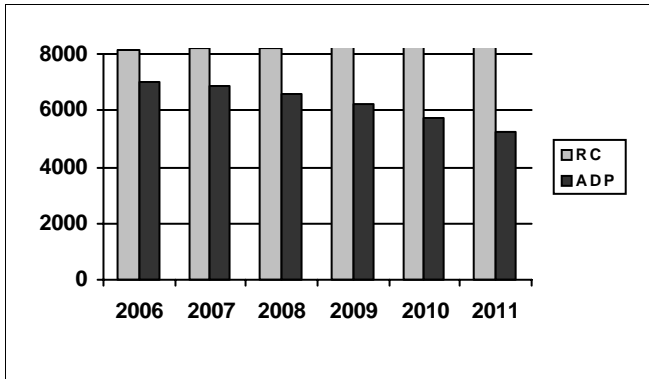
\*ADP on County Breakout Report may not equal ADP on other Summary Reports due to rounding

## Juvenile Detention Profile Survey

1st Quarter Report 2011	One Day Snapshot		Average Daily Population								
	Rated Capacity	Misdemeanor		Felony		Pre-Disposition		Post-Disposition		Total ADP	
		Male	Female	Male	Female	Male	Female	Male	Female		
Juvenile Halls	8,268.1	13.5%	3.6%	30.0%	3.5%	2,316.4	420.4	2,199.6	324.6	5,261.1	
Camps / Ranches	5,410.0	6.5%	1.2%	23.2%	1.8%			2,919.8	301.4	3,221.2	
<b>Other Juveniles in the System</b>		<b>Male</b>	<b>Female</b>	<b>Male</b>	<b>Female</b>	<b>Male</b>	<b>Female</b>	<b>Male</b>	<b>Female</b>	<b>Total ADP</b>	
Juveniles on home supervision with electronic monitoring		3.0%	0.8%	4.1%	0.8%	371.4	80.5	449.8	99.3	1,001.1	
Juveniles on home supervision without electronic monitoring		1.9%	0.6%	2.9%	0.7%	240.6	65.7	279.4	72.5	658.2	
Juveniles alternative confinement programs		0.7%	0.1%	1.0%	0.1%	10.9	3.7	179.4	21.5	215.4	
<b>Grand Totals</b>		<b>25.7%</b>	<b>6.3%</b>	<b>61.1%</b>	<b>6.9%</b>	<b>2,939.4</b>	<b>570.3</b>	<b>6,028.0</b>	<b>819.3</b>	<b>10,357.1</b>	
<b>Mental Health Snapshot</b>											
Number of open mental health cases this day									3,264.5		
Number of juveniles receiving psychotropic medication									1,275.4		
<b>Crowding</b>											
Average daily population of juveniles in other jurisdictions DUE TO LACK OF SPACE									0.0		
Number of juveniles released early DUE TO LACK OF SPACE									66.9		
Average number of days that one or more facilities in a county exceeded the Rated Capacity									5.7		
<b>Average Bookings Per Month</b>											
Number of Juvenile Hall bookings/admissions									6,593.2		
Number of bookings for weapon-related offenses									482.7		
Number of 601 bookings									37.0		
Number of 777 bookings									1,433.2		
Number of direct file {WIC 602(b) and 707(d)} bookings									46.1		
<b>Final Month of the Quarter (One-Day Snapshot)</b>											
Detained for 707b Offense									959.4		
Awaiting placement									451.0		
Awaiting transport to a camp									417.6		
Awaiting transfer to Youth Authority									60.0		
Court commitments to juvenile hall (Ricardo M)									615.8		
Found unfit per 707.01 WIC									97.4		
Direct files to Adult Court-602(b) and 707(d) WIC									351.4		
Hospitalized outside detention facility for MEDICAL CARE									7.0		
Hospitalized outside detention facility for MENTAL HEALTH CARE									7.0		
Believed to be criminal illegal aliens									87.7		
<b>Average Length of Stay</b>											
Juvenile Hall (all releases)									28.1		
Juvenile Hall to Camps									64.1		
Juvenile Hall to other out-of-home placements (i.e. group homes or foster homes)									48.2		
Juvenile Hall who were found unfit (per juvenile court)									358.6		
Juvenile Hall who were direct filings to adult court									312.0		
Camps (all releases)									165.8		
<b>Cumulative Total for the Quarter</b>											
<b>Detention Behavior</b>						<b>Juvenile Halls</b>		<b>Camps / Ranches</b>		<b>Other Detention</b>	
Assaults by juveniles on staff						26.0		3.0		0.0	
Escapes						2.0		87.0		1.0	
Suicide Attempts						37.0		3.0		0.0	
Suicides						0.0		0.0		0.0	

# First Quarter Report, 2011 - Juvenile Hall Data

## Rated Capacity RC and ADP for Juvenile Halls

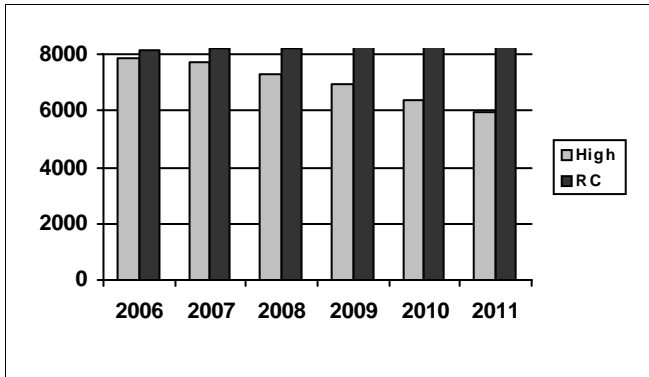


The average daily population decreased again in the 1st quarter of 2011. California juvenile halls housed an average of 703 fewer youth than the same quarter of 2010.

Summary of Juvenile Hall ADP				
2006	2007	2008	2009	2010
7,017	6,858	6,614	6,197	5,721

2011 Summary of Juvenile Hall ADP		
Q1		Average
5,261		5,261

## Juvenile Hall Highest One-Day Population and RC

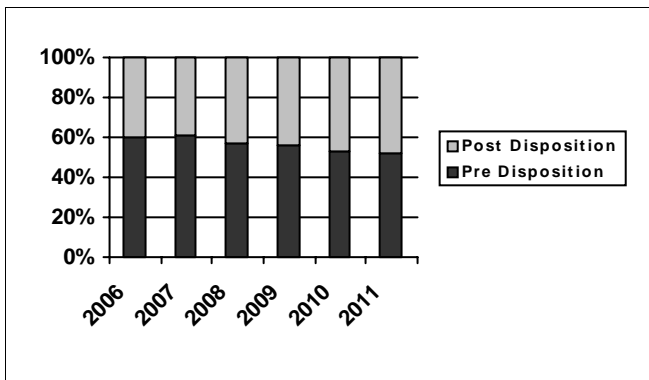


The highest one day population of California juvenile halls decreased again in the 1st quarter of 2011. The population on the date of highest population was 765 fewer than the same quarter in 2010.

Summary of Juvenile Hall Highest One Day				
2006	2007	2008	2009	2010
7,837	7,686	7,317	6,914	6,386

2011 Summary of Highest One-Day Population		
Q1		Average
5,933		5,933

## Pre-Disposition in Juvenile Halls



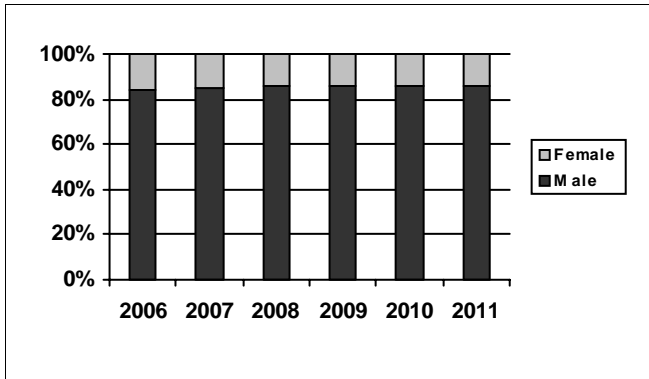
The percentage of youth in juvenile halls who are in a pre-disposition status continued its decline through the 1st quarter with a reduction of 2% over 1st quarter 2010. Several commitment facilities closed in fiscal year 2010-11, which may account for part of this decline, if those post-disposition youth were redirected into a juvenile hall commitment.

Summary of Pre-Disposition in Juvenile Halls				
2006	2007	2008	2009	2010
60%	61%	57%	56%	53%

2011 Summary of Pre-Disposition Juvenile Halls				
Q1				Average
52%				52%

# First Quarter Report, 2011 - Juvenile Hall Data

## Gender Distribution in Juvenile Halls

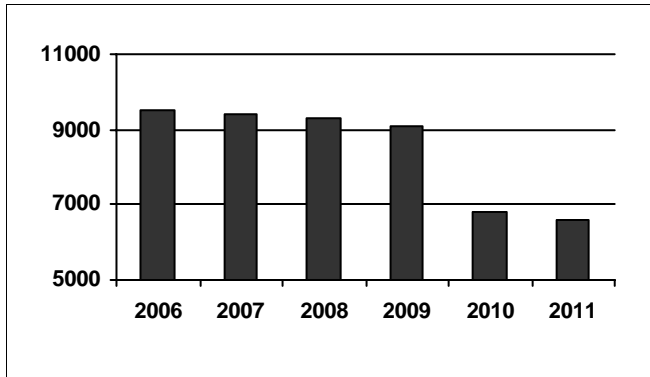


The percentage of male minors in juvenile halls this quarter was again 86%. That figure has been constant since 2008.

Summary of Males in Juvenile Halls				
2006	2007	2008	2009	2010
84%	85%	86%	86%	86%

2011 Summary of Males in Juvenile Hall		
Q1		Average
86%		86%

## Average Number of Juveniles Booked per Month

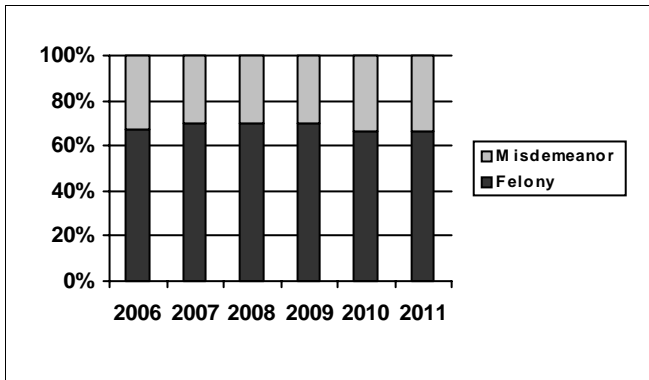


After 6 straight quarters of decline, the monthly average number of juvenile hall bookings increased by more than 200.

Summary of Juveniles Booked per Month				
2006	2007	2008	2009	2010
9,539	9,422	9,325	9,079	6,802

2011 Summary of Monthly Bookings		
Q1		Average
6,593		6,593

## Distribution of Charge in Juvenile Halls



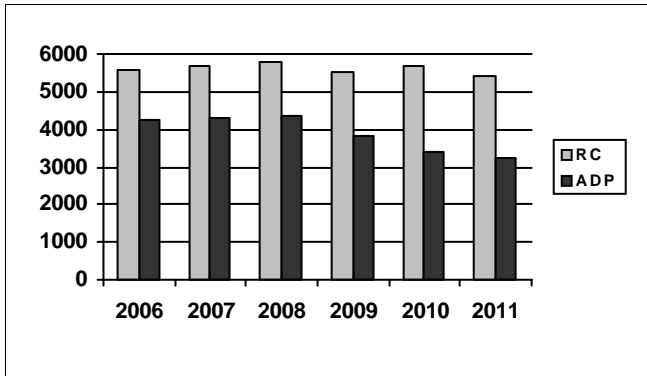
The percentage of felony offenders in juvenile halls has been constant for 5 quarters.

Summary of Felony Charges in Juvenile Halls				
2006	2007	2008	2009	2010
67%	70%	70%	70%	66%

2011 Summary of Felony Charge Juvenile Hall		
Q1		Average
66%		66%

# First Quarter Report, 2011 - Camp Data

## RC and ADP for Camps



The population of California's probation camps again decreased slightly over the previous quarter.

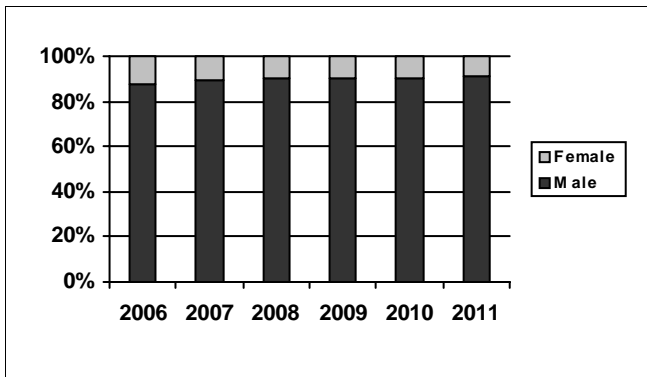
Summary of Camp ADP

2006	2007	2008	2009	2010
4,252	4,278	4,338	3,841	3,374

2011 Summary of Camp ADP

Q1	Average
3,221	3,221

## Gender Distribution in Camps



The percentage of male minors in camps is the same as reported in the previous quarter.

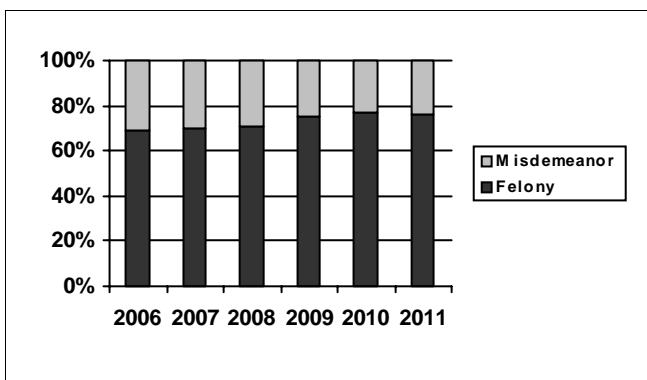
Summary of Males in Camps

2006	2007	2008	2009	2010
88%	89%	90%	90%	90%

2011 Summary of Males in Camps

Q1	Average
91%	91%

## Distribution of Charge in Camps



The percentage of camp commitments for felony offenses declined 1% from the 4th quarter 2010. It was equal to the percentage of felony commitments reported in the 1st quarter of 2010.

Summary of Felonies in Camps

2006	2007	2008	2009	2010
69%	70%	71%	75%	77%

2011 Summary of Felonies in Camps

Q1	Average
76%	76%



## Instructions for Interpreting the Survey Report

**Capacity, Population and ADP Breakout** is designed to present the Juvenile Detention Profile Survey results for the major reporting categories.

- **Capacity:** this category presents the Rated Capacity (RC) in terms of the number of beds in juvenile halls and camps/ranches that meet the Corrections Standards Authority (CSA) standards.
- **High One-Day:** each jurisdiction reports for each month in the quarter, the juvenile hall and camp/ranch populations that, together, constituted the highest one-day count of the month.
- **Other:** this category refers to the sum of all juveniles who are receiving custody credit while on home supervision with or without electronic monitoring, or in alternative confinement programs.

**Breakout of Juveniles in Detention** is designed to present County-specific counts.

- **County-specific counts:** this page identifies the ADP for each county and the percent that county contributes to the total state juvenile detention population. The counties are ranked in descending order based on their percentage of the overall juvenile detention population in the state.

**Summary of Survey Results** is designed to present all the remaining Juvenile Detention Profile Survey results not already listed.

- **One-Day Snapshot:** the percentages in this section are percentages of the total ADP for juvenile halls, camps/ranches, and other juveniles in the system.
- **Average number of days that one or more facilities in a county exceeded the Rated Capacity:** this value is the result of taking all of the counties "number of days of crowding" and averaging the figures submitted by all the jurisdictions. If a jurisdiction had no crowding days, that jurisdiction was not included in the computation. In other words, the value presented indicates the typical number of crowding days per month experienced by jurisdictions that have had one or more days of crowding in the First Quarter of Calendar Year 2011.
- **Average Length of Stay:** these numbers are averages for all juveniles in each category: 1) "juvenile hall (all releases)" is computed by first taking the mean length of stay for all juveniles released from juvenile halls in a jurisdiction. Next, all the jurisdictions' means are averaged to produce a statewide figure; 2) "juvenile hall to camps/ranches" is computed in the same fashion, but includes only those juveniles released from juvenile hall and placed in a camp or ranch; 3) "juvenile hall to other out-of-home placements" presents the average length of stay for that subset of juveniles.