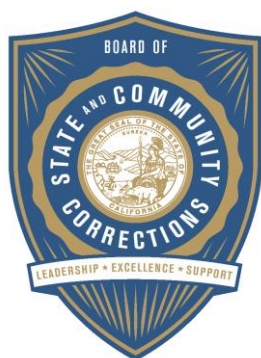


JAIL PROFILE SURVEY

.....

Third Quarter Calendar Year 2013 Survey Results



BOARD OF STATE AND COMMUNITY CORRECTIONS

FACILITIES STANDARDS AND OPERATIONS DIVISION
600 Bercut Drive, Sacramento, CA 95811
916.445.5073 PHONE
916.327.3317 FAX
bscc.ca.gov



EXPLANATION OF RESULTS

The following pages contain the Jail Profile Survey (JPS) results for the Third Quarter of Calendar Year 2013. Page 2 contains the quarterly totals based upon the monthly and quarterly data submitted to us by the participating jurisdictions. Pages 3 and 4 show the trend data for the last 10 years on variables we have been tracking. The information below provides explanations and clarifications of the data presented.

Page 2

- Unless otherwise noted, projected totals are based upon the average per day for the variable in question. For example, there was an average of 82,145 inmates per day in local jails (excluding Type I's) during July through September 2013.
- For some variables (other than "ADP"), we did not receive complete data from all jurisdictions. In such instances, we used statistical procedures to estimate the statewide total.
- The number of "Bookings Per Month" is the average of the monthly totals for July, August, and September 2013.
- For the following variables, the numbers presented are the totals as of the mid-quarter (i.e., August 15, 2013): "Pretrial Release", "Early Release", "2 Strike Inmates", "3 Strike Inmates", "Felony Warrants", "Misdemeanor Warrants", "Juveniles in Custody", and "Criminal / Illegal Aliens [undocumented aliens]".
- "Assaults On Staff" are defined as the total number of serious inmate assaults on staff (resulting in a crime report), statewide, during the Third Quarter of Calendar Year 2013.
- Note: Totals are subject to slight variation due to rounding.

Pages 3 and 4

- The data in the 10-Year Summary tables are based upon survey data that the Board of State and Community Corrections (BSCC) has gathered since the early 1980's.
- Prior to 1995, yearly averages were reported on an annual basis. Yearly averages from 1996 to the present time have been the average of the 12 calendar months. In 1995, the yearly figure reported is the fourth quarter average, since we do not have data from the first three quarters.

Please note: Each quarter, every county with Type II, III, and IV detention facilities submits their data to the BSCC. While we make every effort to review data for accuracy, including contacting individual counties for clarification, the BSCC cannot be responsible for data reporting errors made at the county level. While the county-specific data presented in this report is current as of April 23, 2014, all data are available for updates as needed.

BOARD OF STATE AND COMMUNITY CORRECTIONS JAIL PROFILE SURVEY

Reporting Period: July to September, 2013

County Jail Populations

ADP ^a	82,145 ^b
Holding Areas	1,443
Average "Under the Roof" ^c	83,588 ^d
Highest One Day Count	82,612 ^e

Special Use Beds

Medical Beds	1,226
Mental Health Beds	3,144

County Jail Populations

Felony	71,810
Misdemeanor	10,335
Total	82,145
Non-Sentenced Males	45,589
Non-Sentenced Females	6,142
Sentenced Males	25,747
Sentenced Females	4,667
Total	82,145
Maximum Security Inmates	23,783
Medium Security Inmates	35,410
Minimum Security Inmates	22,952
Total	82,145

Released Per Month Due to Lack of Space

Pretrial Release	7,667 ^f
Early Release	6,189 ^f
Total	13,856

Inmates with 2 and 3 Strikes

2 Strike Inmates	4,279 ^g
3 Strike Inmates	1,196 ^g
Total	5,475

Unservd Warrants

Felony Warrants	246,084 ^g
Misdemeanor Warrants	1,556,575 ^g
Total	1,802,659

Inmates From Other Jurisdictions

Housed on Federal Contract	3,073
Housed on Contract with CDC	7
From Other Counties on Contract	64
Awaiting Transport	1,557
Total	4,701

Other Jail Profile Survey Variables

Bookings Per Month	90,142 ^f
Juveniles in Custody	0 ^f
Criminal / Illegal Aliens	9,516
Assaults On Staff	366

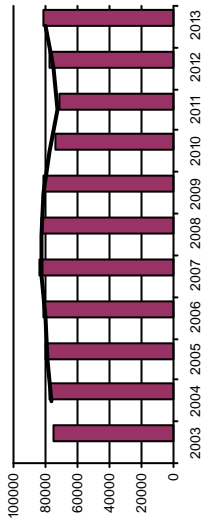
- a. The Average Daily Population for all jurisdictions (excluding Type I's) does not include inmates in holding areas.
- b. Unless otherwise indicated, the numbers reported are the average across the days in the quarter.
- c. "Under the Roof" is the sum of the Average Daily Population plus the average daily number of inmates in Holding Areas.
- d. Totals may not be the exact sum of the subtotals due to rounding.
- e. The sum of all Highest One Day inmate population counts from all jurisdictions.
- f. These data are collected on a monthly basis, this figure is an average of the total numbers collected each month during this quarter.
- g. These data are one-day snapshots collected at the end of the quarter.

Jail Profile Survey

2013

Average Daily Population

10 Year Summary										
2003	2004	2005	2006	2007	2008	2009	2010	2011	2012	2013
75,243	76,887	79,705	81,104	83,184	82,397	80,865	73,444	71,015	77,818	



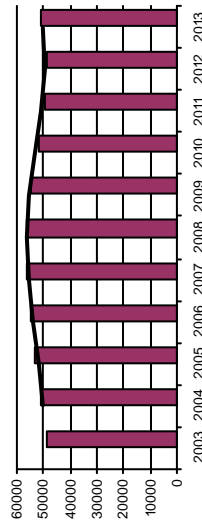
The Average Daily Population (ADP) of 82,145 for the third quarter 2013 represents a slight increase over the second quarter 2013, and reflects the ninth consecutive quarterly increase in ADP. The ADP for the third quarter 2013 represents a 3.7% increase over the third quarter 2012.

Quarterly Results

	Q1	Q2	Q3	Q4	Average
2012	74,527	77,340	79,229	80,136	77,818
2013	80,841	82,019	82,145		81,673

Non-sentenced ADP

10 Year Summary										
2003	2004	2005	2006	2007	2008	2009	2010	2011	2012	2013
49,121	50,715	53,357	54,585	56,571	56,232	54,589	52,059	49,705	48,975	



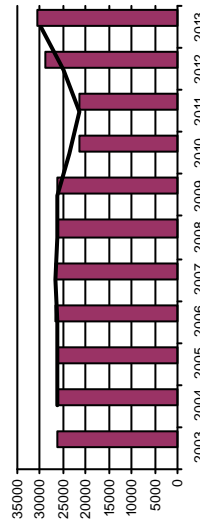
The Non-Sentenced ADP was 51,731 for the third quarter 2013, representing a slight increase over the second quarter 2013 and an increase of 4% over the third quarter 2012.

Quarterly Results

	Q1	Q2	Q3	Q4	Average
2012	47,675	48,189	49,703	50,309	51,240
2013	50,574	51,400	51,731		48,975

Sentenced ADP

10 Year Summary										
2003	2004	2005	2006	2007	2008	2009	2010	2011	2012	2013
26,121	26,171	26,347	26,519	26,613	26,165	26,277	21,385	21,310	28,844	



The Sentenced ADP was 30,414 for the third quarter 2013, representing a slight decrease from the second quarter 2013 and an increase of 3% over the third quarter 2012. The Sentenced ADP for the third quarter 2013 represents the first quarterly decrease in population since the second quarter 2011.

Quarterly Results

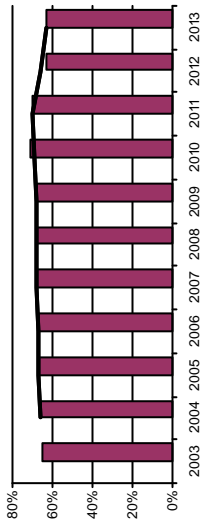
	Q1	Q2	Q3	Q4	Average
2012	26,853	29,152	29,526	29,827	28,844
2013	30,268	30,619	30,414		30,434

Jail Profile Survey

2013

Percentage Non-sentenced

10 Year Summary									
2003	2004	2005	2006	2007	2008	2009	2010	2011	2012
65%	66%	67%	67%	68%	68%	68%	71%	70%	63%



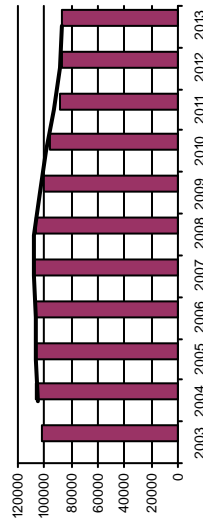
The Percentage of Non-Sentenced inmates for the third quarter 2013 remained unchanged at 63% from the second quarter 2013. In addition, the Percentage of Non-Sentenced inmates has remained the same since the third quarter 2012.

Quarterly Results

	Q1	Q2	Q3	Q4	Average
2012	64%	62%	63%	63%	63%
2013	63%	63%	63%	63%	63%

Average Number of Persons Booked Per Month

10 Year Summary									
2003	2004	2005	2006	2007	2008	2009	2010	2011	2012
102,217	106,862	107,120	106,868	108,238	107,086	101,223	96,460	88,614	87,560



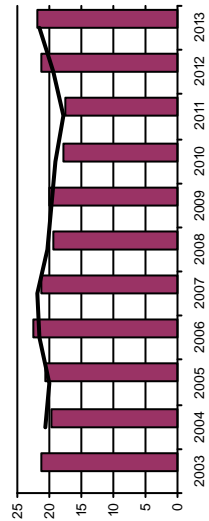
The Average Number of Persons Booked per Month in the third quarter 2013 of 90,142 represents an increase of 2.3% over the second quarter 2013 and a decrease of 1% from the third quarter 2012.

Quarterly Results

	Q1	Q2	Q3	Q4	Average
2012	86,851	89,373	91,084	82,946	87,560
2013	84,559	88,101	90,142		87,621

Average Length Of Stay

10 Year Summary									
2003	2004	2005	2006	2007	2008	2009	2010	2011	2012
21.2	19.8	20.5	22.5	21.4	19.4	20.0	17.9	17.5	21.3



The Average Length of Stay (ALS) of 21.8 days in the third quarter 2013 decreased 4.4% from 22.8 days in the second quarter 2013. The ALS for the third quarter 2013 represents a 7.4% increase over the ALS of 20.3 days for the third quarter 2012.

Quarterly Results

	Q1	Q2	Q3	Q4	Average
2012	23.1	20.3	20.3	21.5	21.3
2013	21.3	22.8	21.8		22.0

Average Daily Population

Non-sentenced / Sentenced Male / Female

California County Jails - For Months Of July - September 2013

	Non-sentenced			Sentenced			Total						
	Male	Female	Total	Male	Female	Total							
	#	%	#	%	#	%							
Jurisdiction													
1. Alameda Sheriff's Dept.	2,332	91%	237	9%	2,569	74%	786	89%	96	11%	882	26%	3,451
2. Amador Sheriff's Dept.	43	82%	9	18%	53	59%	28	78%	8	22%	36	41%	89
3. Butte Sheriff's Dept.	356	88%	46	12%	402	68%	158	83%	33	17%	191	32%	593
4. Calaveras Sheriff's Dept.	34	84%	6	16%	41	57%	27	90%	3	10%	30	43%	71
5. Colusa Sheriff's Dept.	34	82%	7	18%	41	62%	19	75%	6	25%	25	38%	66
6. Contra Costa Sheriff's Dept.	1,013	87%	154	13%	1,167	76%	340	93%	25	7%	365	24%	1,532
7. Del Norte Sheriff's Dept.	36	82%	8	18%	44	50%	34	75%	11	25%	45	50%	89
8. El Dorado Sheriff's Dept.	168	83%	34	17%	202	55%	131	80%	33	20%	164	45%	366
9. Fresno Sheriff's Dept.	1,955	92%	178	8%	2,133	69%	907	94%	57	6%	964	31%	3,097
10. Glenn Sheriff's Dept.	71	89%	9	11%	80	72%	24	77%	7	23%	31	28%	111
11. Humboldt Sheriff's Dept.	212	87%	32	13%	245	65%	111	86%	19	14%	129	35%	374
12. Imperial Sheriff's Dept.	231	88%	32	12%	263	48%	242	86%	40	14%	282	52%	545
13. Inyo Sheriff's Dept.	22	88%	3	12%	25	37%	37	83%	7	17%	44	63%	69
14. Kern Sheriff's Dept.	1,729	89%	221	11%	1,950	76%	532	88%	75	12%	608	24%	2,557
15. Kings Sheriff's Dept.	231	89%	30	11%	261	51%	196	80%	50	20%	246	49%	507
16. Lake Sheriff's Dept.	150	84%	29	16%	178	57%	113	83%	24	17%	137	43%	316
17. Lassen Sheriff's Dept.	35	78%	10	22%	45	36%	60	77%	18	23%	78	64%	123
18. Los Angeles Sheriff's Dept.	8,802	88%	1,235	12%	10,037	55%	7,011	85%	1,275	15%	8,286	45%	18,323
19. Madera Corrections Dept.	302	88%	42	12%	344	78%	78	80%	19	20%	97	22%	442
20. Marin Sheriff's Dept.	197	88%	27	12%	224	78%	53	83%	11	17%	64	22%	288
21. Mariposa Sheriff's Dept.	24	85%	4	15%	28	60%	16	85%	3	15%	18	40%	46
22. Mendocino Sheriff's Dept.	148	87%	22	13%	170	64%	77	81%	18	19%	95	36%	265
23. Merced Sheriff's Dept.	492	90%	52	10%	544	61%	307	89%	39	11%	346	39%	890
24. Modoc Sheriff's Dept.	12	88%	2	12%	14	58%	8	86%	1	14%	10	42%	23
25. Mono Sheriff's Dept.	11	83%	2	17%	14	39%	19	92%	2	8%	21	61%	35
26. Monterey Sheriff's Dept.	691	87%	108	13%	799	74%	238	87%	36	13%	274	26%	1,073
27. Napa Corrections Dept.	159	92%	14	8%	173	70%	67	89%	8	11%	75	30%	249
28. Nevada Sheriff's Dept.	112	83%	22	17%	135	85%	20	83%	4	17%	24	15%	158
29. Orange Sheriff's Dept.	3,134	88%	425	12%	3,558	52%	2,751	84%	526	16%	3,277	48%	6,835
30. Placer Sheriff's Dept.	358	88%	50	12%	409	65%	184	83%	37	17%	222	35%	630
31. Plumas Sheriff's Dept.	18	86%	3	14%	21	45%	20	76%	6	24%	26	55%	48
32. Riverside Sheriff's Dept.	2,483	89%	316	11%	2,799	72%	953	86%	155	14%	1,108	28%	3,907
33. Sacramento Sheriff's Dept.	2,252	94%	144	6%	2,396	58%	1,408	81%	320	19%	1,727	42%	4,123
34. San Benito Sheriff's Dept.	70	83%	14	17%	84	68%	31	79%	8	21%	40	32%	123
35. San Bernardino Sheriff's Dept.	3,791	87%	548	13%	4,339	73%	1,379	87%	199	13%	1,578	27%	5,917

Average Daily Population

Non-sentenced / Sentenced Male / Female

California County Jails - For Months Of July - September 2013

Jurisdiction	Non-sentenced			Sentenced			Total						
	Male	Female	Total	Male	Female	Total							
	#	%	#	%	#	%							
36. San Diego Sheriff's Dept.	2,700	85%	477	15%	3,177	56%	2,123	84%	402	16%	2,524	44%	5,701
37. San Diego Work Furlough	6	81%	1	19%	7	2%	229	75%	77	25%	306	98%	313
38. San Francisco Sheriff's Dept.	996	90%	113	10%	1,109	82%	219	91%	21	9%	240	18%	1,349
39. San Joaquin Sheriff's Dept.	805	88%	105	12%	910	63%	461	86%	76	14%	537	37%	1,447
40. San Luis Obispo Sheriff's Dept.	292	83%	61	17%	353	52%	274	83%	57	17%	331	48%	684
41. San Mateo Sheriff's Dept.	576	89%	70	11%	646	61%	346	83%	72	17%	418	39%	1,064
42. Santa Ana Police Dept.	308	81%	74	19%	382	100%	0	0%	0	0%	0	0%	382
43. Santa Barbara Sheriff's Dept.	624	86%	103	14%	727	71%	243	82%	52	18%	295	29%	1,022
44. Santa Clara Corrections Dept.	2,581	88%	349	12%	2,930	72%	948	82%	206	18%	1,154	28%	4,084
45. Santa Cruz Sheriff's Dept.	251	89%	32	11%	283	67%	121	87%	19	13%	139	33%	423
46. Shasta Sheriff's Dept.	206	85%	36	15%	242	74%	72	85%	13	15%	85	26%	327
47. Sierra Sheriff's Dept.	2	75%	1	25%	3	50%	2	63%	1	37%	3	50%	5
48. Siskiyou Sheriff's Dept.	68	88%	9	12%	77	77%	21	91%	2	9%	23	23%	100
49. Solano Sheriff's Dept.	550	88%	74	12%	624	68%	249	86%	41	14%	290	32%	913
50. Sonoma Sheriff's Dept.	439	85%	75	15%	515	48%	458	82%	97	18%	555	52%	1,070
51. Stanislaus Sheriff's Dept.	796	89%	103	11%	899	87%	117	87%	17	13%	135	13%	1,033
52. Sutter Sheriff's Dept.	179	87%	27	13%	207	78%	39	68%	19	32%	58	22%	265
53. Tehama Sheriff's Dept.	98	90%	11	10%	109	61%	61	88%	8	12%	69	39%	179
54. Trinity Sheriff's Dept.	24	84%	5	16%	28	54%	23	97%	1	3%	24	46%	52
55. Tulare Sheriff's Dept.	879	90%	100	10%	978	59%	550	82%	119	18%	669	41%	1,648
56. Tuolumne Sheriff's Dept.	85	76%	26	24%	111	80%	21	77%	6	23%	27	20%	138
57. Ventura Sheriff's Dept.	852	86%	136	14%	989	59%	542	80%	135	20%	676	41%	1,665
58. Ventura Work Furlough	0	0%	0	0%	0	0%	74	84%	14	16%	88	100%	88
59. Yolo Sheriff's Dept.	260	88%	34	12%	294	65%	140	90%	16	10%	156	35%	450
60. Yuba Sheriff's Dept.	304	88%	41	12%	345	84%	51	77%	15	23%	66	16%	412
Statewide	45,590	88%	6,142	12%	51,731	63%	25,747	85%	4,667	15%	30,414	37%	82,145

Jail Populations: Quarter 3, 2012 Versus Quarter 3, 2013

Jurisdiction	Qtr 3, 2012	Qtr 3, 2013	Qtr 3, 2013 Minus Qtr 3, 2012	Qtr 3, 2012 To Qtr 3, 2013 % +/-	% of Total Increase or Decrease	Cum %	Cum Total
Los Angeles Sheriff's Dept.	17,644	18,323	679	3.8%	18.5%	18.54%	679
Fresno Sheriff's Dept.	2,508	3,096	588	23.4%	16.1%	34.59%	1,267
San Diego Sheriff's Dept.	5,176	5,701	525	10.1%	14.3%	48.92%	1,792
San Bernardino Sheriff's Dept.	5,484	5,917	433	7.9%	11.8%	60.74%	2,225
Santa Clara Corrections Dept.	3,708	4,084	376	10.1%	10.3%	71.01%	2,601
Orange Sheriff's Dept.	6,598	6,835	237	3.6%	6.5%	77.48%	2,838
San Diego Work Furlough	200	312	112	56.0%	3.1%	80.54%	2,950
Merced Sheriff's Dept.	797	890	93	11.7%	2.5%	83.07%	3,043
San Joaquin Sheriff's Dept.	1,355	1,447	92	6.8%	2.5%	85.59%	3,135
San Mateo Sheriff's Dept.	982	1,065	83	8.5%	2.3%	87.85%	3,218
Alameda Sheriff's Dept.	3,389	3,451	62	1.8%	1.7%	89.54%	3,280
Ventura Sheriff's Dept.	1,603	1,665	62	3.9%	1.7%	91.24%	3,342
San Luis Obispo Sheriff's Dept.	629	684	55	8.7%	1.5%	92.74%	3,397
Shasta Sheriff's Dept.	272	327	55	20.2%	1.5%	94.24%	3,452
Lake Sheriff's Dept.	293	315	22	7.5%	0.6%	94.84%	3,474
El Dorado Sheriff's Dept.	344	366	22	6.4%	0.6%	95.44%	3,496
Placer Sheriff's Dept.	609	630	21	3.4%	0.6%	96.01%	3,517
Sonoma Sheriff's Dept.	1,050	1,070	20	1.9%	0.5%	96.56%	3,537
Yolo Sheriff's Dept.	435	450	15	3.4%	0.4%	96.97%	3,552
Santa Barbara Sheriff's Dept.	1,008	1,022	14	1.4%	0.4%	97.35%	3,566
Glenn Sheriff's Dept.	99	110	11	11.1%	0.3%	97.65%	3,577
Tulare Sheriff's Dept.	1,639	1,648	9	0.5%	0.2%	97.90%	3,586
Imperial Sheriff's Dept.	536	545	9	1.7%	0.2%	98.14%	3,595
Tuolumne Sheriff's Dept.	129	138	9	7.0%	0.2%	98.39%	3,604
Mariposa Sheriff's Dept.	37	46	9	24.3%	0.2%	98.63%	3,613
Lassen Sheriff's Dept.	115	123	8	7.0%	0.2%	98.85%	3,621
Humboldt Sheriff's Dept.	367	374	7	1.9%	0.2%	99.04%	3,628
Del Norte Sheriff's Dept.	82	89	7	8.5%	0.2%	99.24%	3,635
Kings Sheriff's Dept.	501	507	6	1.2%	0.2%	99.40%	3,641
Siskiyou Sheriff's Dept.	94	100	6	6.4%	0.2%	99.56%	3,647
Plumas Sheriff's Dept.	44	48	4	9.1%	0.1%	99.67%	3,651
Modoc Sheriff's Dept.	21	24	3	14.3%	0.1%	99.75%	3,654
Sierra Sheriff's Dept.	4	6	2	50.0%	0.1%	99.81%	3,656
Butte Sheriff's Dept.	591	593	2	0.3%	0.1%	99.86%	3,658
Napa Corrections Dept.	247	249	2	0.8%	0.1%	99.92%	3,660
Inyo Sheriff's Dept.	69	70	1	1.4%	0.0%	99.95%	3,661
Mendocino Sheriff's Dept.	263	264	1	0.4%	0.0%	99.97%	3,662
Mono Sheriff's Dept.	33	34	1	3.0%	0.0%	100.00%	3,663
Calaveras Sheriff's Dept.	71	71	0	0.0%	0.0%	100.00%	3,663
Yuba Sheriff's Dept.	414	412	-2	-0.5%	0.3%	0.27%	-2
Colusa Sheriff's Dept.	68	66	-2	-2.9%	0.3%	0.54%	-4
Ventura Work Furlough	92	88	-4	-4.3%	0.5%	1.07%	-8
Trinity Sheriff's Dept.	58	53	-5	-8.6%	0.7%	1.74%	-13
Santa Cruz Sheriff's Dept.	429	423	-6	-1.4%	0.8%	2.55%	-19
Monterey Sheriff's Dept.	1,080	1,073	-7	-0.6%	0.9%	3.49%	-26
San Benito Sheriff's Dept.	130	123	-7	-5.4%	0.9%	4.43%	-33
Sutter Sheriff's Dept.	273	265	-8	-2.9%	1.1%	5.50%	-41
Riverside Sheriff's Dept.	3,917	3,908	-9	-0.2%	1.2%	6.71%	-50
Tehama Sheriff's Dept.	194	179	-15	-7.7%	2.0%	8.72%	-65
Solano Sheriff's Dept.	931	913	-18	-1.9%	2.4%	11.14%	-83
Amador Sheriff's Dept.	107	88	-19	-17.8%	2.6%	13.69%	-102
Madera Corrections Dept.	461	442	-19	-4.1%	2.6%	16.24%	-121
Marin Sheriff's Dept.	313	288	-25	-8.0%	3.4%	19.60%	-146
Nevada Sheriff's Dept.	198	159	-39	-19.7%	5.2%	24.83%	-185
Kern Sheriff's Dept.	2,609	2,557	-52	-2.0%	7.0%	31.81%	-237
Santa Ana Police Dept.	453	382	-71	-15.7%	9.5%	41.34%	-308
Contra Costa Sheriff's Dept.	1,607	1,533	-74	-4.6%	9.9%	51.28%	-382
Sacramento Sheriff's Dept.	4,211	4,123	-88	-2.1%	11.8%	63.09%	-470
Stanislaus Sheriff's Dept.	1,154	1,033	-121	-10.5%	16.2%	79.33%	-591
San Francisco Sheriff's Dept.	1,502	1,348	-154	-10.3%	20.7%	100.00%	-745
	79,227	82,145	2,918	Note: Totals subject to slight variation due to rounding			
		Total Increase:	3,663				
		Total Decrease:	-745				

INTERPRETATION OF TABLE

Jail Populations: Third Quarter Calendar Year 2012 versus Third Quarter Calendar Year 2013 (page 7)

This table:

- summarizes the Average Daily Population (ADP) results for the 60 jurisdictions in California reporting data from Type II, III, and IV jails;
- summarizes jurisdiction ADP results for the most recent quarter (third column from left);
- compares jurisdiction ADP for the most recent quarter with the same quarter last year (second column from left);
- ranks the jurisdictions in terms of gains or losses in ADP from high to low (fourth column from left);
- lists the percentage of growth or decline in ADP for each jurisdiction (fifth column from left);
- lists the percentage of the overall state increase or decrease in ADP that is represented by each jurisdiction (sixth column from left);
- lists by jurisdiction the cumulative percentage increase and decrease in the state ADP, starting with the jurisdiction with the largest percentage of increase and proceeding to the jurisdiction with the largest percentage of decrease (seventh column from left);
- lists by jurisdiction the cumulative total increase and decrease in the state ADP, starting with the jurisdiction with the highest increase first and proceeding to the jurisdiction with the highest decrease last (eighth column from left); and,
- lists the jurisdictions that experienced decreases in their ADP as shaded.

Some important conclusions from this table are:

1. The two numbers at the bottom indicate the “Total Increase” in ADP (in this case 3,663) and “Total Decrease” in ADP (745). Specifically, the jurisdictions experiencing increases had a total increase of 3,663 ADP, and the jurisdictions experiencing decreases had a total decrease of 745 ADP. Subtracting 745 from 3,663 produces the overall increase of 2,918 between the Third Quarter of Calendar Year 2012 and the Third Quarter of Calendar Year 2013.
2. The Los Angeles Sheriff’s Department’s ADP increase of 679 is 18.5% of the total increase of 3,663. Thirty-eight jurisdictions had increases (Los Angeles Sheriff’s Department to Mono Sheriff’s Department), with one jurisdiction (Calaveras Sheriff’s Department) reporting no change. When you get to Mono Sheriff’s Department, you have accounted for 100% of the increase (100% of the cumulative total of 3,663).
3. Jurisdictions that experienced a decrease in ADP are listed from smallest decrease to largest decrease (Yuba Sheriff’s Department to San Francisco Sheriff’s Department). When you get to the bottom of the table, you have accounted for 100% of the total decrease of 745 inmates.
4. The cumulative percentage of ADP increase for the top four jurisdictions (Los Angeles Sheriff’s Department, Fresno Sheriff’s Department, San Diego Sheriff’s Department, and San Bernardino Sheriff’s Department) 60.7%. Four jurisdictions (Contra Costa Sheriff’s Department, Sacramento Sheriff’s Department, Stanislaus Sheriff’s Department, and San Francisco Sheriff’s Department) account for 58.6% of the total decrease.